

MINT **ERROR** NEWS MAGAZINE

Bringing the latest mint error news to the collector.



Spectacular Double Struck Clark Gruber \$20 Gold Piece

Clark Gr Mint Error \$20
PCGS XF45
Double struck in collar

0142.45/2175829



Excited About Mint Errors?
Join Error World Club
errorworldclub.org

18 Page
Price Guide
Inside!

Issue 10 • Summer 2005
A Mike Byers Publication



Al's Coins

Dealer in Mint Errors
and Currency Errors

alscoins.com



Specializing in Mint Errors and Currency Errors for 25 years. Visit my website to see a diverse group of type, modern mint and major currency errors. We also handle regular U.S. and World coins.



I'm a member of CONECA and the American Numismatic Association. I deal with major Mint Error Dealers and have an excellent standing with eBay. Check out my show schedule to see which major shows I will be attending. I solicit want lists and will locate the Mint Errors of your dreams.

Al's Coins

P.O. Box 147

National City, CA 91951-0147

Phone: (619) 442-3728

Fax: (619) 442-3693

e-mail: alscoins@aol.com



MINT ERROR NEWS MAGAZINE

Bringing the latest mint error news to the collector.



Issue 10 • Summer 2005

Publisher & Editor

Mike Byers

Design & Layout

Sam Rhazi

Contributing Editors

Tim Bullard

Allan Levy

Contributing Writers

Heritage Galleries & Auctioneers

Bob McLaughlin

Saul Teichman

Advertising

The ad space is sold out. Please e-mail editor@minterrornews.com to be added to the waiting list.

Subscriptions

We are not offering a paid subscription at this time. Issues of Mint Error News Magazine are mailed to our regular customers and coin dealers that we are associated with. Issues can be downloaded for free at minterrornews.com

Mint Error News is the official publication of minterrornews.com. All content Copyright 2005 Mint Error News. P.O. Box 5090, San Clemente, CA 92674. All rights reserved. No part of this magazine may be reproduced in any form without the expressed written permission of the publisher. Opinions expressed in this publication do not necessarily represent the viewpoints of Mint Error News. This publication is distributed with the understanding that the information presented herein is from various sources for which there can be no warranty or responsibility by the publisher as to accuracy, price or completeness. Mint Error News accepts unsolicited manuscripts, artwork, and photographs for publication. Direct editorial submissions to editor@minterrornews.com or P.O. Box 5090, San Clemente, CA 92674. All unsolicited material will not be returned.

PRINTED IN THE U.S.A.

Mint Error News Magazine

Issue 10 • Summer 2005

- Table of Contents -

Mike Byers' Welcome	4
Off-Center Errors	5
Off-Metal Errors	8
Clad Layer Split Off Errors	11
Philippine 1 Piso Struck Over Struck U.S. Quarter	12
1876 Indian Cent Struck on a 3¢ Nickel Planchet	13
Spectacular Double Struck Clark Gruber \$20 Gold Piece	14
Double Struck \$2 ½ Indian Sells for \$66,125 in Heritage Auction	16
Unique U.S. Territorial Gold Error	18
Rare Mint Errors From Northeast Numismatics	21
1863 Proof Seated Dime Triple Struck	22
1853 \$1 U.S. Gold Type 1 Broadstruck and Partial Collar	23
Insurance Considerations	24
Spectacular Proof Gold Mule	26
Rare Pattern Mint Errors	30
Double Struck 1838 Half Dollar Pattern	31
Mint Error News Price Guide	35
Exclusive Discounts	53
Unique Obverse Die Cap	58
Spectacular 1864 2¢ Obverse Die Cap	59
1942 Walking Liberty 50¢ On A Silver 25¢ Planchet	60
Unique 1999 SBA \$1 on an Aluminum Feeder Finger	61
Die Trial Splashes Just Discovered	62
Unique 1981 Dime Cap Overstruck on a 1981 Cent Cap	64
1861 Indian Head Cent Deep Obverse Die Cap	65
Mint Error News Museum	79
Frequently Asked Questions	83

MINT **ERROR** NEWSTM MAGAZINE

Bringing the latest mint error news to the collector.



Mike Byers, Publisher & Editor Welcomes You!

Welcome to Mint Error News Magazine, bringing the latest mint error news and information to the collector. This is our third year bringing you both a print magazine and an on-line PDF magazine filled with articles, features and discoveries of major mint errors (striking errors) from the United States and around the World. Minterrornews.com has become one of the most popular and informative Internet resources for mint errors and is read by thousands of dealers and collectors.

Two major Mint Error News sponsors are Mike Byers and ANACS. Mike Byers is the Publisher and Editor of Mint Error News Magazine.



Mike Byers (mikebyers.com) has been a Professional Numismatist since 1978. He specializes in U.S. and World errors, and is now the largest dealer of the world's rarest mint errors. His new discoveries of major mint errors has been front page news for years. Mike Byers is also a Consultant for ANACS for Mint Errors.



ANACS is one of the three major grading services. They have been authenticating, certifying and encapsulating mint errors since 1991 which is years longer than the other two grading services combined. ANACS is highly respected in the Numismatic Community and has extensive experience in authenticating mint errors.

Mike Byers is a life member of ANA since 1985, a charter member of NGC and a featured dealer/member of PCGS. He is also a founder member of the California Coin & Precious Metals Association and a life member of the Central States Numismatic Society.

Two other sponsors to minterrornews.com are Tim Bullard (errorcointrader.com) and Allan Levy (alsocoins.com). Because of their combined experience and insight of the error coin market, they will bring valuable news and information to minterrornews.com.

Additional sponsors are CoinLink, CoinFacts.com, errorworldclub.org, Eureka Trading, uspatterns.com, Northeast Numismatics, Robert L. Astrich and The Software Clinic. We encourage collectors and dealers to submit articles and photos of major mint errors that we may feature on the website.

Off-Center Errors

by Al Levy (alscoins.com)

Here are records of recent sales of off-center mint errors on eBay:

1. All coins were listed on eBay and closed from October 1, 2004 to December 31, 2004.
2. All lots had buyers. If the coins actually changed hands is unknown.
3. A picture accompanied each lot or it was not recognized.
4. Mislabeled items were ignored.
5. Some lots may have changed hands more than once.

6. "D" next to the date symbolizes that the coin had damage or was scratched.
7. "C" next to the date symbolizes that the coin was cleaned.
8. "B" next to the date symbolizes that the coin had damage and was cleaned.
9. If the date or mint mark was missing or partially visible, parentheses were used.
10. Postage/handling/insurance fees were ignored.
11. Major auctions were not listed.

DENOM	YEAR	NOTES	GRADE	LESS:11%	11%-35%	36%-75%	OVER 75%
1c	1798	D	ANACS NET 3	\$ 128.06			
1c	1818	D	UGLY	\$ 32.99			
1c	(1817)	D	AG		\$ 103.52		
1c	(1834)		VG	\$ 180.75			
1c	189(0)		GOOD	\$ 49.95			
1c	1897		VG		\$ 168.00		
1c	1897		FINE	\$ 78.51			
1c	1897	D	VF		\$ 77.77		
1c	1899	D	GOOD	\$ 31.00			
1c	1900		GOOD	\$ 99.00			
1c	1901	D	FINE	\$ 66.25			
1c	1902	C	UNC	\$ 123.51			
1c	1903		ANACS 12	\$ 113.50			
1c	?(903)		GOOD	\$ 85.00	\$ 100.00		
1c	1904		ANACS 12	\$ 51.06			
1c	190(?)		XF			\$ 218.75	
1c	1908		NGC 58 BRN	\$ 185.50			
1c	1916-S	D	VF		\$ 79.99		
1c	1917-D		VG		\$ 109.50		
1c	1917-D	C	XF	\$ 97.00			
1c	1917-S		VG		\$ 90.00		
1c	1917-S		XF	\$ 100.95			
1c	1919-S		PCGS 63 BRN	\$ 249.99			
1c	1920		VF	\$ 108.75			
1c	1920		PCGS 50	\$ 113.50			
1c	1920		ANACS 64 BRN	\$ 249.50			
1c	1929-D	B	UNC	\$ 119.50			
1c	1929-D		BU	\$ 133.50			
1c	1929-S		XF	\$ 67.10			
1c	1930-D		XF	\$ 46.55			
1c	1930-D	D	UNC BRN		\$ 51.01		
1c	1935		GEM BU RED	\$ 76.56			
1c	1935		NGC 62 BRN	\$ 62.00			
1c	1936		AU		\$ 49.99		
1c	1937	D	UNC BRN		\$ 56.99		
1c	1937		ANACS 63 BRN	\$ 49.67			
1c	1939	C	CH BU		\$ 65.00		
1c	1942	C	VF	\$ 26.01			
1c	1942		AU		\$ 41.00		
1c	1943		XF	\$ 34.39			
1c	1943-D		AU	\$ 46.00			
1c	1944	D	XF		\$ 20.49		
1c	1944		CH BU R&B	\$ 18.61			
1c	1944		ANACS 64 R&B		\$ 77.00		
1c	1944-S	B	AU		\$ 35.95		
1c	1944-S		UNC R&B		\$ 59.00		
1c	19(45)	B	BU			\$ 75.00	
1c	1945-S		AU	\$ 45.21			

DENOM	YEAR	NOTES	GRADE	LESS:11%	11%-35%	36%-75%	OVER 75%
1c	1946-S	B	UNC	\$ 36.04			
1c	1946-S		AU		\$ 39.00		
1c	1947-S		XF	\$ 59.00			
1c	194(?)		CH BU RED		\$ 38.37		
1c	194(?)		GEM BU R&B		\$ 29.95		
1c	1952-D	B	AU			\$ 33.55	
1c	1952-D		UNC BRN			\$ 37.01	
1c	1956-D		UNC BRN			\$ 58.49	
1c	1957-D		UNC BRN				\$ 109.49
1c	1957-D		UNC RED			\$ 63.50	
1c	1958-D		UNC R&B				\$ 31.51
1c	1958-D		NGC 65 RED			\$ 109.50	
1c	1960-D LD		CH BU BRN				\$ 73.56
1c	196(0)-D LD		BU RED		\$ 63.00		
1c	1961-D		BU R&B			\$ 39.99	
1c	196(2)	D	XF		\$ 6.50		
1c	1963-D	D	XF				\$ 23.35
1c	1963-D		UNC BRN			\$ 44.00	
1c	196(4)		BU R&B		\$ 5.50		
1c	1964-D		AU				\$ 18.59
1c	1965		AU	\$ 7.49			
1c	1965		BU R&B				\$ 31.00
1c	1966	D	BU R&C			\$ 11.61	
1c	(?967)		GEM BU RED			\$ 5.55	
1c	1968-D		XF	\$ 9.38			
1c	1968-D	C	AU			\$ 11.59	
1c	1968-D		UNC BRN			\$ 16.00	
1c	1968-D		UNC R&B			\$ 10.50	
1c	1968-D		ANACS 64 BRN			\$ 35.00	
1c	1968-S		CH BU R&B		\$ 47.25		
1c	1969-D		AU			\$ 18.93	
1c	1969-D		UNC R&B			\$ 18.25	
1c	1969-D		CH BU R&B			\$ 21.50	
1c	1969-D		NGC 64 R&B				\$ 43.89
1c	196(?)		UNC BRN		\$ 5.51		
1c	196(?)		BU R&B			\$ 17.50	
1c	1970-D		AU			\$ 12.60	
1c	1970-D		BU R&B				\$ 20.55
1c	1970-S LD		BU BRN				\$ 105.60
1c	(19)70-(?)		NGC 66 BRN			\$ 25.01	
1c	1970-(?)		AU			\$ 6.49	
1c	1971		BU RED		\$ 9.95		
1c	1971-(?)		AU			\$ 7.00	
1c	1971-D		BU R&B			\$ 26.65	
1c	1972		UNC BRN	\$ 10.01			
1c	1972-D		AU			\$ 15.76	
1c	1972-D		CH BU R&B	\$ 18.50		\$ 15.50	\$ 14.38
1c	1972-D		ANACS 58		\$ 13.49		

DENOM	YEAR	NOTES	GRADE	LESS:11%	11%-35%	36%-75%	OVER 75%
1c	1973		CH BU BRN				\$ 59.77
1c	1973-D		UNC BRN			\$ 15.50	
1c	1973-D		CH BU BRN			\$ 17.34	
1c	(?9)73-(?)		UNC BRN				\$ 7.52
1c	1974-D		AU			\$ 7.49	
1c	1974-D		UNC R&B				\$ 26.01
1c	(1974)-(?)		CH BU R&B			\$ 8.00	
1c	1975		AU		\$ 5.60		
1c	1975-D	C	BU			\$ 12.50	
1c	1975-D		CH BU R&B		\$ 9.50		
1c	1979-D		UNC BRN			\$ 8.25	
1c	1980		UNC BRN		\$ 7.53		
1c	1980		BU BRN			\$ 16.38	
1c	1980		BU R&B			\$ 9.50	
1c	198(0)		BU R&B	\$ 4.25			
1c	(19)80-(?)		AU			\$ 7.16	
1c	1980-D	D	ANACS NET 55				\$ 17.27
1c	1981		UNC BRN	\$ 6.51			
1c	1981		GEM BU RED	\$ 6.05			
1c	1981-D	C	AU			\$ 36.49	
1c	1982 LD CU		BU R&B			\$ 9.51	
1c	19(82)-(?) LD CU		BU R&B			\$ 8.49	
1c	198(3)-(?)		UNC BRN			\$ 4.99	
1c	1983		UNC BRN			\$ 3.10	
1c	1983		UNC RED	\$ 4.99	\$ 6.24		
1c	1983	D	BU RED			\$ 0.99	
1c	1983	D	BU R&B		\$ 7.50		
1c	1983		BU R&B	\$ 7.25	\$ 15.50		
1c	1983		BU RED	\$ 6.73	\$ 6.21		
1c	1983		CH BU BRN	\$ 5.98			
1c	1983		CH BU R&B	\$ 6.88			
1c	198(3)		UNC RED			\$ 8.59	
1c	1983-D		BU RED			\$ 12.13	
1c	1983-(?)		BU RED			\$ 9.50	
1c	1984		AU			\$ 2.99	
1c	(1984)		UNC RED			\$ 4.99	
1c	1984	D	UNC BRN				\$ 4.49
1c	1984		UNC RED			\$ 4.99	
1c	1984		BU RED	\$ 3.40	\$ 6.30		
1c	1984		CH BU RED			\$ 5.02	
1c	1984		GEM BU RED	\$ 5.00	\$ 12.99		
1c	1984-(?)		BU R&B			\$ 4.26	
1c	1985	D	UNC RED		\$ 4.75		
1c	1985		UNC RED	\$ 4.99	\$ 4.99	\$ 5.74	
1c	1985		BU R&B	\$ 4.88		\$ 5.24	
1c	1985		BU RED	\$ 6.00	\$ 5.98	\$ 8.75	
1c	1985		CH BU R&B	\$ 12.99			
1c	1985		CH BU RED			\$ 3.25	
1c	1985		GEM BU RED			\$ 12.99	
1c	198(5)		UNC RED				\$ 9.50
1c	1985-(?)		UNC R&B			\$ 6.50	
1c	(1985)-(?)	D	UNC R&B				\$ 10.35
1c	1986	D	UNC R&B			\$ 9.27	
1c	1986		BU R&B	\$ 3.25		\$ 5.24	
1c	198(6)		BU R&B		\$ 5.50		
1c	1987		UNC R&B			\$ 4.99	
1c	1987	D	CH BU RED			\$ 9.85	
1c	1987-D		UNC BRN			\$ 5.74	
1c	1987-D		UNC R&B			\$ 8.35	
1c	1987-(?)		BU RED			\$ 5.77	
1c	1988		UNC R&B	\$ 2.50	\$ 0.99		
1c	1988		UNC RED	\$ 1.00			
1c	1988		BU RED		\$ 9.10		
1c	1988-D		BU BRN			\$ 10.51	
1c	1989		UNC BRN			\$ 1.99	
1c	1989		UNC RED			\$ 1.25	
1c	1989		GEM BU RED		\$ 10.89		
1c	1989-(D)		BU RED			\$ 15.56	
1c	198(?)		NGC 65 R&B			\$ 2.75	
1c	1990		BU RED	\$ 4.75		\$ 4.75	
1c	1990		CH BU RED		\$ 5.95		
1c	1990-D		BU R&B			\$ 11.86	
1c	199(0)-D		BU RED			\$ 7.77	
1c	1991		UNC RED	\$ 3.00		\$ 4.99	
1c	199(1)		BU RED		\$ 6.73		
1c	1992-D		AU				\$ 12.60
1c	1993		UNC RED			\$ 8.49	
1c	1994		BU R&B		\$ 9.35		
1c	1995		BU BRN	\$ 8.00			
1c	1995		BU RED			\$ 11.58	
1c	1995		GEM BU RED	\$ 5.50			
1c	1996		BU RED			\$ 11.50	
1c	1996		CH BU RED			\$ 14.02	
1c	1996-D		GEM BU RED			\$ 20.00	
1c	1997	D	CH BU RED			\$ 11.01	

DENOM	YEAR	NOTES	GRADE	LESS:11%	11%-35%	36%-75%	OVER 75%
1c	1997		GEM BU RED	\$ 3.99			
1c	1997-D		GEM BU RED			\$ 15.45	
1c	1998		ANACS 65 RED		\$ 11.50		
1c	1999		ANACS 62 RED			\$ 9.99	
1c	1999		ANACS 65 RED	\$ 27.50	\$ 17.25		
1c	2000		PCGS 64 RED		\$ 28.00		
1c	2001-D		GEM BU RED	\$ 8.89			
1c	2003		GEM BU RED	\$ 11.78			
1c	2003-D		GEM BU RED		\$ 177.50		
1c	2004		GEM BU RED	\$ 35.17			
3c	(1865)		NGC 25		\$ 230.75		
3c	1865		ANACS 40		\$ 525.00		
3c	1865		PCGS 10	\$ 300.00			
5c	1920	D	VF	\$ 103.50			
5c	(?)20		NGC 58		\$ 419.44		
5c	1935		ANACS 50	\$ 173.60			
5c	1939		BU		\$ 169.16		
5c	19(57)-D		GEM BU FFS			\$ 50.00	
5c	(?)976		CH BU			\$ 16.00	
5c	1974		UNC		\$ 23.49		
5c	1974		BU	\$ 4.90			
5c	(1974)-D		UNC		\$ 15.06		
5c	(1977)		ANACS 63		\$ 24.14		
5c	1979		BU		\$ 22.27		
5c	1980-P	D	UNC		\$ 12.25		
5c	1980-P		BU		\$ 12.88		
5c	1980-P		NGC 65 5FS	\$ 28.52			
5c	(?)82-P		UNC		\$ 15.56		
5c	1983-P		UNC		\$ 13.75		
5c	1983-P		BU		\$ 25.00		
5c	(1)983-P		BU		\$ 10.50		
5c	(1983)-P		BU		\$ 13.03		
5c	(?)84-D		GEM BU		\$ 21.27		
5c	1984-P		BU		\$ 15.67		
5c	1984-P		GEM BU		\$ 14.00		
5c	(1)984-P		UNC		\$ 14.50		
5c	1986-P		BU		\$ 19.38		
5c	1988-P		GEM BU	\$ 7.16	\$ 14.17		
5c	(1)988-P		GEM BU		\$ 12.00		
5c	(?)88-P		GEM BU			\$ 8.27	
5c	(?)88-P		GEM BU		\$ 14.61		
5c	1988-(?)		GEM BU		\$ 10.00		
5c	(?)89-P		GEM BU		\$ 13.00		
5c	(?)89-P		GEM BU			\$ 13.00	
5c	1989-P		GEM BU		\$ 13.68		
5c	1989-P		NGC 66 5FS	\$ 13.15			
5c	(1989)-P		NGC 64 6FS		\$ 25.15		
5c	(1989)-P		NGC 65 5FS	\$ 40.00			
5c	(?)989-P		GEM BU		\$ 11.50		
5c	1994.P		GEM BU	\$ 10.99			
5c	1995.P		BU		\$ 16.05		
5c	1995.P		CH BU		\$ 35.04		
5c	(?)95-P		UNC		\$ 12.99		
5c	(?)96-P		NGC 65		\$ 17.01		
5c	(?)96-P		NGC 65		\$ 14.99		
5c	1998-P		BU		\$ 12.27		
5c	1998-P		GEM BU	\$ 5.75	\$ 8.51		
5c	(1998)-(P)		GEM BU	\$ 7.00			
5c	(?)999-D		GEM BU		\$ 20.50		
5c	19(99)-D		BU		\$ 12.76		
5c	(?)99-D		ANACS 65		\$ 15.00		
5c	1999-P		BU		\$ 15.16		
5c	1999-P		GEM BU	\$ 6.00	\$ 7.61	\$ 20.00	
5c	1999-P		ANACS 64		\$ 18.00		
5c	19(99)-P		GEM BU	\$ 7.99			
5c	(1999)-(P)		GEM BU		\$ 7.00		
5c	2000-D		GEM BU		\$ 14.50	\$ 12.50	
5c	(?)00-D		GEM BU		\$ 9.99		
5c	(?)00-D		ANACS 64		\$ 16.50		
5c	(?)00-D		NGC 64		\$ 26.00		
5c	2000-P		GEM BU		\$ 12.00		
5c	(2)000-P		GEM BU		\$ 10.50		
5c	2001-D		GEM BU		\$ 22.84		
5c	2001-P		GEM BU		\$ 20.50		
5c	(2004)-(P) PM		UNC	\$ 579.00			
10c	1935	C	XF	\$ 125.00			
10c	1944		UNC	\$ 76.11			
10c	1944		ANACS 62	\$ 125.00			
10c	1964	D	BU		\$ 49.90		
10c	1966		BU		\$ 27.23	\$ 24.60	
10c	1970-D		UNC		\$ 23.27		
10c	1970-D		BU		\$ 20.25		
10c	197(5)-D		BU		\$ 19.38		
10c	1979	D	BU	\$ 7.16			
10c	197(?)		BU	\$ 4.57			

DENOM	YEAR	NOTES	GRADE	LESS:11%	11%-35%	36%-75%	OVER 75%
10c	1980-P		UNC	\$ 9.99		\$ 9.99	
10c	1989-P		UNC			\$ 17.59	
10c	1990-D		BU			\$ 14.06	
10c	1990-P		BU			\$ 8.00	
10c	1996-P		BU		\$ 9.00		
10c	1996-P		GEM BU			\$ 14.79	
10c	1997-P	D	BU			\$ 10.00	
10c	1997-P		GEM BU		\$ 6.34		
10c	1997-P		NGC 65		\$ 16.50		
10c	1998-P		BU		\$ 8.50		
10c	1998-P		GEM BU	\$ 3.36		\$ 15.55	\$ 10.50
10c	1998-P		NGC 65			\$ 16.50	
10c	1999-P		BU		\$ 9.52		
10c	1999-P		GEM BU		\$ 6.50		
10c	2000-P		NGC 65			\$ 16.55	
25c	1965		XF	\$ 9.99			
25c	1965		BU	\$ 6.15			
25c	(1965)		BU	\$ 8.26			
25c	1973		BU		\$ 26.42		
25c	(1973)		BU	\$ 6.50			
25c	(1977)-(?)		BU		\$ 16.50		
25c	1974		NGC 62	\$ 21.50			
25c	1976		NGC 63	\$ 43.50			
25c	1976		PCGS 66		\$ 94.00		
25c	(1976)		BU	\$ 26.55	\$ 34.88		
25c	1977		ICS BU	\$ 13.60			
25c	1977		NGC 61	\$ 19.50			
25c	1978		ANACS 63	\$ 19.00			
25c	1979		UNC		\$ 22.50		
25c	1979		NGC 64		\$ 47.99		
25c	(1980)-P		PCGS 64	\$ 58.01			
25c	1981-P	D	BU	\$ 18.27			
25c	1981-P		BU				\$ 60.00
25c	198(2)-P		CH BU	\$ 36.00			
25c	1983-P		AU		\$ 24.01		
25c	1983-P		UNC	\$ 22.28	\$ 25.80	\$ 61.00	
25c	1983-P		CH BU	\$ 10.59	\$ 29.22	\$ 59.49	
25c	1983-P		GEM BU	\$ 14.50		\$ 64.10	
25c	1983-P		ANACS 63		\$ 52.53		
25c	1983-P		NGC 63	\$ 36.00			
25c	1983-P		NGC 65	\$ 102.50			
25c	1983-P		PCGS 64		\$ 45.00		
25c	1983-P	D	PCI 55	\$ 9.99			
25c	(19)83-P		AU		\$ 25.50		
25c	1983-(?)		CH BU			\$ 52.55	
25c	1984-P		XF	\$ 4.25			
25c	1984-P		AU		\$ 20.00		
25c	1984-P		UNC		\$ 26.00		
25c	1984-P		BU		\$ 15.51		
25c	1984-P		CH BU	\$ 16.49			
25c	(19)84-P		BU	\$ 18.27			
25c	1985-P		XF		\$ 10.00		
25c	1985-P		GEM BU		\$ 41.78		
25c	(1985)-P		BU	\$ 15.75			
25c	1987-P		AU		\$ 11.55		
25c	1989-P	D	AU		\$ 4.00		
25c	1989-P		AU	\$ 14.51			
25c	1989-P		UNC	\$ 15.51	\$ 27.33		
25c	1989-P		CH BU		\$ 60.55		
25c	(1993)-P		CH BU	\$ 14.49			
25c	1993-(?)		UNC			\$ 52.00	
25c	1994-P		CH BU	\$ 15.53			
25c	1995-D		CH BU	\$ 16.99			
25c	1995-D		NGC 62	\$ 15.00			
25c	1995-P		UNC	\$ 7.77	\$ 30.25		
25c	1995-P		GEM BU	\$ 13.50			
25c	199(5)-(?)		GEM BU				\$ 40.95
25c	(1)996-D		GEM BU			\$ 59.95	
25c	1996-P		UNC		\$ 20.51		
25c	1996-P		CH BU	\$ 19.50			
25c	(1997)-D		GEM BU	\$ 28.05			
25c	1998-D		GEM BU	\$ 16.42			
25c	1998-D		ANACS 58	\$ 13.01			
25c	1998-P		GEM BU	\$ 15.53			
25c	1998-(?)		NGC 67				\$ 66.01
25c	PA		GEM BU			\$ 103.51	
25c	PA		NGC 65			\$ 224.99	
25c	PA		NGC 67				\$ 160.27
25c	PA (?) -D		GEM BU			\$ 152.50	
25c	PA (?) -D		NGC 65			\$ 260.00	
25c	NJ 1999-P		ICG 64	\$ 36.00			
25c	GA 1999-D		UNC	\$ 35.17			
25c	GA 1999-D		GEM BU	\$ 33.77			
25c	GA 1999-P		AU		\$ 50.02		
25c	GA 199(9)-P	D	UNC		\$ 96.00		

DENOM	YEAR	NOTES	GRADE	LESS:11%	11%-35%	36%-75%	OVER 75%
25c	GA (?) -P		BU		\$ 78.93		
25c	GA		GEM BU				\$ 123.30
25c	GA		PCGS 64				\$ 174.99
25c	GA		PCGS 67				\$ 185.91
25c	GA		NGC 66			\$ 134.50	
25c	CT 1999-D		BU	\$ 39.55			
25c	CT 1999-D		GEM BU		\$ 49.95		
25c	CT 1999-D		ANACS 61	\$ 49.00			
25c	CT 1999-P		UNC	\$ 13.05			
25c	CT		GEM BU				\$ 75.00
25c	MA 2000-P		UNC		\$ 86.99		
25c	MA 2000-(?)		BU			\$ 381.00	
25c	NH 2000-D		BU	\$ 31.99			
25c	NH 2000-P		BU	\$ 61.00	\$ 37.75		
25c	NH 2000-P		ANACS 63	\$ 20.00			
25c	NH 2000-P		ANACS 64	\$ 32.89			
25c	NH 2000-P		PCGS 63		\$ 67.86		
25c	NH (2007)- P		BU	\$ 83.00			
25c	NH - P		BU	\$ 99.99			
25c	NH - P		PCGS 64				\$ 99.99
25c	MD 2000-D		BU	\$ 61.57			
25c	MD 2000-P		BU	\$ 50.00			
25c	VA 2000-P		ICG 66	\$ 49.26			
25c	VA 2000-P		NGC 67		\$ 167.50		
25c	VA 2000		BU	\$ 36.05			
25c	SC 2000-P		BU	\$ 32.00	\$ 75.00		
25c	NC 2001-P	D	UNC	\$ 12.84			
25c	NC 2001-P		BU	\$ 27.00			
25c	NC 2001-P		CH BU	\$ 36.19			
25c	NC 2001-P		NGC 66	\$ 57.99			
25c	AL 2003-P		NTC 66	\$ 31.89			
50c	1971-D		CH BU			\$ 430.00	
50c	1976	D	AU	\$ 42.17			
50c	1976		UNC	\$ 92.53			
50c	1976		BU	\$ 127.51			
50c	1979		BU	\$ 110.00			
50c	(1983)-P		AU	\$ 104.50			
50c	1983-P		UNC	\$ 77.00			
50c	1983-P		BU		\$ 305.00		
50c	1989-P		GEM BU	\$ 152.38			
50c	1989-P		NGC 63	\$ 133.50			
50c	(1990)-P		NGC 65	\$ 113.50			
1\$	1883-O		PCGS 25	\$2,460.00			
1\$	1978		XF		\$ 138.01		
1\$	1978		UNC	\$ 93.88			
1\$	1978		ANACS 62	\$ 191.50			
1\$	1978		PCGS 62	\$ 175.00			
1\$	(1)978-D		BU	\$ 153.50			
1\$	1979-P		BU	\$ 102.57			
1\$	1979-P		CH BU		\$ 125.00		
1\$	1979-P		ANACS 64		\$ 238.49		
1\$	1999-P		BU		\$ 137.83		
1\$	1999-P		CH BU		\$ 190.76		
1\$	1999-P		PCGS 65		\$ 282.00		
1\$	1999-(?)		CH BU			\$ 415.00	
1c	ND IHC		AU		\$ 224.50		
1c	ND WHEAT	C	UNC			\$ 13.35	
1c	ND WHEAT		BU RED				\$ 13.49
1c	ND WHEAT		ANACS 64 BRN			\$ 53.00	
1c	ND WHEAT		ANACS 64 RED			\$ 38.79	
1c	ND ZINC		ANACS NET 50			\$ 7.49	
1c	ND ZINC		ANACS 63 RED				\$ 7.62
1c	ND ZINC		ANACS 64 BRN				\$ 14.11
1c	ND ZINC		ANACS 64 RED		\$ 20.00		
1c	ND ZINC		NGC 64 RED		\$ 10.50		
1c	ND ZINC		ICG 65 RED		\$ 8.00		
5c	ND LIBERTY		ANACS 30			\$ 393.00	
5c	ND CLAD		ANACS 62				\$ 14.11
10c	ND SILVER		UNC		\$ 72.00		
10c	ND SILVER		CH BU				\$ 21.50
10c	ND CLAD	D	ANACS NET 50		\$ 10.45		
10c	ND CLAD		ANACS 62				\$ 14.11
10c	ND CLAD		NGC 65				\$ 10.50
10c	ND CLAD		SGS 63		\$ 7.49		
25c	ND SILVER		PCGS 63				\$ 68.00
25c	ND CLAD		XF		\$ 28.07		
25c	ND CLAD		UNC	\$ 18.60	\$ 28.56		\$ 36.00
25c	ND CLAD		CH BU		\$ 34.00		
25c	ND CLAD		GEM BU		\$ 34.01		\$ 18.05
25c	ND CLAD		ANACS 62	\$ 24.74			
25c	ND CLAD		NGC 64		\$ 62.00		
25c	ND CLAD		NGC 66		\$ 54.00		
25c	ND CLAD		PCGS 62		\$ 63.49		
25c	ND STATE	D	BU				\$ 45.99
25c	ND STATE		PCGS 65				\$ 50.00

Off-Metal Errors

by Al Levy (alscoins.com)

1. ALL LOTS HAD BUYERS. IF THE COINS ACTUALLY CHANGED HANDS IS UNKNOWN.
2. A PICTURE ACCOMPANIED EACH LOT OR IT WAS NOT RECOGNIZED.
3. BLURRY PICTURES OR OTHER PROBLEMS ARE NOTATED UNDER "OBSERVATION".
4. ITEMS MISLABELLED COMMANDED A SMALL PREMIUM.
5. SOME LOTS CHANGED HANDS MORE THAN ONCE.
6. ANY SCRATCHES, DENTS OR DEFECTS NOTATED WERE EITHER IN THE DESCRIPTION OR GRADING SERVICES' HOLDERS.
7. AUCTION HOUSES THAT LISTED THESE ERRORS WERE IGNORED.
8. SHIPPING CHARGES ARE NOT INCLUDED.

FROM 10/01/04 TO 12/31/04			
DOUBLE DENOMINATIONS			
<u>DESCRIPTION</u>	<u>GRADE</u>	<u>SOLD</u>	<u>OBSERVATION</u>
1c STRUCK ON A STRUCK 10c DUAL DATE	PCGS 66	\$ 3,950.00	1999 1c STRUCK ON A STRUCK 1997 10c (NICE TWO YEAR EXAMPLE)
1c STRUCK ON STRUCK 10c 1997-P	ANACS 64	\$ 750.00	TWO FULL DATES & MINTMARK. 2ND STRIKE 180 DEGREE TURN.
1c STRUCK ON STRUCK 10c 2000-P	NGC 66	\$ 710.00	TWO FULL DATES & MINTMARK. "FLIPOVER"
1c STRUCK ON STRUCK 10c NO DATE	ANACS 64	\$ 555.00	199 OF DATE ALL THAT REMAINS OF CENT STRIKE.
5c STRUCK ON A STRUCK 1c 1980-P	BU BRN	\$ 560.00	FULL DATE & MINTMARK OF NICKEL STRIKE.
5c STRUCK ON STRUCK 1c 2000-D	PCGS 65 RED	\$ 1,850.00	TWO FULL DATES & TWO FULL MINTMARKS. LOTS OF DETAIL ALL STRIKES.
OFF METALS			
1c/10c 1959	BU	\$ 450.00	LOTS OF OBTVERSE SCRATCHES. FULL DATE & MINTMARK AREA.
1c/10c 1964-D	GEM BU	\$ 860.00	NO WEIGH GIVEN. LOOKS TO BE FULL STRIKE. MAY BE PLATED. CANNOT TELL!!!
1c/10c 1965	NGC 66	\$ 475.00	HOLDER STATES STRUCK ON A TYPE I PLANCHET. 2.2 GRAMS
1c/10c 1967	BU	\$ 216.60	FULL DATE & MINTMARK AREA
1c/10c 1967	ANACS NET 60	\$ 207.51	ANACS UNC, NET 60 (CLEANED)
1c/10c 1968	XF	\$ 150.00	FULL DATE & MINTMARK AREA. THE COIN LOOKED "COPPER" COLORED ON THE SCAN BUT WAS DESCRIBED PROPERLY.
1c/10c 1981	ANACS NET 60	\$ 227.50	CLEANED
1c/10c 1999	ANACS NET 40	\$ 113.60	ANACS UNC, NET 40. COIN LOOKS LIKE A SOLIT OFF ERROR. LOTS OF DAMAGE.
1c/10c 1999	PCGS 65	\$ 385.00	FULL DATE & MINTMARK AREA
1c/10c 1999-D	ANACS 65	\$ 324.99	FULL DATE & MINTMARK AREA. NICE!
5c/1c 1956-D	AU	\$ 456.97	FULL DATE & MINTMARK. REVERSE "PLANCHET FLAWS"
5c/1c 1964	ANACS 55	\$ 202.50	FULL DATE.

<u>DESCRIPTION</u>	<u>GRADE</u>	<u>SOLD</u>	<u>OBSERVATION</u>
5c/1c 1964-D	AU	\$ 217.50	FULL DATE & MINTMARK. SOME WEAR. FINGERPRINT REVERSE.
5c/1c 1977	BU RED	\$ 255.01	3.09 GRAMS. MOST OF DATE.
5c/1c 1978	ANACS 55	\$ 157.51	MOST OF DATE SHOWS, ALL OF MINTMARK AREA (R&B)
5c/1c 1978	NGC 64 R&B	\$ 247.50	FULL DATE & MINTMARK. TYPE I PLANCHET NOTATED ON HOLDER.
5c/1c (1978)	GEM BU RED	\$ 355.56	PARTIAL DATE. NICE LUSTER!
5c/1c 1979	NGC 55 BRN	\$ 213.50	FULL DATE & MINTMARK AREA
5c/1c 1979	NGC 63 R&B	\$ 209.49	FULL DATE & MINTMARK. TYPE I PLANCHET NOTATED ON HOLDER.
5c/1c 1980-D	NGC 64 BRN	\$ 255.01	3.08 GRAMS. LOOKED LIKE A PARTIAL DATE. PICTURE FUZZY
5c/1c 1980-P	BU RED	\$ 149.95	MOST OF DATE SHOWS, ALL OF MINTMARK AREA.
5c/1c 1980-P	CH BU R&B	\$ 180.00	ALMOST A FULL DATE. COMPLETE MINTMARK. COUNTING ROOM DAMAGE.
5c/1c 1980-P	ANACS NET 55	\$ 152.50	COUNTING WHEEL DAMAGE. ALMOST A FULL DATE. BROWN COLOR.
5c/1c 1980-P	ANACS 60 R&B	\$ 199.00	∩ DATE & MINTMARK
5c/1c 1980-P	NGC 64 R&B	\$ 211.51	FULL DATE & MINTMARK. TYPE I PLANCHET NOTATED ON HOLDER.
5c/1c 1980-P	PCGS 62 R&B	\$ 222.50	FULL DATE & MINTMARK
5c/1c 1980-P	PCGS 63 RED	\$ 280.00	ALMOST A FULL DATE. COMPLETE MINTMARK. NICE COLOR!
5c/1c 1980-P	PCGS 64 RED	\$ 270.00	MOST OF DATE. ALL OF MINTMARK.
5c/1c (19)80-P	UNC R&B	\$ 154.50	MOST OF DATE. FULL MINTMARK
5c/1c (1980)-P	BU RED	\$ 172.50	PARTIAL DATE, FULL MINTMARK. NICE RED COLOR.
5c/1c (1980)-P	CH BU RED	\$ 177.50	TINY PART OF DATE. COMPLETE MINTMARK.
5c/1c (1980)-P	ICG 63 BRN	\$ 157.60	3/4 OF DATE REMAINS.
5c/1c (1980)-P	ICS	\$ 102.50	BROWN UNC(?). NO GRADING BY INDIVIDUAL OR HOLDER.
5c/1c (1980)-P	PCGS 63 BRN	\$ 181.50	PARTIAL DATE, FULL MINTMARK
5c/1c (1980)-(P)	PCGS 63 R&B	\$ 250.35	∩ OF DATE & MINTMARK.
5c/1c (1980)-P	PCGS 63 RED	\$ 227.50	NICE COLOR. ∩ OF DATE & MINTMARK.
5c/1c 1981-P	BU R&B	\$ 179.99	DAMAGED AROUND RIM & AT DATE.
5c/1c 1981-P	BU R&B	\$ 183.50	FULL DATE & MINTMARK
5c/1c 1981-P	GEM BU R&B	\$ 213.63	RED & BROWN. FULL DATE & MINTMARK.
5c/1c 1981-P	ANACS 63 BRN	\$ 211.17	PARTIAL DATE, FULL MINTMARK. NICE BROWN COLOR W/ SOME RED REMAINING..
5c/1c NO DATE	UNC	\$ 154.00	CLAIMS TO BE 1981, LITTLE OR NO DATE. LOOKS DIPPED.
5c/1c NO DATE	BU R&B	\$ 100.01	3.12 GRAMS. LOOKS LIKE A 1980-P
5c/1c NO DATE	NGC 64 RED	\$ 425.00	"10% OFF CENTER". NO DATE OR MINTMARK.
5c/1c NO DATE	PCGS 62 BRN	\$ 151.01	DAMAGED. NOT LISTED ON HOLDER,.
5c/10c NO DATE "SILVER"	AU	\$ 172.50	REVERSE DAMAGE AT RIM. NO DATE OR MINTMARK.
5c/SILVER 10c NO DATE	ANACS 60	\$ 355.18	NO DATE.
5c/10c (1969-S)	PCGS 63	\$ 521.10	50% OF DATE & MINTMARK. OWNER DESCRIBED AS "PROOF" PLANCHET (NOT ON HOLDER). DIDN'T LOOK IT.
5c/10c NO DATE CLAD	XF	\$ 200.65	NO DATE OR MINTMARK. LOOKED DAMAGED. 2.28 GRAMS.
5c/10c NO DATE CLAD	ANACS 63	\$ 178.50	NO DATE OR MINTMARK.
5c/10c NO DATE CLAD	ANACS 63	\$ 255.00	NO DATE. HORRIBLE PICTURE.

<u>DESCRIPTION</u>	<u>GRADE</u>	<u>SOLD</u>	<u>OBSERVATION</u>
5c/10c NO DATE CLAD	ANACS 63	\$ 279.95	NO DATE. POSSIBLY A MINTMARK, BUT PICTURE WAS TOO BLURRY TO TELL.
25c/1c (1973)-D	PCGS 63	\$ 860.00	50% OF DATE REMAINS. BROWN COLOR
25c/1c NO DATE	NGC 63 BRN	\$ 455.00	WEIGHS 3.02 GRAMS
25c/5c 1964	GEM BU	\$ 405.00	MOST OF DATE REMAINS. FULL MINTMARK AREA
25c/5c 1965	AU	\$ 152.51	FULL DATE & MINTMARK AREA
25c/5c 1966	CH BU	\$ 283.00	FULL DATE & MINTMARK AREA
25c/5c 1966	ANACS 40	\$ 119.16	FULL DATE & MINTMARK AREA
25c/5c 1967	CH BU	\$ 200.00	FULL DATE & MINTMARK AREA
25c/5c 1970	ACID THIN	\$ 42.53	3.47 GRAMS. (NOT AN ERROR)
25c/5c 1971-D	UNC	\$ 130.50	FULL DATE & MINTMARK
25c/5c 1972-D	XF	\$ 91.00	FULL DATE & MINTMARK. REVERSE DISCOLORATION.
25c/5c 1972-D	ANACS 64	\$ 202.50	FULL DATE & MINTMARK
25c/5c 1972-D	NGC 66	\$ 227.50	FULL DATE & MINTMARK
25c/5c 1974	NGC 62	\$ 182.50	FULL DATE
25c/5c 1974-D	BU	\$ 187.50	FULL DATE & MINTMARK AREA
25c/5c 1979	BU	\$ 139.49	FULL DATE & MINTMARK AREA
25c/5c 1980-P	BU	\$ 187.50	FULL DATE & MINTMARK
25c/5c 1980-P	PCGS 64	\$ 174.72	FULL DATE & MINTMARK
25c/5c 1982-P	AU	\$ 105.50	FULL DATE & MINTMARK
25c/5c 1983-P	NGC 58	\$ 282.89	FULL DATE & MINTMARK
25c/5c 1985-P	PCGS 55	\$ 127.50	MOST OF DATE SHOWS, ALL OF MINTMARK
25c/5c 1985-P	PCGS 55	\$ 135.51	MOST OF DATE SHOWS, ALL OF MINTMARK
25c/5c 1998-(?)	PCGS 65	\$ 350.00	HOLDER CLAIMS IT IS A "P" MINT. NO REMAINS.
25c/5c DE 1999-D	ANACS 58	\$ 499.00	FULL DATE & MINTMARK
25c/5c FL 2004-P	GEM BU	\$ 1,592.00	FULL DATE & MINTMARK
25c/5c FL 2004-P	ANACS 62	\$ 1,727.00	FULL DATE & MINTMARK
25c/5c FL 2004-P	NGC 66	\$ 2,150.00	FULL DATE & MINTMARK AREA
25c/5c FL 2004-P	PCGS 64	\$ 1,750.00	FULL DATE & MINTMARK AREA
25c/SILVER 10c NO DATE	ANACS 63	\$ 637.00	NO DATE, 90% SILVER
25c/10c 1970-D	GEM BU	\$ 306.50	ALMOST FULL DATE. FULL MINTMARK
25c/10c (1971)-(D)	NGC 58	\$ 285.00	∩ DATE & MINTMARK
25c/10c ND CLAD "D"	ANACS 61	\$ 227.50	NO DATE, MINTMARK COMPLETE
§1/25c 1979-P	ANACS 55	\$ 525.00	BIG SCRATCH ACROSS sba'S CHEEK. NOT NOTATED ON HOLDER.
§1/25c 2000-P	PCGS 65	\$ 3,350.01	FULL DATE & MINTMARK AREA
50c/5c 1998-D	PCGS 65	\$ 2,442.00	FULL DATE & MINTMARK. 5% OFF CENTER + 15% OBVERSE BROCKAGE
50c/25c 1954	AU	\$ 910.01	FULL DATE & MINTMARK AREA
50c/25c (19)64	UNC	\$ 821.51	PART OF "19" IN DATE MISSING. FULL MINTMARK AREA.
50c/25c "SILVER" NO DATE	CH BU	\$ 599.00	1964-D PLANCHET. NO DATE REMAINS. MINTMARK CLEAR.
1c/MALAYSIAN 1 SEN 1998-D	BU R&B	\$ 140.00	WEIGHS 1.9 GRAMS. FULL DATE & MINTMARK.
1c/FOREIGN PLANCHET 2000-D	ANACS 66 RED	\$ 199.50	WEIGHT = 1.68 GRAMS.
1c/FOREIGN PLANCHET NO DATE	PCGS 65 RED	\$ 405.00	MALAYSIAN PLANCHET???
5c/FOREIGN C/N PLAN.	PCGS 63	\$ 305.00	50% OF DATE SHOWS. STRUCK ON A COPPER/ NICKEL PLANCHET
25c/FOREIGN (1971)-(D)	AU	\$ 330.99	ALMOST FULL DATE & MINTMARK, OWNER CLAIMS IT WEIGHS 1.5 GRAMS

Clad Layer Split Off Errors

by Al Levy (alcoins.com)

1. ALL LOTS HAD BUYERS. IF THE COINS ACTUALLY CHANGED HANDS IS UNKNOWN.
2. A PICTURE ACCOMPANIED EACH LOT OR IT WAS NOT RECOGNIZED.
3. BLURRY PICTURES OR OTHER PROBLEMS ARE NOTATED UNDER "OBSERVATION".
4. ITEMS MISLABELLED COMMANDED A SMALL PREMIUM.
5. SOME LOTS CHANGED HANDS MORE THAN ONCE.
6. ANY SCRATCHES, DENTS OR DEFECTS NOTATED WERE EITHER IN THE DESCRIPTION OR GRADING SERVICES' HOLDERS.
7. AUCTION HOUSES THAT LISTED THESE ERRORS WERE IGNORED.
8. SHIPPING CHARGES ARE NOT INCLUDED.

06/30/04 to 12/31/04			
DESCRIPTION	GRADE	SOLD	OBSERVATION
10c 1972 REVERSE	BU	\$ 39.50	R&B COLOR.
10c 1980-P OBVERSE	PCGS 60	\$ 42.00	MULTI COLORED
10c 1995-D REVERSE	GEM BU	\$ 33.05	BLURRY PICTURES. LOOKED LIKE A FULL STRIKE. PINK COLOR. OWNER DIDNOT RESPOND TO MY QUESTION FOR ACTUAL WEIGHT.
10c 2000-D REVERSE	BU	\$ 43.00	WEIGHS 1.8 GRAMS.
10c 2001-D REVERSE	BU	\$ 45.00	NICE RED COLOR.
10c 2001-D REVERSE	CH BU	\$ 35.51	R&B COLOR.
25c 1969-D REVERSE	BU	\$ 55.35	RED & BROWN COLOR. 4.6 GRAMS
25c 1972 OBVERSE	CH BU	\$ 79.55	RED & BROWN COLOR
25c 1972-D REVERSE	PCI 55	\$ 29.51	OLD PCI RED SEAL. SCRATCHED.
25c 1974 OBVERSE	CH BU	\$ 59.00	R&B COLOR. LOOKS LIKE STRIKE THRU AREAS ON OBVERSE
25c 1979-D OBVERSE	AU	\$ 46.00	RUST COLOR
25c 1981-P OBVERSE	BU	\$ 66.00	RED
25c 1982-P OBVERSE	ANACS 64	\$ 172.50	BROWN COLOR
25c 1984-D REVERSE	UNC	\$ 58.00	R&B COLOR.
25c 1996-P OBVERSE	BU	\$ 103.51	BROWN COLOR
25c 1997-D REVERSE	BU	\$ 88.00	RED & BROWN COLOR
25c 1998-D OBVERSE	PCGS 62	\$ 94.00	R&B COLOR.
25c CT 1999-D OBVERSE	CH BU	\$ 149.99	BROWN COLOR
25c FL 2004-P REVERSE	GEM BU	\$ 350.98	NICE RED COLOR.
25c GA 1999-D OBVERSE	AU	\$ 350.00	RED COLOR. OBVERSE WAS ONLY SIDE VIEWABLE
25c GA 1999-D REVERSE	UNC	\$ 256.00	R&B COLOR.
25c IA 2004-D OBVERSE	BU	\$ 315.00	R&B COLOR.
25c LA 2002-P - OBVERSE	NGC 62	\$ 310.00	RED
25c MA 2000-D OBVERSE	NGC 65	\$ 213.61	WEAKLY STRUCK.
25c MD 2000-D OBVERSE	BU	\$ 200.00	RED COLOR
25c MD 2000-D REVERSE	ANACS 63	\$ 287.00	NICE RED COLOR.
25c MD 2000-P REVERSE	AU	\$ 150.00	LOOKS CLEANED & TWO TONED.
25c MI 2004-P REVERSE	UNC	\$ 262.00	REVERSE SCRATCHES. (MAY BE COPPER WASH & NOT CLAD LAYER OFF)
25c MI 2004-P REVERSE	CH BU	\$ 251.50	95% CLAD LAYER OFF. (THE SELLER DIDNOT RESPOND TO MY REQUEST FOR ACTUAL WEIGHT. COULD HAVE BEEN PLATED?) - 2ND TIME SOLD, SEE ABOVE
25c MI 2004-P REVERSE	CH BU	\$ 765.00	95% CLAD LAYER OFF. (THE SELLER DIDNOT RESPOND TO MY REQUEST FOR ACTUAL WEIGHT. COULD HAVE BEEN PLATED?)
25c NC 2001-P REVERSE	CH BU	\$ 304.00	R&B COLOR.
25c SC 2000-D OBVERSE	PCGS 62	\$ 225.00	RED COLOR
25c TX 2004-D OBVERSE	CH BU	\$ 599.00	RED COLOR
50c 1971 REVERSE	NGC 65	\$ 416.00	NICE RED REVERSE
\$1 sSBA 1979-D REVERSE	PCI 62	\$ 219.99	GREEN LABEL, NICE RED REVERSE

Philippine 1 Piso Struck Over Struck U.S. Quarter

This is a spectacular double denomination involving coinage from two countries. The U.S. Mint struck coins for the Philippines in the 1970's including the Philippine 1 Piso coin.

It is a large coin and there are few major mint errors known on this denomination. Somehow a struck U.S. Quarter was overstruck off-center by the Philippine 1 Piso dies. It is a spectacular and dramatic major mint error and it is extremely rare.



1876 Indian Cent Struck on a 3¢ Nickel Planchet

The standard weight for a 3¢ Nickel coin is 1.94 grams, with a tolerance of +/- 0.26 grams. Therefore, this rare off-metal is within the limit for a 3¢ Nickel planchet since it weighs 1.68 grams. There were no other similar weight planchets of the copper and nickel composition in use at the Philadelphia Mint in 1876.

Indian Cent off-metals are very rare. This mint error is sharply struck with very reflective fields. It is also a rarer date and is in gem mint state condition.



Spectacular Double Struck Clark Gruber \$20 Gold Piece

by Mike Byers (mikebyers.com)

This is a spectacular Clark Gruber and Co. double struck \$20 gold piece. Clark Gruber was the most respected and well known financial and banking company in the pioneer and Gold Rush days in Colorado. Clark Gruber and Co. opened a bank and mint in 1860 and became coiners, striking their own gold coins of proper weight. The denominations struck were \$2 1/2, \$5, \$10 and \$20. These pieces were accepted as currency since Clark Gruber and Co. was a well known private minting firm with an excellent reputation.

Although PCGS certified this double struck Clark Gruber \$20 as EF 45, in my opinion it is closer to AU 50 since it exhibits some luster and has the detail showing. Red Book lists it in EF at \$22,000 although this piece would trade for at least \$30,000 as just a regular strike.

Since it is double struck with some rotation between the two strikes, it is a spectacular and rare major mint error. It would be the centerpiece of any U.S. error collection. There are 2 or 3 known Clark Gruber \$20 gold pieces struck over Assay pieces, but that was done deliberately and is considered an overstrike and not a mint error.

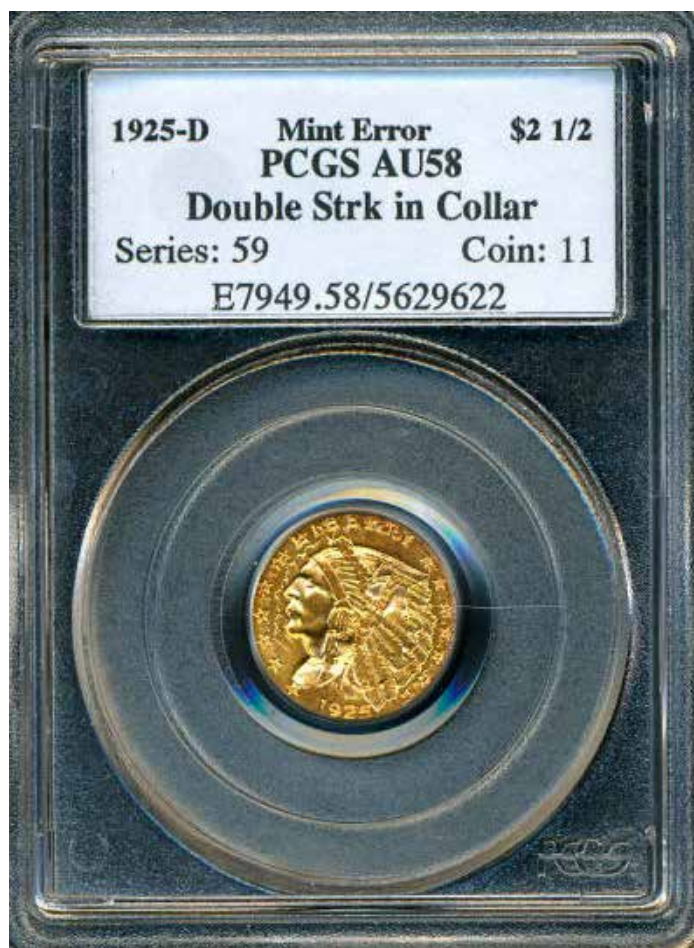




Double Struck \$2 ½ Indian Sells for \$66,125 at FUN in Heritage Galleries Auction

Editor's Note: After spirited bidding this dramatic and unique double struck \$2 ½ Indian set a record price for a \$2 ½ Indian Gold mint error. Below is the description from the Heritage Galleries listing:

Error gold coins, especially as dramatic as this example, are quite rare and always bring significant prices. The two strikes are almost exactly inverted, the first strike upside down in relation to the second. This is a sharp impression with excellent definition on both sides. The Indian's entire profile from the first strike is visible among the feathers at the lower right. Much of the lettering on the reverse overlaps other (upside down) lettering from the first strike, creating a confusing array of text. Given the incuse design of the Indian Head gold coinage, errors such as double struck coins, doubled dies, and related types have a much different appearance than their normal look.





Unique U.S. Territorial Gold Error



The Bechtlers were the first large-scale Private Gold Coiners before the Charlotte Mint was established in 1838. They also struck the first gold dollars- 18 years prior to the United States' Mint.

Christopher and his son, Augustus, struck gold \$1's, \$2 1/2's and \$5's. The weight and fineness was stamped on each gold specimen.

There was an acute shortage of circulating gold coins in the South, which is one of the primary reasons why the Bechtler Mint flourished as coiners of Territorial Gold Pieces.

Eventually the Federal Government authorized Branch Mints in Charlotte, Dahlonega, and New Orleans to satisfy the public demand for gold coins.

Production from the Bechtler Mint declined after the opening of the Charlotte Mint. But their coinage was accepted for decades after the Bechtler Mint was closed.

- * The Bechtler Coin Press is housed in the American Numismatic Society Museum.
- * The original Bechtler Dies are in the State Hall of History in Raleigh.
- * The Bechtler Mint Rollers used to shape the ingots into strips, which eventually were punched into blank planchets to strike the gold coins, are housed in the Smithsonian Museum.

THIS IS THE ONLY KNOWN CERTIFIED U.S. TERRITORIAL GOLD MAJOR MINT ERROR from the Bechtler Mint, a private U.S. Territorial Mint that struck gold coins.

This UNIQUE U.S. TERRITORIAL GOLD ERROR was struck on a DOUBLE CLIPPED PLANCHET!!

Fred Weinberg, PCGS authenticator for mint errors, numismatic author, scholar, and expert on the minting process authenticated this Bechtler Territorial Gold Coin for PCGS as a Mint Error. He stated, "I don't recall ever seeing any other major error on a U.S. Territorial Gold Piece. Any major error on a Territorial Gold coin is extremely rare."

Doug Winter, numismatic author, scholar, and expert on rare United States gold coins stated that "in over two decades of specializing in U.S. gold coins I've never seen an error on a Territorial gold coin. This is a major find!"

All U.S. major gold errors are extremely rare. THIS IS A DISCOVERY PIECE and belongs in the finest collection of Major Mint Errors, or in a United States gold coin collection.



CoinFacts.com

Your Online Reference For U.S. Coins



**“The Ultimate Coin Book” by CoinFacts.com, Inc.
Now Available on CD-Rom**

Our new CD-Rom is a mirror image of the CoinFacts website but with no download delays caused by slow Internet connections. In fact, no Internet connection is required at all, making the CoinFacts CD-Rom perfect for use in your home, office or even your portable computer at coin shows. Plop the CoinFacts CD-Rom in your PC and have immediate, lightning-fast access to the thousands of full color images and indispensable numismatic information. Please visit CoinFacts.com for more information and to purchase.

eureka trading systems



eureka trading . com

BYERS NUMISMATIC CORP

MIKEBYERS.COM



The Largest Dealer of the World's Rarest Mint Errors™

U.S. ERRORS • WORLD & ANCIENT ERRORS • DIE TRIALS • CURRENCY ERRORS

BUYING & SELLING

MAJOR U.S. MINT ERRORS

- ANACS, PCGS, NGC, ICG, SEGS & RAW
- U.S. 1¢ THRU \$50 ERRORS
- 19TH AND 20TH CENTURY TYPE COINS:
ALL DENOMINATIONS
- MODERN COINS: STATES QUARTERS, KENNEDY HALVES, IKE, SBA AND SACAGAWEA DOLLARS
- MAJOR AND DRAMATIC ERRORS FROM \$500 TO \$100,000
- DIE TRIALS, HUB TRIALS, SPLASHERS, UNIFACE AND OFF-METAL STRIKES

U.S. CURRENCY ERRORS

- ESPECIALLY ERRORS ON \$2, \$50, \$100 & \$500 NOTES
- DRAMATIC AND UNIQUE PRINTING & CUTTING ERRORS FROM \$500 TO \$10,000
- DOUBLE DENOMINATIONS, MULTIPLE IMPRESSIONS & MULTIPLE ERRORS
- LARGE SIZE NOTE ERRORS

WORLD GOLD & SILVER ERRORS

- ANACS, PCGS, NGC, ICG & RAW
- ALL DENOMINATIONS FOR MAJOR WORLD COUNTRIES
- ESPECIALLY SWISS, GERMAN, ENGLISH, FRENCH, CANADIAN & MEXICAN
- ALL 12 COUNTRIES IN THE EUROPEAN MONETARY UNION (EUROS)
- ALL COUNTRIES IN THE BRITISH COMMONWEALTH
- MEDIEVAL THRU MODERN
- MAJOR AND DRAMATIC ERRORS FROM \$500 TO \$50,000
- DIE TRIALS, SPLASHERS, UNIFACE AND OFF-METAL STRIKES

ANCIENT ERRORS

- ANACS, ICG & RAW
- ALL GOLD DENOMINATIONS
- 500 BC TO 950 AD
- GREEK, ROMAN AND BYZANTINE COINAGE
- MAJOR AND DRAMATIC ERRORS FROM \$500 TO \$10,000

MIKE BYERS

P.O. Box 5090, San Clemente, CA USA 92674

Office: 949-276-7072 • Fax: 949-276-7073

Fed Ex Address only: 1001 Avenida Pico #C 612, San Clemente, CA 92673

E-Mail: mike@mikebyers.com • Website Design: sam@mikebyers.com

Mike Byers, Professional Numismatist since 1978

Byers Numismatic Corp. A California Corporation Since 1980

Mike Byers is a consultant to ANACS for Mint Errors



Rare Mint Errors From Northeast Numismatics

1969-S Proof Roosevelt Dime Struck Clad Layer

All major proof errors are rare. This is the first struck clad layer on any U.S. denomination struck in proof. It is still in the original 1969-S proof set holder issued by the U.S. Mint in San Francisco.



1826 Large Cent Struck 10% Off-Center

N-5 10% Off center rare early date exceptional quality, and visually pleasing The only piece we are aware of off-center of this date!



NORTHEAST NUMISMATICS INC. RARE COINS · PERSONAL SERVICE

Northeast Numismatics
10 Concord Crossing, Ste. 220
Concord, MA 01742
800-449-2646
www.northeastcoin.com

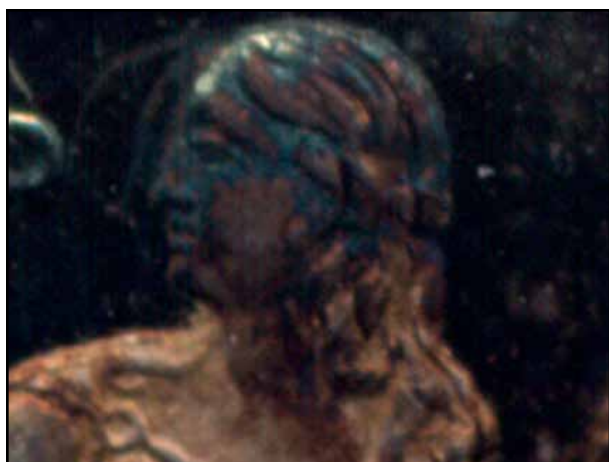
Northeast Numismatics has an impressive inventory of over 1,200 U.S. and foreign coins. We have a strong selection of mint errors, both U.S. and foreign. And we carry every area of United States coinage from colonials through rare gold including type, commemoratives, silver dollars and much, in addition to our extensive inventory of world coins.

High quality "fresh" coins are what we are known for and take pleasure in offering. We constantly are hearing from our customers about our excellent prices and high customer service. 2003 is our 39th year of business, so order with complete confidence. Also, please keep in mind that we are always buying coins of all kinds, certified and uncertified, to fill our want lists.

1863 Proof Seated Dime

Triple Struck With Obverse Rotation

All major mint errors on proof coins are very rare, especially on early type coins. This proof Seated Dime was struck at least three times on the obverse. You can clearly see at least three heads and portraits. It is a very dramatic proof error and it is also in gem condition.



1853 \$1 U.S. Gold Type 1 Broadstruck and Partial Collar

This is the only known broadstruck Type 1 \$1 Gold Piece. It is difficult to view this broadstruck mint error since it is certified. The holder makes it difficult to see the expanded planchet and the edge, since it was struck out of the collar. It is also a partial collar since there is a small section of reeding visible. This error is very dramatic because it also has a cupped shape. All U.S. gold major mint errors are very scarce.



Insurance Considerations

Basic factor: Insurance carriers will vary throughout the World on the amount they insure the contents of a single separate safe.

The main factors that must be considered are:

- 1) The type of items to be insured, in jewelry; - loose diamonds, or diamonds mounted jewelry etc, in metals-- bullion, coins with rare or unique evaluation etc.
- 2) The police response time.
- 3) The neighborhood and proximity to other businesses.
- 4) The perimeter alarm system and/or outside burglar hindrances such a walls, gates, bars, etc.
- 5) The "safe" area inside (room), doors, gates, locks, alarms etc.
- 6) Last but the most important.. The UL rating of the safe to be utilized. Namely, TL-15?, TL-30?, TL-30X6,? TRTL-30X6?

The insurance underwriter will depend heavily on the Underwriter Laboratories' independent testing of all safes in the United States. For a manufacturer to obtain approval, each safe at a particular rating, they must undergo stringent U.L. tests to earn labeling of each type of safe.

These tests are made frequently by Underwriters Laboratories, particularly if new types of attack tools are evolved.

The amount of insurance, covered as you can see from the previous discussion, is strongly influenced by the UL safe Rating. An approximate guideline, and again, only a guideline (since insurance carriers vary) is indicated below for the most popular UL ratings.



PRICE COMPARISON OF MOST USED UL SAFE RATINGS

UL RATING	CAP (cu/ft.)	WT (#)	PRICE (1)
TL-30	15	2787	\$ 3,200.00
TL-30X6	16	3055	\$ 4,900.00
TRTL-30X6	15	3590	\$ 9,600.00

TL-30	21	3455	\$ 3,600.00
TL-30X6	22.1	4202	\$ 5,500.00
TRTL-30X6	23	4550	\$ 11,500.00

INSURANCE GUIDELINES*

TL- 30 composite (2)	\$ 350,000-500,000
TL-30X6 composite.....	\$ 500,000-750,000
TRTL-30X6 composite.....	\$ 1,000,000-2,000,000
TRTL-60X6 composite.....	\$ 2,000,000-up

SPECIAL NOTES:

(1) Above approximate prices include delivery and installation

(2) Composite safes usually carry a larger coverage than steel only safes with the same UL. Pricing for composite safes also are lower in cost; therefore, steel only safes are not obviously considered here.

UL rating only covers tool and/or torch attacks. Fire protection is not part of the TL testing. Look for separate UL or independent Lab testing and labeling.

Insurance guidelines are exactly what they are, and not to be considered hard and fast figures. Many variances exist with respect to Insurance Carriers, as well as, the many factors with respect to the actual safe content and location and all the ancillary protection! Contact your insurance agent for exact figures.

Bob McLaughlin
Maximum Security Safe Corp
(800) 838-0600

10-1-2000



BYERS NUMISMATIC CORP



MIKEBYERS.COM



The Largest Dealer of the World's Rarest Mint Errors™

U.S. & WORLD MAJOR MINT ERRORS • DIE TRIALS • NUMISMATIC RARITIES



Unique SPECIMEN Silver Certificate Set of 16
PCGS Certified



1920 SL 25¢
Struck on Peru 20C Planchet
NGC MS 60 FH Unique



1838 \$5 Die Trial Splasher
J-A1838-6
PCGS MS 65 UNIQUE



Unique 1866 \$2½ Struck on a 3 Cent Nickel Planchet
NGC MS 66



Pair of Indian Head 1¢ Die Caps
Obverse & Reverse
PCGS MS 64



Barber Half
Full Obverse Brockage
PCGS AU 58 UNIQUE



Unique Set of Four Paraguay Gold Overstrikes
NGC Certified



1921-S Morgan Dollar
Struck 45% Off-Center
NGC MS 63



1895-O Barber Dime
Obverse Die Cap
PCGS MS 64



1846 J-110A \$5 Obv Die Trial
Struck on \$2½ Trial
NGC MS 65 BN



1924 SL 25¢
Double Struck
ANACS AU 55



1862 Indian Head 1¢
Deep Obverse Die Cap
PCGS MS 62



Unique Set of Three Paraguay Gold Overstrikes
NGC Certified



1887 \$3 Indian Gold Proof
Triple Struck
PCGS PR 63



1942 Walking Liberty 50¢
Struck on Silver 25¢ Planchet
PCGS MS 65



Unique Jefferson Nickel
Die Trial
PCGS Certified



1802/1 \$5 Draped Bust Gold
Triple Struck Obverse
ANACS EF 45



1865 2¢
Deep Obverse Die Cap & Brockage



1804 \$2½ Capped Bust To Right
Double Struck
NGC Fine 15



1898 Barber 25¢
Obverse Die Cap & Brockage
PCGS MS 62



1945-S WL 50¢
Struck on El Salvador 25¢ Planchet
NGC MS 63 UNIQUE



1806 \$5 Capped Bust Triple Struck
Rotated 90°
PCGS AU 50



1865 \$1 Indian Gold Proof
Triple Struck Reverse
PCGS PR 64 Cameo



1920 Buffalo Nickel
Struck on Copper Planchet
NGC AU 55 UNIQUE



1874 \$1 U.S. Gold T3
Full Brockage
PCGS MS 62 UNIQUE



1873 \$20 Closed 3 J-1344
Double Struck
NGC PF 61 RB



1901/0-S \$5 Liberty Gold
10% Off-Center
PCGS AU 55



1853 U.S. Assay Gold \$20
Double Struck
NGC AU 55



1965 English Penny
Struck on Gold Planchet
PCGS MS 62



1875-CC \$20 Liberty Gold
Partial Collar
NGC MS 62



Pair of Barber Dime Die Caps
Obverse & Reverse
PCGS AU 55 UNIQUE



Franklin Half Dollar
Struck on 1948 Cent
NGC MS 64 BN



1910 Lincoln Cent
Uniface Test Strike
PCGS AU 58



1904 \$20 Gold
Double Struck
ANACS MS 60 Proof-Like



Indian Cent on Half Dime Planchet
Uniface Obverse
PCGS MS 63



1851 3¢ Obverse & Reverse
Die Trials
Struck on Cardboard



1864 2¢ Obverse Die Cap
Mated With Brockage
PCGS MS 62



Martha Washington Dollar Test Piece
Clad Plan w/Exp Edge
NGC MS 64



1869 Indian Cent
Struck on Silver Dime Planchet
PCGS AU 55



1856 Large Cent Obverse Cap/
Brockage Reverse
Gem BU



Martha Washington Dollar Test Piece
Sac Plan w/Exp Edge
NGC MS 64



1906-D \$20 Liberty Gold
Broadstruck
NGC AU 58

Spectacular Proof Gold Mule

by Mike Byers (mikebyers.com)

This is one of the most spectacular mint error mules of all time. The obverse of the regular design of the George IV Bare Head Half Sovereign was paired with an 1823 pattern reverse.

No 1829 Half Sovereigns were ever struck. It is one of two known. The other piece is impounded in the Royal Mint Collection. It is also a Dual Date with different dates on obverse and reverse. No other gold mules are known, mint state or proof.

This is an extreme rarity with a great history and pedigree. It is comparable to a U.S. numismatic rarity that sells for high six figures or more with only a few known and one impounded in the Smithsonian.





DOWNLOAD NOW AT MIKEBYERS.COM

HARD COPIES ARE AVAILABLE TO OUR REGULAR CUSTOMERS

BYERS NUMISMATIC CORP
MIKEBYERS.COM



The Largest Dealer of the World's Rarest Mint Errors™
U.S. ERRORS • WORLD & ANCIENT ERRORS • DIE TRIALS • CURRENCY ERRORS

Mike Byers' 2005 Catalog

Featuring
U.S. & World
Major Mint Errors
and Die Trials

This catalog features almost 700 rarities with a value of over \$6 million.



CONECA

The Combined Organizations of Numismatic Error Collectors of America



CONECA is a national numismatic organization devoted to the education of error and variety coin collectors. CONECA focuses on many error and variety specialties, including doubled dies, Repunched mintmarks, multiple errors, clips, double strikes, off-metals and off-centers -- just to name a few. It publishes an educational magazine, The Errorscope, which is printed and mailed to members bimonthly. CONECA offers a lending library, examination, listing and attribution services; it holds annual meetings at major conventions (referred to as Errorama) around the country, and offers auction services to its members. Please visit conecaonline.org and enjoy!

CONECA Variety Attribution Services

CONECA offers two attribution services. One service enables members and non-members to send their coins directly to an authorized CONECA attributer. The other service is offered through the numismatic grading firm of ICG and enables CONECA members and non-members to have their coins attributed by a CONECA attributer and then graded and slabbed by ICG.

CONECA Error Examination Services

CONECA offers two examination services. One service enables members and non-members to send coins to an authorized CONECA examiner who will return an opinion of each coin's error classification. The other service is offered through the numismatic grading firm of ICG and enables CONECA members and non-members to have their coins examined by a CONECA examiner and then graded and slabbed by ICG.

conecaonline.org

Rare Pattern Mint Errors

by Saul Teichman (uspatterns.com)

Broadstruck J158/P185

The following broadstruck one cent pattern was offered in Superior's 5/2003 sale. It also appears to have been struck from misaligned dies as the reverse appears off-center.



Double Struck J164/P189

The following flying eagle cent pattern shows slight double striking on the reverse most noticeable in the lower denticle area.



Double Struck J251/P290

The following Paquet half dollar has a slightly double struck obverse. This is most noticeable on Liberty's head.



Double Struck 1838 Half Dollar Pattern

by Saul Teichman (uspatterns.com)

Error Pattern coins are extremely rare. There are fewer than 2 dozen confirmed errors over the course of the entire pattern series. One of the earliest is shown here. It is an example of J79a, showing the popular seated liberty obverse here dated 1838 combined with a flying eagle reverse similar to that used on the 1838 pattern dollars.

This piece shows about a 20

degree rotation between strikes on the reverse. This is most noticeable between the eagle's tail feather and the letters "AR" of "DOLLAR" where the original striking of the tail feather and talon can be easily seen.

This, one of about a dozen known, is the Mint Collection specimen presently in the Smithsonian Institution.



Photo courtesy of Rick Kay.



BYERS NUMISMATIC CORP



MIKEBYERS.COM



The Largest Dealer of the World's Rarest Mint Errors™

U.S. ERRORS • WORLD & ANCIENT ERRORS • DIE TRIALS • CURRENCY ERRORS

Consign Your Coins to Mike Byers

Terms and Conditions

We are offering this service for error collectors and dealers alike. The reason why we are doing this is to promote the error business through the world wide web and to connect error collectors with the coins they have been searching for. In order to post your item on our web site: byersnc.com, you must agree to the following terms and conditions.

1. All major U.S. mint errors are accepted if they are certified by ANACS, PCGS, NGC or ICG.
2. The approximate value of each item must exceed \$1000.
3. The minimum time for any listing is thirty days.
4. Seller agrees to a seven day return privilege from date of receipt.
5. Seller agrees to use an escrow service if requested by the buyer.
6. We reserve the right to deny or cancel any listing at any time.
7. All listing are subject to prior sale.

Please do not offer us the following:

1. More than two coins bonded together.
2. Caps more than ½ inch high.
3. U.S. Errors that were obviously and intentionally struck as error coins. No impossible mint errors.

We only accept consignments of U.S. Errors that were legitimately found or released thru normal distribution channels.

Scanning Specifications

1. Scan both the obverse and reverse of the entire holder.
2. Scan with a resolution of at least 300 dpi.
3. Save the picture in jpeg format (jpg).

Information Requirements

In addition to e-mailing a photo of your item, please include the following information:

1. Name, Address & Phone Number
2. E-Mail Address
3. Asking Price

After your item is listed, we will contact you by e-mail with any offers and questions. Once a price is agreed upon we will handle the entire sale for a 10% transaction fee, which includes all costs (eBay fees, grading fees, webmaster charges, postage and registration fees, insurance, paperwork, etc.).

If you have a Mint Error collection for sale or would like to sell your duplicates and do not want to consign your coin(s), we can purchase your entire collection outright. Please contact us at mike@mikebyers.com.

Coming In 2005 From Zyrus Press
A New Book By Mike Byers

From the Publisher & Editor of mintererrornews.com

MINT **E**R R O R GUIDE

Your Guide to the Most Spectacular Major Mint Errors



DISCOVERIES

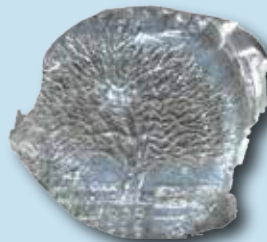
AND

PRICE GUIDE

FOR U.S. AND WORLD

MAJOR MINT ERRORS

AND DIE TRIALS



by **Mike Byers**

Design & Layout: Sam Rhazi

ZYRUS
PRESS

P.O. 17810
Irvine, CA 92623
(888) 622-7823



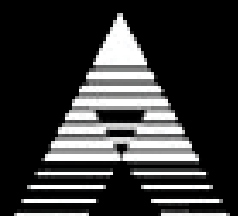
Extraterrestrial Numismatics

www.anacs.com

ANACS is the Collector's Choice because we know what counts: knowledge, integrity, and service. How much we value coin collecting is evident in our work.

The ANACS team enthusiastically works to advance coin collecting by offering unequalled expertise and developing new services.

This makes ANACS the choice of hobbyists, professional numismatists, and dealers. We are the coin grading service to contact when you want to know all the details about your coin's authenticity and grading.



Collect with passion. ANACS

Mint Error News Price Guide

This price guide is brought to you by Mint Error News. It has been compiled by many of the top major mint error dealers.

This price guide is a guide. Prices fluctuate due to the date, grade, eye appeal and how dramatic the striking error is. Rarity is also a factor. The price is sometimes based on the rarity and grade of the type of coin as well as how rare the error is. The price can also vary depending on whether two collectors are bidding for the same rare major mint error. When purchasing a mint error, it is important to use multiple resources to determine value, as there are many mint errors that do not fit into one category.

Proof Errors



Proof coins are struck by technicians who hand feed the blanks into special presses. They are produced, examined, and packaged using extreme quality control. It is very unusual to find major proof errors. A few broadstrikes, off-centers, double strikes in collars and off-metals have been known to be found in sealed proof sets. Proof errors are aggressively sought after by many error collectors.

A very small group of Proof errors recently came from a collection that was auctioned by the State of California. The U.S. Secret Service inspected and released this collection to the State of California determining that it was legal to own. The State of California then auctioned the collection and it has been dispersed since the sale.

Denomination	Broadstrikes	Die Trials	Double/Triple Strikes	Off-Center Strikes	Partial Collar Errors
Proof Lincoln Cent	\$1,500 - \$2,500	N/A	\$4,000	\$1,500 - \$3,000	\$750
Proof Jefferson Nickel	\$2,500 - \$4,000	\$4,000	\$6,000	\$2,000 - \$5,000	\$1,000
Proof Clad Dime	\$3,000 - \$5,000	N/A	\$6,000	\$2,500 - \$5,000	\$1,250
Proof Clad Quarter	\$4,000 - \$5,000	N/A	\$7,500	\$3,000 - \$6,000	\$1,500
Proof Clad Half	\$5,000 - \$7,000	\$4,000 - \$5,000	\$7,500	\$4,000 - \$7,500	\$2,000

Mint Error News Price Guide

Broadstrikes



A broadstruck error occurs when a coin is struck without the collar to form the rim and edge that is part of the shape of the coin. Coins can be broadstruck on either type one or type two planchets. When a coin is broadstruck the blank being fed into the collar will spread and distort outward as it is being struck because the collar isn't in the correct position to retain it.

Denomination	(Small) XF/AU	(Small) Unc	(Large) XF/AU	(Large) Unc
Large Cent	\$150	\$300	\$400	\$1,500
Flying Eagle Cent (1857 – 1858)	\$1,000	\$2,500	\$1,500	\$5,000
Indian Cent	\$50	\$150	\$200	\$350
Lincoln Cent 1930 and Earlier	\$50	\$150	\$100	\$250
Lincoln Cent 1943 Steel	\$40	\$100	\$75	\$200
Proof Lincoln Cent	N/A	\$1,500	N/A	\$2,500
3 Cent Nickel	\$250	\$1,000	\$400	\$1,500
3 Cent Silver	\$1,000	\$3,500	\$1,500	\$5,000
Shield Nickel	\$400	\$1,250	\$1,000	\$2,500
Liberty Nickel	\$150	\$300	\$200	\$600
Buffalo Nickel	\$100	\$200	\$200	\$500
Jefferson Nickel War Time	\$100	\$200	\$200	\$500
Proof Jefferson Nickel	N/A	\$2,500	N/A	\$4,000
Seated Half Dime Legend	\$1,500	\$3,500	\$2,000	\$7,500
Seated Dime Legend	\$1,500	\$3,500	\$2,000	\$7,500
Barber Dime	\$150	\$250	\$200	\$400
Mercury Dime	\$40	\$150	\$150	\$250
Proof Clad Dime	N/A	\$3,000	N/A	\$5,000
Barber Quarter	\$600	\$1,250	\$1,000	\$2,500
Standing Liberty Quarter	\$2,000	\$4,000	\$3,000	\$6,000
Washington Quarter Silver	\$75	\$150	\$100	\$250
State Quarter	N/A	\$25	N/A	\$50
Proof Clad Quarter	N/A	\$4,000	N/A	\$5,000
Barber Half	\$2,500	\$3,500	\$3,000	\$5,000
Walking Liberty Half	\$3,000	\$5,000	\$4,000	\$7,000
Franklin Half	\$1,500	\$3,000	\$2,000	\$4,000
Kennedy Half Silver	\$150	\$250	\$200	\$300
Kennedy Half Clad	\$40	\$60	\$50	\$75
Proof Clad Half	N/A	\$5,000	N/A	\$7,000
Morgan Dollar	\$200	\$500	\$400	\$1,000
Peace Dollar	\$4,000	\$6,000	\$6,000	\$7,500
IKE Dollar	\$100	\$150	\$150	\$200
SBA Dollar	\$50	\$75	\$100	\$200
Sac Dollar	N/A	\$300	N/A	\$500

Mint Error News Price Guide

Partial Collars



Partial collar strikes occur when there is a malfunction of the striking press. This causes the collar to be in an incorrect position. The lower die (usually the reverse die) is recessed in the collar. This allows the coin which is going to be struck to have a formed rim. After a coin is struck the lower die raises upwards, pushing the struck coin out of the collar and ejecting it. If a blank entering the collar is not properly seated, it will only have partial reeding as it is struck. The edge of this coin will have a partial reeding and a partial blank surface area. Recently, the Mint has installed new machinery where either die can be installed in either position.

Denomination	XF/AU	Unc
Large Cent	\$100	\$200
Flying Eagle Cent (1857 – 1858)	\$500	\$1,500
Indian Cent	\$35	\$100
Lincoln Cent 1930 and Earlier	\$30	\$100
Lincoln Cent 1943 Steel	\$25	\$50
Proof Lincoln Cent	N/A	\$750
3 Cent Nickel	\$150	\$500
3 Cent Silver	\$750	\$2,000
Shield Nickel	\$200	\$600
Liberty Nickel	\$50	\$150
Buffalo Nickel	\$50	\$75
Jefferson Nickel War Time	\$40	\$60
Proof Jefferson Nickel	N/A	\$1,000
Seated Half Dime Legend	\$750	\$1,500
Seated Dime Legend	\$500	\$1,250
Barber Dime	\$75	\$150
Mercury Dime	\$30	\$100
Proof Clad Dime	N/A	\$1,250
Barber Quarter	\$300	\$750
Standing Liberty Quarter	\$1,250	\$2,000
Washington Quarter Silver	\$40	\$75
State Quarter	N/A	\$15
Proof Clad Quarter	N/A	\$1,500
Barber Half	\$1,000	\$1,500
Walking Liberty Half	\$1,500	\$3,500
Franklin Half	\$500	\$1,000
Kennedy Half Silver	\$50	\$100
Kennedy Half Clad	\$20	\$30
Proof Clad Half	N/A	\$2,000
Morgan Dollar	\$150	\$300
Peace Dollar	\$1,000	\$2,500
IKE Dollar	\$50	\$100
SBA Dollar	\$20	\$30
Sac Dollar	N/A	\$100

Mint Error News Price Guide

Uniface Strikes



Uniface coins occur when there have been two blank planchets in the press at the same time. The other blank will obstruct the die on either the obverse or reverse side, which will prevent it from having that design on the coin. There are many different variations involving uniface errors. In addition to having a 100% blank obverse or reverse, a coin can be struck off-center, with a blank planchet in the collar which will obstruct one side of the off-center. There are also mated pairs which have a combination of multiple errors which can include a side which is uniface. Finally, there are uniface strikes due to a die cap which adhered to the die, forming itself in the shape of a die and striking blank planchets.

Denomination	Uniface Obverse XF	Uniface Obverse Unc	Uniface Reverse XF	Uniface Reverse Unc
Large Cent	\$1,500	\$4,000	\$1,250	\$3,000
Indian Cent	\$1,250	\$3,000	\$1,000	\$2,500
Lincoln Cent 1943 Steel	\$250	\$500	\$200	\$400
Lincoln Cent Wheat Ears	\$50	\$100	\$40	\$75
3 Cent Nickel	\$1,500	\$3,000	\$1,250	\$2,500
Shield Nickel	\$1,750	\$4,000	\$1,500	\$3,000
Liberty Nickel	\$2,000	\$3,500	\$1,500	\$3,000
Buffalo Nickel	\$2,250	\$3,000	\$2,000	\$2,500
Jefferson Nickel War Time	\$300	\$750	\$250	\$500
Jefferson Nickel	\$20	\$40	\$20	\$40
Barber Dime	\$2,000	\$3,000	\$1,500	\$2,500
Mercury Dime	\$1,500	\$2,500	\$1,250	\$2,250
Roosevelt Dime Silver	\$100	\$150	\$100	\$150
Roosevelt Dime Clad	\$40	\$75	\$35	\$60
Washington Quarter Silver	\$400	\$750	\$350	\$500
Washington Quarter Clad	\$100	\$125	\$75	\$100
State Quarter	N/A	\$300	N/A	\$500
Kennedy Half Clad	\$750	\$1,000	\$500	\$750
IKE Dollar	\$2,000	\$3,000	\$1,750	\$2,500
SBA Dollar	N/A	\$1,000	N/A	\$750
Sac Dollar	N/A	\$1,500	N/A	\$1,000

Mint Error News Price Guide

Bonded Coins



Bonded coins occur when the feeder system, which supplies blank planchets to the coin press, malfunctions and jams. When this occurs, a struck coin is not properly ejected and another planchet is fed into the collar and is struck. This struck coin will land on top of the previously unejected strike. These coins will then crush and bond together. This may occur many times as more coins bond.

Denomination	2 Planchets	3-4 Planchets
Lincoln Cent Wheat Ears	\$2,500	–
Lincoln Cent Memorial	\$400	\$1,000
Jefferson Nickel	\$600	\$1,500
Roosevelt Dime Silver	\$1,000	–
Roosevelt Dime Clad	\$600	\$2,000
Washington Quarter Silver	\$2,500	–
Washington Quarter Clad	\$1,500	–
State Quarter	\$5,000	–
Kennedy Half Silver	\$10,000	–
Kennedy Half Clad	\$7,500	–
IKE Dollar	–	–
SBA Dollar	–	–
Sac Dollar	–	–

Mint Error News Price Guide

Coins Struck on Feeder Finger Tips



After a recent tour of the U.S. Mint at Philadelphia, it was discovered that the minting process had changed to some degree. One of the changes was that “feeder fingers” were used during the striking of all denominations of U.S. coins. Prior to this tour, U.S. coins that were struck on feeder finger tips were authenticated and described as being struck on aluminum scrap. Coins from all modern denominations have been discovered that were struck on the tips of these feeder fingers.

Denomination	Small	Medium	Large
Lincoln Cent Memorial	\$2,500	\$3,500	\$5,000
Jefferson Nickel	\$3,000	\$4,500	\$6,000
Roosevelt Dime Clad	\$3,000	\$6,000	\$7,500
Washington Quarter Clad	\$4,000	\$6,000	\$7,500
State Quarter	\$4,500	\$6,500	\$8,500
Kennedy Half Clad	–	–	–
SBA Dollar	–	–	\$12,500
Sac Dollar	\$4,500	\$7,500	\$10,000

Mint Error News Price Guide

Struck Fragments



The blanking press takes the coils of metal strips and punches blanks out of it, ejecting the webbing at the other end. The webbing is cut into small scrap pieces to be melted and recycled. Occasionally a scrap piece will be mixed with the blank planchets and struck by the dies. Struck fragments are rare in the larger denominations. These can be uniface or die struck both sides and are very rare on type coins.

Denomination	Uniface	Die Struck Both Sides
Indian Cent	–	\$4,000
Lincoln Cent Wheat Ears	\$750	–
Lincoln Cent Memorial	\$75	\$125
3 Cent Nickel	–	\$7,500
Jefferson Nickel	\$100	\$200
Roosevelt Dime Silver	\$300	\$750
Roosevelt Dime Clad	\$150	\$250
Washington Quarter Silver	\$750	–
Washington Quarter Clad	\$200	\$300
State Quarter	\$750	\$1,000
Kennedy Half Silver	–	–
Kennedy Half Clad	\$750	\$1,250
IKE Dollar	–	–
SBA Dollar	\$2,000	\$4,000
Sac Dollar	–	–

Mint Error News Price Guide

Mated Pairs



Mated pairs involve two individual coins with different errors that were struck together at the same time. Mated pair error combinations can be found in most error types and come in many shapes and sizes. Mated pairs can be overlapped when one of the coins is struck off-center on top of another coin. Another type involves a brockage where a struck coin was perfectly centered on a blank and restruck. Some mated pairs involve a die cap where the cap and brockage coin are discovered together, but this is a scarce find.

The rarest mated pair type involves two die caps (obverse and reverse) where both dies were capped at the same time and both die caps are mated. This last type is extremely rare and there are only a few known examples of mated pairs involving an obverse die cap and reverse die cap. There are several of these mated pairs known on Kennedy Halves including two dated 1976, which is the Bicentennial year. One of the most spectacular mated pairs involve two Barber Dimes, an obverse die cap mated to a reverse die cap and are unique.

Mated pairs can also involve an off-metal where a smaller blank planchet or smaller struck coin was struck on top of a larger coin. This type is extremely rare. The most spectacular pair known is a double struck Franklin Half which was mated to a Lincoln Cent. The Lincoln Cent blank was on top of the obverse of the struck Franklin Half. This pair was then struck together. It is unique.

Denomination	Overlapping	Full Brockage	Die Cap	2 Die Caps
Lincoln Cent Wheat Ears	\$1,000	\$1,500	–	–
Lincoln Cent Memorial	\$200	\$300	\$500	\$750
Liberty Nickel	–	\$20,000	–	–
Jefferson Nickel (pre War Time)	–	–	–	\$15,000
Jefferson Nickel	\$350	\$500	\$650	\$1,000
Barber Dime	–	–	–	\$40,000
Roosevelt Dime Silver	\$1,000	\$2,000	\$1,500	–
Roosevelt Dime Clad	\$500	\$750	\$1,250	\$2,000
Washington Quarter Silver	\$2,000	–	–	–
Washington Quarter Clad	\$1,000	\$2,500	–	–
State Quarter	\$3,000	\$5,000	\$7,500	–
Kennedy Half Silver	–	–	\$10,000	–
Kennedy Half Clad	\$7,500	\$8,500	\$10,000	\$12,500
IKE Dollar	–	–	–	–
SBA Dollar	\$7,500	–	–	–
Sac Dollar	–	–	–	–

Mint Error News Price Guide

Transitional Errors



A transitional error occurs when a coin is struck on a planchet from a previous year with different metal composition. The most famous transitional is a 1943 copper cent struck on a 1942 copper blank. 1943 cents were struck in steel because of the copper shortage during World War II. Other famous transitionals include 1965 coinage struck in silver instead of clad.

There are also transitionals struck on blanks for the next year. An example is 1964 coinage in clad instead of silver. Most recently, transitionals were discovered involving the SBA and Sacagawea Dollars of 1999 and 2000. There are eight known 1999 SBA Dollars struck on the brass planchet for the 2000 Sacagawea Dollar, and four known 2000 Sacagawea Dollars struck on a clad planchet for the 1999 SBA Dollar.

Denomination	Off-Metal Planchet	Circulated	AU	Unc	Choice Unc – Gem
Lincoln Cent 1943 Transitional	Copper Cent Planchet	\$40,000 +	\$60,000 +	\$85,000 +	\$100,000 +
Lincoln Cent 1944 Transitional	Steel Cent Planchet	\$7,500	\$12,500	\$17,500	\$25,000
Lincoln Cent 1964 Transitional	Clad Dime Planchet	\$2,500	\$4,000	\$5,000	\$6,500
Lincoln Cent 1965 Transitional	Silver Dime Planchet	\$2,750	\$4,500	\$6,000	\$7,500
Roosevelt Dime 1964 Transitional	Clad Dime Planchet	\$5,000	\$6,500	\$7,500	\$8,500
Roosevelt Dime 1965 Transitional	Silver Dime Planchet	\$5,000	\$6,500	\$7,500	\$8,500
Washington Quarter 1964 Transitional	Clad Quarter Planchet	\$5,000	\$6,500	\$7,500	\$8,500
Washington Quarter 1965 Transitional	Silver Quarter Planchet	\$5,000	\$6,500	\$7,500	\$8,500
Kennedy Half 1964 Transitional	Clad Half Planchet	\$5,000	\$6,000	\$7,000	\$9,000
Kennedy Half 1965 Transitional	Silver Half Planchet	\$5,000	\$6,500	\$7,500	\$10,000
Kennedy Half 1964 Transitional	Clad Quarter Planchet	\$5,000	\$6,000	\$7,500	\$8,500
Kennedy Half 1965 Transitional	Silver Quarter Planchet	\$6,000	\$7,500	\$8,000	\$9,000
Ike Dollar Transitional	40% Silver Planchet	\$2,750	\$3,000	\$3,500	\$4,000
SBA Dollar Transitional	Sacagawea Planchet	N/A	N/A	\$12,500	\$15,000
Sacagawea Dollar Transitional	SBA Planchet	N/A	N/A	\$12,500	\$15,000

Mint Error News Price Guide

U.S. Gold Errors



Major mint errors on U.S. Gold coins are the most prized category of all mint errors. Gold errors are very rare and a few have traded in the \$75,000 to \$100,000 range. Even a broadstruck U.S. Gold coin can easily sell for \$15,000 to \$30,000 compared to a broadstruck Cent, Nickel, Dime or Quarter which all sell for well under \$10. Many serious collectors of Gold Errors have to wait patiently for months and sometimes even years to acquire that one special piece for their collection.

The prices listed here are for common dates in AU-Unc. Better dates and errors that are in gem condition are worth considerably more.

Denomination	Partial Collar	Broadstruck	Clipped Planchet	3% - 5% Off-Center	10% - 15% Off-Center
\$1 Gold Type 1	\$5,000	\$10,000	\$5,000	\$12,500	\$20,000
\$1 Gold Type 2	\$6,000	–	\$12,500	–	–
\$1 Gold Type 3	\$4,000	\$7,500	\$5,000	\$10,000	\$20,000
\$2½ Liberty	\$5,000	\$7,500	\$4,000	\$10,000	\$15,000
\$2½ Indian	–	–	\$4,000	\$7,500	\$12,500
\$3 Indian	\$7,500	\$20,000	\$7,500	–	–
\$5 Liberty	\$6,000	\$12,500	\$6,000	\$15,000	\$25,000
\$5 Indian	–	–	\$6,000	\$15,000	\$30,000
\$10 Liberty	\$10,000	\$20,000	\$7,500	\$25,000	\$40,000
\$10 Indian	–	–	\$7,500	\$25,000	\$40,000
\$20 Liberty	\$10,000	\$25,000	\$10,000	\$30,000	\$150,000
\$20 St. Gaudens	–	–	\$10,000	–	–
\$5 American Eagle	\$1,000	\$2,000	\$750	\$2,500	\$3,500
\$10 American Eagle	\$1,250	\$2,500	\$1,000	\$3,000	\$3,500
\$25 American Eagle	\$1,500	\$3,000	\$1,500	\$3,500	\$5,000
\$50 American Eagle	\$2,000	\$4,000	\$2,000	\$5,000	\$7,500

Mint Error News Price Guide

Indents



An indent error occurs when two blanks are fed inadvertently into the same collar, with one blank partly overlaying on top of the other. When the hammer die strikes this combination, the upper blank will be forced into the lower blank, creating a depression which is shaped similar to the upper blank. A scarce type of indent occurs when a blank intended for one denomination lands on top of a blank from a different denomination.

Denomination	10% - 25% XF	30% - 50% XF	10% - 25% Unc	30% - 50% Unc
Large Cent	\$300	—	—	—
Indian Cent	\$250	\$500	\$400	\$650
Lincoln Cent 1943 Steel	\$100	\$300	\$175	\$500
Lincoln Cent Wheat Ears	\$30	\$75	\$75	\$125
3 Cent Nickel	\$500	\$1,250	\$1,500	\$3,000
Shield Nickel	\$1,000	\$1,500	\$2,000	\$3,000
Liberty Nickel	\$400	\$1,000	\$750	\$1,500
Buffalo Nickel	\$300	\$1,000	—	—
Jefferson Nickel War Time	\$200	\$400	\$400	\$750
Jefferson Nickel	\$10	\$25	\$15	\$30
Barber Dime	\$1,000	\$2,000	\$1,500	\$3,000
Mercury Dime	\$300	\$750	\$500	\$1,500
Roosevelt Dime Silver	\$30	\$60	\$50	\$100
Roosevelt Dime Clad	\$10	\$20	\$15	\$30
Washington Quarter Silver	\$100	\$200	\$150	\$300
Washington Quarter Clad	\$25	\$50	\$35	\$100
State Quarter	N/A	N/A	\$200	\$350
Kennedy Half Clad	\$150	\$300	\$200	\$400
IKE Dollar	\$350	\$1,000	\$500	\$1,500
SBA Dollar	N/A	N/A	\$250	\$500
Sac Dollar	N/A	N/A	\$400	\$750

Mint Error News Price Guide

Capped Dies



A capped die is caused when a struck coin sticks to the upper hammer die. Once the coin is struck to the die face, the reverse of the struck coin becomes the new die face. When the next blank is fed into the collar and the strike occurs, the reverse design of the adhered struck coin impresses itself into the new blank. This struck coin is a brockage strike. The coin that adhered to the upper die is known as a die cap. This process repeats itself as more coins are struck by the cap. The greater the number of strikes, the higher the cap metal will be pushed around the upper die shaft. Eventually, the cap brakes away from the die in the shape of a thimble.

Denomination	Obverse Cap XF	Obverse Cap Unc	Reverse Cap XF	Reverse Cap Unc
Large Cent	\$12,500	\$15,000	—	—
Indian Cent 1859	\$10,000	\$15,000	—	—
Indian Cent 1860-1864	\$8,500	\$12,500	—	—
Indian Cent 1864-1909	\$6,500	\$10,000	\$5,000	\$7,500
Lincoln Cent 1943 Steel	—	—	—	—
Lincoln Cent Wheat Ears	\$1,000	\$1,500	\$500	\$750
Lincoln Cent Memorial	\$150	\$200	\$50	\$100
2 Cent Piece	\$12,500	\$20,000	\$10,000	\$15,000
3 Cent Nickel	—	—	—	—
Shield Nickel	—	—	—	—
Liberty Nickel	\$12,500	\$20,000	—	—
Buffalo Nickel (1 Known)	—	\$30,000	—	—
Jefferson Nickel War Time	\$10,000	—	—	—
Jefferson Nickel	\$200	\$350	\$150	\$250
Barber Dime	\$12,500	\$15,000	\$7,500	\$10,000
Mercury Dime (2 Known)	\$6,500	\$10,000	—	—
Roosevelt Dime Silver	\$750	\$1,250	\$500	\$750
Roosevelt Dime Clad	\$200	\$400	\$200	\$250
Barber Quarter	\$15,000	\$20,000	—	—
Washington Quarter Silver	\$1,500	\$2,500	\$1,500	\$2,000
Washington Quarter Clad	\$350	\$500	\$250	\$350
State Quarter	N/A	\$1,000	N/A	\$600
Kennedy Half Silver	\$3,000	\$5,000	\$2,000	\$3,000
Kennedy Half Clad	\$2,000	\$3,500	\$1,500	\$2,000
Kennedy Half Bicentennial	\$2,500	\$4,000	\$1,750	\$2,500
IKE Dollar	—	\$20,000	—	—
SBA Dollar	N/A	\$20,000	N/A	\$15,000
Sac Dollar	N/A	\$20,000	N/A	\$15,000

Mint Error News Price Guide

Die Adjustment Strikes



Die adjustment strikes are also known as die trials. This error occurs when a coin is struck from the press with very little pressure. When the press is being set up and adjusted, extremely weak strikes occur as the strike pressure reaches its optimum level. These die trials are destroyed after being struck and are rarely found in circulation.

Denomination	XF/AU	Unc
Indian Cent	\$3,000	\$4,000
Lincoln Cent Wheat Ear	\$200	\$300
Lincoln Cent 1943 Steel	\$750	\$1,500
Lincoln Cent Memorial	\$50	\$75
2 Cent	\$5,000	–
Liberty Nickel	\$3,000	\$5,000
Buffalo Nickel	\$4,000	\$7,500
Jefferson Nickel War Time	\$1,250	\$2,000
Jefferson Nickel	\$75	\$100
Proof Jefferson Nickel	N/A	\$4,000
Barber Dime	\$4,000	\$5,000
Mercury Dime	\$3,500	\$5,000
Roosevelt Dime Silver	\$350	\$500
Roosevelt Dime Clad	\$100	\$125
Seated Quarter	\$10,000	\$15,000
Standing Liberty Quarter	\$15,000	\$20,000
Washington Quarter Silver	\$500	\$750
Washington Quarter Clad (Pre-State)	\$125	\$150
State Quarter	N/A	\$250 +
Walking Liberty Half	\$10,000	\$12,500
Kennedy Half Silver	\$500	\$750
Kennedy Half Clad	\$200	\$250
Proof Kennedy Half 40% Silver	N/A	\$5,000
Proof Kennedy Half Clad	N/A	\$4,000
Morgan Dollar	\$10,000	\$15,000
Peace Dollar	\$10,000	\$15,000
IKE Dollar	\$300	\$400
IKE Dollar Bicentennial	\$350	\$500
SBA Dollar	N/A	\$500
Sac Dollar	N/A	\$1,000

Mint Error News Price Guide

Double Denominations



One of the most expensive, popular, and desired types of errors are the double denominations. This error happens when a coin is struck on a previously struck coin of a smaller denomination. Examples are a cent on a struck dime, and a nickel on a struck cent. The most dramatic are those with considerable design visible from the original strike. There are a few known double denominations with different dates.

Denomination	Struck On	Circulated	AU	Unc
Lincoln Cent Wheat Ears	Mercury Dime	\$6,000	–	–
Lincoln Cent Wheat Ears	Roosevelt Dime	\$4,000	–	–
Lincoln Cent Wheat Ears	Foreign Coin	\$2,000	\$2,500	–
Lincoln Cent Memorial	Roosevelt Dime Silver	\$3,000	\$4,500	\$6,000
Lincoln Cent Memorial	Roosevelt Dime Clad	N/A	N/A	\$500
Lincoln Cent Memorial	Foreign Coin	N/A	600	\$750
Jefferson Nickel	Lincoln Cent Wheat Ears	\$1,500	\$2,000	\$2,500
Jefferson Nickel	Lincoln Cent Memorial	\$500	\$600	\$750
Jefferson Nickel	Foreign Coin	\$1,000	\$1,250	\$1,500
Jefferson Nickel	Roosevelt Dime	\$1,000	\$1,250	\$1,500
Roosevelt Dime Silver	Foreign Coin	\$4,000	\$5,000	\$7,500
Roosevelt Dime Clad	Foreign Coin	\$3,000	\$4,000	\$5,000
Washington Quarter Silver	Lincoln Cent Wheat Ears	\$3,000	\$4,000	\$6,000
Washington Quarter Silver	Lincoln Cent Memorial	\$2,500	\$3,000	\$3,500
Washington Quarter Silver	Foreign Coin	\$2,500	\$3,000	\$3,500
Washington Quarter Silver	Jefferson Nickel	\$3,000	\$4,000	\$6,000
Washington Quarter Silver	Roosevelt Dime Silver	\$2,500	\$3,000	\$3,500
Washington Quarter Clad	Lincoln Cent Memorial	\$2,500	\$3,000	\$3,500
Washington Quarter Clad	Foreign Coin	\$2,000	\$2,500	\$3,000
Washington Quarter Clad	Jefferson Nickel	\$2,500	\$3,000	\$3,500
Washington Quarter Clad	Roosevelt Dime Clad	\$2,000	\$2,500	\$3,000
State Quarter	Jefferson Nickel	N/A	\$5,000	\$6,000
State Quarter (Extremely Rare)	Any Other Denomination	N/A	\$10,000 +	–
Kennedy Half (Extremely Rare)	Any Denomination	–	–	–
IKE Dollar (Extremely Rare)	Any Denomination	–	–	–
Sac Dollar	Maryland State Quarter	N/A	\$4,500	\$5,500

Mint Error News Price Guide

Brockages



A brockage error can only occur when there are two coins involved. One of the coins involved will always be a struck coin which has not ejected properly. That struck coin will find its way back between the dies and will be struck next to a blank planchet which was fed into the collar. The image of that first struck coin will be impressed into that side of the blank planchet. The result will be a second coin which has images of the first coin impressed into it. Those images will be pressed into the coin and the image will be in reverse. This incuse sunken image is known as a brockage.

Denomination	50% Brockage XF	100% Brockage XF	50% Brockage Unc	100% Brockage Unc
Large Cent	\$600	\$1,000	\$3,000	–
Indian Cent	\$500	\$1,250	\$1,500	\$4,000
Lincoln Cent 1943 Steel	\$350	\$500	\$650	\$1,000
Lincoln Cent Wheat Ears	\$125	\$200	\$200	\$350
3 Cent Nickel	\$1,250	\$2,000	\$3,500	\$5,000
3 Cent Silver	\$2,000	\$3,000	\$3,000	\$6,000
Shield Nickel	\$1,500	\$2,500	\$3,500	–
Liberty Nickel	\$1,250	\$2,250	\$2,000	–
Buffalo Nickel	\$2,000	–	–	–
Jefferson Nickel War Time	\$250	\$750	\$750	–
Jefferson Nickel	\$50	\$75	\$50	\$150
Barber Dime	\$2,500	\$3,500	\$5,000	\$7,500
Mercury Dime	\$1,000	\$2,000	\$1,500	\$4,000
Roosevelt Dime Silver	\$100	\$200	\$150	\$250
Roosevelt Dime Clad	\$50	\$100	\$75	\$150
Washington Quarter Silver	\$200	\$500	\$500	\$1,000
Washington Quarter Clad	\$75	\$150	\$150	\$250
State Quarter	N/A	N/A	\$750	\$1,500
Kennedy Half Clad	N/A	N/A	\$650	\$1,500
IKE Dollar	\$1,500	\$2,000	\$3,000	\$5,000
SBA Dollar	N/A	N/A	\$500	\$1,500
Sac Dollar	N/A	N/A	\$1,500	–

Mint Error News Price Guide

Double & Multiple Strikes



When a blank planchet is struck by the dies, the normal procedure is for the feeders to eject the struck coin out of the collar and into a chute. If there is a malfunction and the struck coin isn't ejected, it may receive a second or third strike by the dies. A multiple struck coin can happen in many ways and have many combinations of errors.

Denomination	XF/AU	Unc
Large Cent	\$1,000	–
Indian Cent	\$600	\$1,000
Lincoln Cent 1930 and Earlier	\$850	\$1,500
Lincoln Cent 1943 Steel	\$400	\$1,000
Proof Lincoln Cent	N/A	\$4,000
3 Cent Nickel	\$2,000	\$3,500
Liberty Nickel	\$4,000	\$10,000
Buffalo Nickel	\$6,000	\$10,000
Jefferson Nickel War Time	\$750	\$2,000
Proof Jefferson Nickel	N/A	\$6,000
Barber Dime	\$4,000	\$10,000
Mercury Dime	\$3,500	\$8,500
Proof Clad Dime	N/A	\$6,000
Standing Liberty Quarter	\$12,500	\$20,000
Washington Quarter Silver	\$200	\$350
State Quarter	N/A	\$350 – \$750
Proof Clad Quarter	N/A	\$7,500
Walking Liberty Half	\$7,500	\$12,500
Franklin Half	\$5,000	\$10,000
Kennedy Half Silver	\$1,500	\$2,500
Kennedy Half Clad	N/A	\$750
Proof Kennedy Half Clad	N/A	\$7,500
Morgan Dollar	\$12,500	\$20,000
Peace Dollar	\$15,000	\$25,000
IKE Dollar	\$2,000	\$3,000
SBA Dollar	N/A	\$1,000 – \$2,500
Sac Dollar	N/A	\$1,500 – \$3,000

Mint Error News Price Guide

Off-Center Strikes



Off-center coins are one of the most common and best known types of errors. This happens when a blank which is supposed to be fed into the press, lands in the collar improperly. When this occurs only part of the blank is between the upper and lower dies. When the dies strike the blank, only that part will be struck with a design.

Denomination	10% - 15% XF/AU	25% - 60% XF/AU	10% - 15% Unc	25% - 60% Unc
Large Cent	\$400	\$2,500	\$1,000	\$7,500
Flying Eagle Cent (1857 – 1858)	\$2,500	\$10,000	\$5,000	\$15,000
Indian Cent	\$100	\$400	\$200	\$600
Lincoln Cent 1930 and Earlier	\$75	\$300	\$150	\$750
Lincoln Cent 1943 Steel	\$40	\$250	\$100	\$500
Proof Lincoln Cent	N/A	N/A	\$1,500	\$3,000
3 Cent Nickel	\$300	\$1,500	\$600	\$3,500
3 Cent Silver	\$1,000	\$5,000	\$2,000	–
Shield Nickel	\$750	\$2,500	\$1,000	\$7,500
Liberty Nickel	\$250	\$1,000	\$500	\$2,500
Buffalo Nickel	\$250	\$750	\$400	\$1,500
Jefferson Nickel War Time	\$100	\$500	\$200	\$1,000
Proof Jefferson Nickel	N/A	N/A	\$2,000	\$5,000
Seated Half Dime Legend	\$3,000	\$7,500	\$5,000	\$15,000
Seated Dime Legend	\$2,000	\$7,000	\$3,500	\$10,000
Barber Dime	\$300	\$1,500	\$500	\$2,500
Mercury Dime	\$100	\$750	\$150	\$1,250
Proof Clad Dime	N/A	N/A	\$2,500	\$5,000
Barber Quarter	\$1,500	\$5,000	\$2,500	\$10,000
Standing Liberty Quarter	\$5,000	–	\$15,000	–
Washington Quarter Silver	\$50	\$100	\$75	\$150
State Quarter	N/A	N/A	\$75	\$300
Proof Clad Quarter	N/A	N/A	\$3,000	\$6,000
Barber Half	\$3,000	\$8,500	\$5,000	–
Walking Liberty Half	\$4,000	\$12,500	\$7,500	–
Franklin Half	\$2,500	\$4,000	\$3,500	\$6,000
Kennedy Half Silver	\$100	\$500	\$250	\$1,000
Kennedy Half Clad	\$60	\$250	\$100	\$400
Proof Clad Half	N/A	N/A	\$4,000	\$7,500
Morgan Dollar	\$3,000	\$13,500	\$7,500	\$20,000
Peace Dollar	\$7,500	\$15,000	\$8,500	\$30,000
IKE Dollar	\$125	\$1,250	\$150	\$2,000
SBA Dollar	N/A	N/A	\$100	\$500
Sac Dollar	N/A	N/A	\$1,000	\$3,500

Mint Error News Price Guide

Off-Metals



Off-metal and wrong planchet errors occur when a correctly made blank from one denomination is accidentally fed into a press for another denomination. Examples are a nickel struck on a cent planchet and a cent struck on a dime planchet. The coin struck on an incorrect blank will weigh exactly what the denomination of that blank would have been. An even more dramatic wrong planchet error is a coin struck on a previously struck coin of a different metal.

Denomination	Off-Metal Planchet	Circulated	AU	Unc	Choice Unc – Gem
Indian Cent	Foreign Planchet	\$1,000	\$1,500	\$3,000	\$5,000
Indian Cent	Dime Planchet	\$7,500	\$12,500	–	–
Lincoln Cent Before 1919	Dime Planchet	\$4,000	\$6,500	\$10,000	–
Lincoln Cent Before 1919	Foreign Planchet	\$1,500	\$3,000	\$6,000	–
Lincoln Cent 1919 – 1940	Dime Planchet	\$2,000	\$2,500	\$4,000	\$6,000
Lincoln Cent 1919 – 1940	Foreign Planchet	\$750	\$1,250	\$2,000	\$2,500
Lincoln Cent 1943 Steel	Dime Planchet	\$1,500	\$2,500	\$3,500	\$4,500
Lincoln Cent 1943 Transitional	Copper Cent Planchet	\$40,000 +	\$60,000 +	\$85,000 +	\$100,000 +
Lincoln Cent 1944 Transitional	Steel Cent Planchet	\$7,500	\$12,500	\$17,500	\$25,000
Lincoln Cent Wheat Ears (1941-1964)	Dime Planchet	\$500	\$600	\$1,000	\$1,500
Lincoln Cent 1965 and Later	Dime Planchet	\$125	\$150	\$200	\$350
Lincoln Cent 1964 Transitional	Clad Dime Planchet	\$2,500	\$4,000	\$5,000	\$6,500
Lincoln Cent 1965 Transitional	Silver Dime Planchet	\$2,750	\$4,500	\$6,000	\$7,500
Shield Nickel	Foreign Planchet	\$7,500	\$12,500	–	–
Shield Nickel	Cent Planchet	\$6,000	\$12,500	\$15,000	–
Liberty Nickel	Foreign Planchet	\$400	\$750	\$1,250	\$2,000
Liberty Nickel	Cent Planchet	\$2,000	\$3,000	\$6,000	\$7,500
Buffalo Nickel	Foreign Planchet	\$2,500	\$6,000	\$10,000	–
Buffalo Nickel	Cent Planchet	\$2,000	\$4,000	\$6,000	\$8,000
Jefferson Nickel Before 1950	Cent Planchet	\$250	\$500	\$750	\$1,000
Jefferson Nickel 1950 and Later	Cent Planchet	\$125	\$150	\$200	\$250
Jefferson Nickel 1943	Steel Cent Planchet	\$1,000	\$2,000	\$3,000	\$5,000
Jefferson Nickel 1964 and Earlier	Silver Dime Planchet	\$200	\$300	\$350	\$400
Jefferson Nickel 1965 and Later	Clad Dime Planchet	\$150	\$200	\$225	\$250
Roosevelt Dime Silver	Foreign Planchet	\$2,000	\$2,500	\$3,000	\$3,500
Roosevelt Dime Clad	Foreign Planchet	\$1,500	\$2,000	\$2,250	\$2,500
Roosevelt Dime 1964 Transitional	Clad Dime Planchet	\$5,000	\$6,500	\$7,500	\$8,500
Roosevelt Dime 1965 Transitional	Silver Dime Planchet	\$5,000	\$6,500	\$7,500	\$8,500
Washington Quarter Silver	Cent Planchet	\$300	\$400	\$500	\$750
Washington Quarter Silver	Nickel Planchet	\$300	\$400	\$500	\$600
Washington Quarter Clad	Cent Planchet	\$250	\$300	\$400	\$500
Washington Quarter Clad	Nickel Planchet	\$100	\$150	\$200	\$250
Washington Quarter	Silver Dime Planchet	\$300	\$400	\$500	\$650
Washington Quarter	Clad Dime Planchet	\$250	\$300	\$350	\$400
Washington Quarter 1964 Transitional	Clad Quarter Planchet	\$5,000	\$6,500	\$7,500	\$8,500
Washington Quarter 1965 Transitional	Silver Quarter Planchet	\$5,000	\$6,500	\$7,500	\$8,500
State Quarter	Cent Planchet	N/A	\$6,500	\$7,500	\$8,000
Delaware State Quarter	Nickel Planchet	N/A	\$500	\$650	\$750
All Other State Quarters	Nickel Planchet	N/A	\$1,000	\$1,250	\$1,500
State Quarter	Dime Planchet	N/A	\$5,000	\$5,500	\$6,000
Walking Half	Quarter Planchet	\$12,500	\$15,000	\$17,500	\$22,500
Walking Half	Foreign Planchet	\$10,000	\$12,500	\$17,500	\$20,000
Franklin Half	Cent Planchet	\$3,000	\$4,000	\$5,000	\$6,000
Franklin Half	Nickel Planchet	\$3,000	\$4,000	\$5,000	\$6,000
Franklin Half	Dime Planchet	\$3,500	\$4,500	\$5,500	\$6,500
Franklin Half	Quarter Planchet	\$600	\$750	\$1,000	\$1,250
Kennedy Half Silver 1964	Cent Planchet	\$1,000	\$1,250	\$1,500	\$2,000
Kennedy Half Silver 1964	Nickel Planchet	\$1,000	\$1,250	\$1,500	\$2,000
Kennedy Half Silver 1964	Dime Planchet	\$1,000	\$1,250	\$2,000	\$2,500
Kennedy Half Silver 1964	Quarter Planchet	\$400	\$500	\$600	\$750
Kennedy Half Clad	Cent Planchet	\$750	\$850	\$1,000	\$1,500
Kennedy Half Clad	Nickel Planchet	\$750	\$850	\$1,000	\$1,250
Kennedy Half Clad	Dime Planchet	\$750	\$850	\$1,000	\$1,400
Kennedy Half Clad	Quarter Planchet	\$350	\$400	\$450	\$500
Kennedy Half 1964 Transitional	Clad Half Planchet	\$5,000	\$6,000	\$7,000	\$9,000
Kennedy Half 1965 Transitional	Silver Half Planchet	\$5,000	\$6,500	\$7,500	\$10,000
Kennedy Half 1964 Transitional	Clad Quarter Planchet	\$5,000	\$6,000	\$7,500	\$8,500
Kennedy Half 1965 Transitional	Silver Quarter Planchet	\$6,000	\$7,500	\$8,000	\$9,000
Ike Dollar	Cent Planchet	\$3,000	\$3,750	\$5,000	\$6,000
Ike Dollar	Nickel Planchet	\$3,000	\$3,500	\$5,000	\$6,000
Ike Dollar	Dime Planchet	\$3,250	\$3,750	\$5,500	\$6,500
Ike Dollar	Quarter Planchet	\$2,750	\$3,000	\$4,000	\$4,500
Ike Dollar	Half Planchet	\$1,600	\$1,750	\$2,000	\$2,500
Ike Dollar	Foreign Planchet	\$900	\$1,000	\$1,250	\$1,500
Ike Dollar Transitional	40% Silver Planchet	\$2,750	\$3,000	\$3,500	\$4,000
SBA Dollar	Cent Planchet	N/A	\$1,750	\$2,250	\$3,000
SBA Dollar	Nickel Planchet	N/A	\$6,000	\$7,000	\$8,000
SBA Dollar	Dime Planchet	N/A	\$6,000	\$7,000	\$8,000
SBA Dollar	Quarter Planchet	N/A	\$600	\$850	\$1,000
Sac Dollar	Cent Planchet	N/A	\$8,000	\$9,000	\$10,000
Sac Dollar	Nickel Planchet	N/A	\$7,500	\$8,000	\$9,000
Sac Dollar	Dime Planchet	N/A	\$8,000	\$9,000	\$10,000
Sac Dollar	Quarter Planchet	N/A	\$1,500	\$2,000	\$2,500

MINTERRORNEWS™

Exclusive Discounts

Good for purchases on-line, eBay and at coin shows!

alscoins.com



\$10 off a purchase of a mint error valued at \$100 or more from Al's Coins.

Offer valid on purchases made from alscoins.com, eBay and at coin shows. This offer is good for any purchase made in the year 2005. One coupon per purchase. This coupon can not be used in conjunction with any other offer.

errorcointrader.com



\$20 off a purchase of a mint error valued at \$200 or more from Error Coin Trader.

Offer valid on purchases made from errorcointrader.com, eBay and at coin shows. This offer is good for any purchase made in the year 2005. One coupon per purchase. This coupon can not be used in conjunction with any other offer.

mikebyers.com



\$250 off a purchase of a mint error valued at \$2,500 or more from Mike Byers.

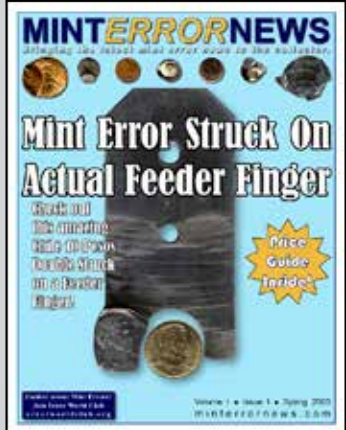
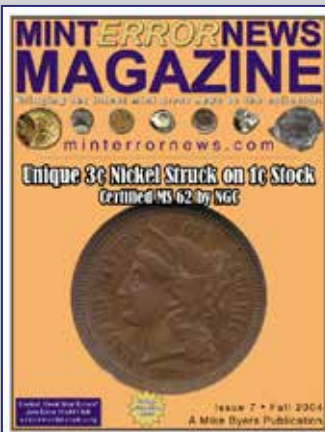
Offer valid on purchases made from mikebyers.com, eBay and at coin shows. This offer is good for any purchase made in the year 2005. One coupon per purchase. This coupon can not be used in conjunction with any other offer.

MINT ERROR NEWS MAGAZINE

Bringing the latest mint error news to the collector.

Issues of Mint Error News Magazine are available for you to read online at:
minterrornews.com

Mike Byers is the Publisher and Editor of Mint Error News Magazine



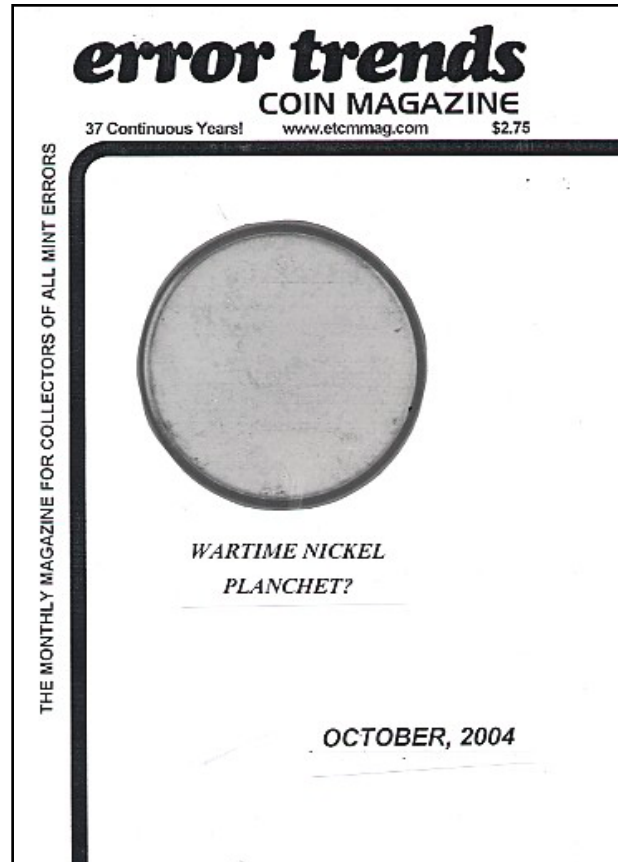
error trends

COIN MAGAZINE

Dedicated to serving the error coin hobby.

- Error coins
- Error Coin Trend Prices (Eight illustrated pages)
- Mistakes
- Mis-strikes
- Off-center errors
- Brockages
- Partial Collars
- Die Caps
- Cuds
- Missing Clad Layers

... and more!



Subscribe to Error Trends Coin Magazine

error trends PO Box 158
COIN MAGAZINE Oceanside NY 11572-0158

New
 Renewal

Dear Sirs,
Please enter my subscription to **error trends**
COIN MAGAZINE as follows:

1 Year: \$15.00 2 Years: \$28.00 3 Years: \$40.00
 Single Sample Copy \$2.75 ppd.

NAME _____
ADDRESS _____
CITY _____ STATE _____ ZIP _____ + _____

(Be sure to add "zip + four" zip code to assure more rapid mail delivery)

Please make all checks payable to Error Trends Coin Magazine or "ETCM". All payments from other countries in "US Funds" only. Additional postage charges required for other countries. Do not send cash through the mail. Thank you.



Visit www.HeritageCoin.com for your **ERROR COIN RESEARCH** **FREE MEMBERSHIP!**

These are only a sample of the thousands of error coins Heritage has handled. Consign your error coins today to the next Heritage Sale.

Look up these error coins in our Permanent Auction Archives for descriptions and full-color, enlargeable images:



Visit the HeritageCoin.com website today
Easy to join
Free membership
Significant research tools
Easy to bid
Easy to buy
Winner of the
NLG's Best Commercial
Website Award!

- A.** 2003 ANA National Money Show, lot 6963
1919 Quarter
Struck 50% Off Center
XF45 PCGS
REALIZED \$15,525
- B.** 2002 September Long Beach Sale, lot 9648
1999 SBA Dollar
Multiple Strike, Reeded Edge
MS65 PCGS
REALIZED \$6,900
- C.** 2002 New York Sale, lot 7290
1999 Cent
Die Cap With Second Coin Bonded
MS64 Red Uncertified
REALIZED \$920
- D.** 2002 February Long Beach Sale, lot 7300
Undated Struck Through
Capped Die Indian Cent
MS64 Brown PCGS
REALIZED \$1,265
- E.** 2002 FUN Sale, lot 9040
1963 Half Dollar
Split Planchet
AU58 Uncertified
REALIZED \$1,610
- F.** 2001 ANA Sale, lot 8658
1963 Half Dollar
Double Struck, Indented by a Cent Planchet
MS66 PCGS
REALIZED \$20,125
- G.** 2001 ANA Sale, lot 8651
1999-P Dime
Bonded Strike, Struck More Than 10 Times
MS64 Uncertified
REALIZED \$2,300
- H.** 2001 ANA Sale, lot 8657
1999 Mated Pair of Georgia Statehood Quarters
Partial Collar, Indent and Stretch Strike, Indent
MS64 Uncertified
REALIZED \$2,415
- I.** 2001 February Long Beach Sale, lot 7497
1912 Quarter Eagle
Struck 5% Off Center
MS64 NGC
REALIZED \$4,370

America's #1 Numismatic Auctioneer
HERITAGE
Numismatic Auctions, Inc.



Steve Ivy
Jim Halberin
Greg Rohan

Heritage Plaza, 100 Highland Park Village, 2nd Floor • Dallas, Texas 75205-2788
1-800-US COINS (800-872-6467) • 214-528-3500 • FAX: 214-443-8425
www.HeritageCoin.com • e-mail: Bids@HeritageCoin.com
www.CurrencyAuction.com • e-mail: Notes@CurrencyAuction.com



Numismatics ...Today

News, Features and Resources



Home US Coins World Coins Ancients Currency Events Resources



NUMISMATIC NEWS & RESOURCES

The CoinLink Numismatic Directory will launch with our 10th anniversary edition of CoinLink on January 1, 2005. However, we have started accepting FREE Submissions now.

If you have a web site and want to get listed - Add your Site Here!

New site features include an Articles Database, interactive Polls, a “What’s New” section highlighting everything new in the marketplace, and an expanded news section.

We are committed to providing the latest information with unequaled access to numismatic resources to make your coin collecting more enjoyable. Thanks for being a part of CoinLink.

uspatterns.com

The Society of U.S. Pattern Collectors is dedicated to the study of many of the rarest coins struck at the U.S. Mint: patterns, die trials and experimental pieces.

Saul Teichman's Want List

Saul.Teichman@ey.com

I am looking for the following off-metal errors:

Wartime Nickel on a Copper Cent planchet.
Bicentennial Half on a Cent planchet.
Bicentennial Half on a Dime planchet.
Kennedy Half on a Sacagawea Dollar planchet - if it exists.
Ike Dollar on a Cent planchet.

Ike Dollar on a Nickel 5 Cent planchet.
Ike Dollar on a Dime planchet.
Ike Dollar on a Quarter planchet.
Sacagawea Dollar on a Cent planchet.
Sacagawea Dollar on a Nickel planchet.
Sacagawea Dollar on a Dime planchet - if it exists.

Unique Obverse Die Cap

Although described as a broadstruck Brockage, this 1873 Seated Half Dollar is actually an obverse die cap. It is the size of a Morgan Dollar. The reverse has a brockage depicting the obverse design. This cap struck so many blanks that the reverse brockage expanded to the size of a dollar.

Major mint errors in the Seated Half Dollar series are extremely rare. This die cap is also dated 1873 with arrows which makes it that much more incredible. This is the only known Seated Half Dollar die cap.



Spectacular 1864 2¢ Obverse Die Cap With 2 Obverse Brockages

Major mint errors in the 2¢ series are very rare. This super deep obverse die cap came from a major mint error collection that was assembled over 30 years ago. Along with it were two obverse brockages. This 3 piece set is in original condition and the toning matches.

It is possible that these two brockages were struck from this specific obverse die cap. Since this obverse die cap struck many coins, it continues to become higher as it wrapped around the obverse die. During this process of expansion, the reverse becomes more distorted as it strikes blank planchets.



1942 Walking Liberty Half Dollar Struck On A Silver Quarter Planchet

There are only a handful of off-metal Walking Liberty Half Dollars known. This mint error is well centered with the date showing and is in gem mint state condition. This is a classic mint error and is considered one of the all-time rarities.



Unique 1999 SBA Dollar Struck on an Aluminum Feeder Finger

This 1999 SBA Dollar was struck on a huge chunk of aluminum scrap. It is actually struck on the tip of an aluminum feeder finger which is used in the production of coins at the U.S. Mint. It is a very visual and dramatic major mint error and is the only known SBA Dollar struck on an aluminum feeder finger.



Die Trial Splashers Just Discovered

by Saul Teichman (uspatterns.com)



JA1858-1/P3161

This is a complete reverse die trial, in white metal, of the laurel wreath design with groups of 5 leaves as used on J191/P233, J202/P245, and J208/P253 & P259.

The illustrated example is the only one confirmed to exist.



JA1863-1/P3257

This is an obverse die trial, in white metal, for the pattern design with the motto "God Our Trust" as used on J312-4/P377-9 and J315/P380 but lacking the date.

The illustrated example is the only one confirmed to exist.



JA1838-6/P3064

This is a reverse die trial, in white metal, for the regular no motto design, with small letters, used from 1838-1840.

The illustrated example is the only one confirmed to exist.



JA1838-1/P3049

This is an obverse die trial without date, in white metal, of the regular seated liberty design of 1837 but with a single star added between liberty's head and the pole.

Because of this, it is listed as an 1838 trial and an intermediate between the no stars design of 1837 and the with stars design of 1838 and later.

2 examples are confirmed and both are illustrated. The example above was part of the materials given to the Library Company of Philadelphia by Maxwell Whiteman. It is listed as inventory #12.



JA1836-1/P3019

This is an unfinished obverse die trial in lead, on an octagonal planchet, of the 1836 Capped bust design J57/P60. "Liberty" has not yet been inscribed onto the cap.

Two examples are confirmed. The illustrated piece above is ex Woodside, Woodin-1914 ANS exhibit, Kosoff 1948, Ford, Empire Coin, Cox-Stacks 3/62, Mint collection.



JA1857-3/P3140

This is an obverse die trial, in white metal, for the 1857 design used on J189/P226 complete except that the date is missing.

Only 4 examples are known, all are illustrated. The two in color are in the Library Company of Philadelphia. The small planchet piece is inventory #28 and the larger planchet example is inventory #30.

Photos courtesy of Sarasota Rare Coin Galleries.

Unique 1981 Dime Cap Overstruck on a 1981 Cent Cap

This Lincoln Cent was a deep obverse cap that struck many Lincoln Cents. It took the form of the obverse die and wrapped around it. You can see the Lincoln design on the inside wall of the obverse. The lettering on the reverse, which is now flattened and enlarged, wrapped around the obverse die and brockaged many cents.

It was then struck by a Roosevelt Dime obverse die. The reverse of this strike was an incuse brockage with a Dime design since it rested on a struck Dime. It then became an obverse Dime cap, taking the shape of the obverse Dime die, which deepened this dual denomination dual cap even more.

The obverse has a perfect impression of the obverse design of a Roosevelt Dime, which is overstruck on the obverse of the Lincoln cap. The reverse is an incuse brockage from the obverse of another Dime, which then spread out, creating counterbrockages on the obverse of more Dimes.

There are a few known cap die coins on other planchets and even one that is an off-metal.

This piece is unique because it first was a Lincoln Cent obverse cap, then overstruck by a Dime die and subsequently became a Dime cap over a struck Cent cap in copper.

Upon examination of this unique discovery coin, you can see the design of the Dime cap on both sides blend into the design of the original Cent cap, creating an even higher cap with the detail of both denominations visible. This unique dual denomination dual cap off-metal is in Gem Mint State condition with blazing red color on the inside of the cap. This piece would be the highlight of any Major Mint Error Collection. It is one of the most spectacular and dramatic errors I have ever handled!



1861 Indian Head Cent Deep Obverse Die Cap

There are only a few known Indian Head Cent die caps. This is an incredible deep obverse die cap. It is struck on the 1860-1864 Cu-Ni planchet. This die cap is in gem mint state condition and would be the highlight of any mint error collection.





SUBMIT YOUR ARTICLE TO MINT ERROR NEWS MAGAZINE

Please make sure you have copyrights to any content that you submit. Your article may be subject to revision. If you include images with your article, please use a minimum resolution of 300 DPI.

Please submit all content to:

editor@minterrornews.com

Harry E. Jones

Rare Coins & Currency

Sell Harry Your Mistakes!!

Leading Dealer in Error Currency For Over 30 Years. Buying and Selling the Finest in Error Currency. Especially Want Errors on National Currency. Also Buying Uncut Sheets of Nationals Large and Small.

7379 Pearl Rd.
Cleveland, OH 44130

440-234-3330

LM ANA PNG PCDA



Rich Schemmer

specializing in rare error coins for the collector

richerrors.com

Richerrors@aol.com



COINLINK



Numismatic News & Rare Coin Web Site Directory

coinlink.com

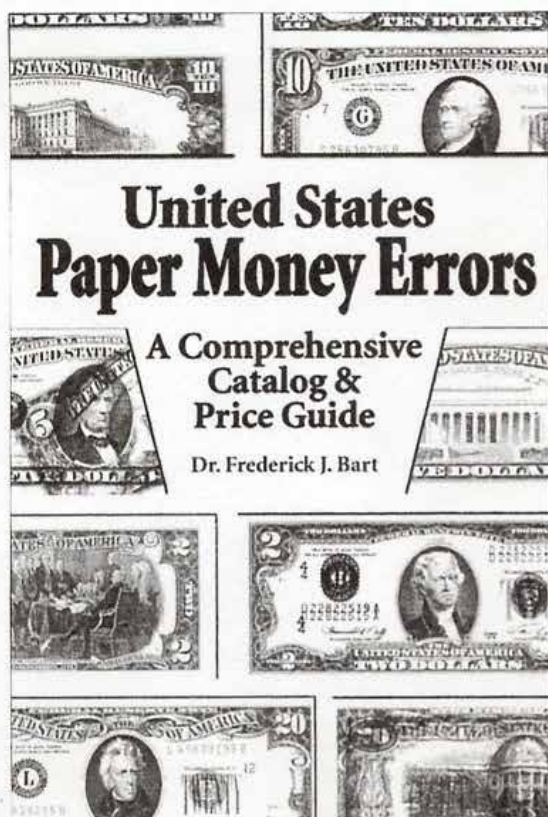
The LONG AWAITED SECOND EDITION of

United States Paper Money Errors: A Comprehensive Catalog & Price Guide

by **FREDERICK J. BART**

foreword by **HARRY E. JONES**

Will be **READY to SHIP** in a **COUPLE** of **WEEKS ...RESERVE YOUR COPY** now
published by **KRAUSE PUBLICATIONS**
available from Krause Publications, their distributors, your supplier, or directly from the author



- **COMPREHENSIVE INFORMATION on US PAPER MONEY ERRORS**
ranging from **DOUBLE DENOMINATIONS** to **INK SMEARS**
- **COMPLETELY RE-WRITTEN**
- **UP-to-DATE PRICE GUIDE**
in **THREE GRADES**
- **550 PHOTOGRAPHS** (b & w) of **SMALL SIZE & LARGE SIZE ERRORS**
- **256 PAGES**, 6" x 9", softbound
- **HISTORICAL PHOTOGRAPHS**
- **BEHIND-the-SCENES** peeks at **"INSIGHTS and INCIDENTS"**
- **SUITED for both the ADVANCED COLLECTOR and the BEGINNER**
- **DATA for the RESEARCHER, CATALOGUER, and DEALER**

-----ORDER FORM-----

I wish to reserve--and am enclosing payment for--one copy of *United States Paper Money Errors* at \$24.95. My check will not be cashed until the book is ready to ship. I would like the book:

- autographed by the author
 inscribed, as indicated below, and autographed

Please mail the book to:

BART, Inc. ● PO Box 2 ● Roseville, MI 48066 ● 586.979.3400 ● BartIncCor@aol.com

Fred Weinberg & Co.

Dealer in Major Mint Error Coins & Currency



fredweinberg.com



BUYING MAJOR ERROR COINS & CURRENCY

If you have a single major mint error coin, either a recent issue or an older type coin, or 1,000 Off-Center Cents, please contact us. We stock over 60,000 Major Mint Error Coins and constantly need to purchase Major Error Coins for our clientele (please note that we do not deal in or buy Die Varieties, Damaged Coins, Doubled Dies, Filled Dies, or Die Cracks).

We do buy Major Mint Errors - such as Off-Center, Off-Metals, Double Strikes, Clad Layers missing, Die Caps, Double Denomination, etc.

Because of the many differences in each Error Coin we request that you send scans of your coin(s) to us for our examination and firm offer.

Postal Correspondence:

Telephone/Fax:

16311 Ventura Blvd.

Suite #1298

Encino, California 91436

Phone: (818) 986-3733

Toll-free: (800) 338-6533

Fax: (818) 986-2153

e-mail: fred@fredweinberg.com

fredweinberg.com

Robert L. Astrich

P.O. Box 981

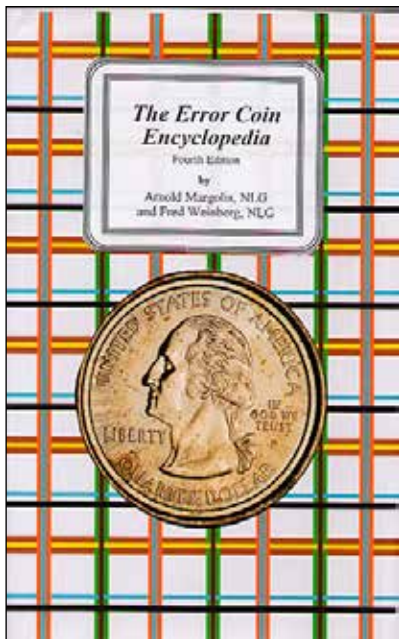
Hempstead, TX 77445

Office: (979) 826-2221 Fax: (979)826-6566

I BUY AND SELL MAJOR ERROR COINS, ALL U.S. COINS & EARLY FOREIGN CROWNS & GOLD, HIGH GRADE CERTIFIED MORGAN & PEACE DOLLARS, U.S. DATED GOLD & HI RELIEFS, EARLY 1936-42 PROOF SETS CERTIFIED & RAW.

I AM A STRONG BUYER OF ORIGINAL EARLY MINT SETS 1947-58, AND PAY STRONG PRICES FOR ORIGINAL ROLLS OF CENTS THRU HALF DOLLARS 1954 & EARLIER. I ALSO BUY ORIGINAL BU DOLLAR ROLLS. I AM A FULL TIME USER OF THE CERTIFIED COIN EXCHANGE AND THE COIN NET SYSTEMS. I AM AN ACTIVE BUYER OF LARGE COIN COLLECTIONS.

ALL TRANSACTIONS WILL REMAIN CONFIDENTIAL.



Entirely rewritten edition. 495 pages.
Hard Cover 4th Edition: \$39.95 postpaid

Available from:

**Arnie Margolis
&
Fred Weinberg**

Silver Towne L.P.

50 years of quality Tradition: Make new friends
but keep the old - one is silver the other is gold.

silvertowne.com

100 GREATEST
U.S. COINS



New Book - 100 Greatest U.S. Coins
by Jeff Garrett and Ron Guth
Order your copy today!
CoinFacts.com

Independent Coin Grading Company

A Company Formed By Some Of The Industry's Top Graders.



KEITH LOVE, FOUNDER AND CEO

Only ICG offers you all this:

ICG's "No-grade, No-Fee" policy. We charge a \$5 processing fee if we "no grade" a coin.

Intercept Shield, Ultimate protection for your collectibles.

\$1 credit for returning our insert tags, (pre 1950 coins) and a 50¢ credit for all 1950 or later coins.

Quick turnaround times to preserve cash flows.

Sonically sealed, tamper-evident, attractive holder with our SECUREGRAM™ hologram system.

And, most important ... expert, consistent grading by the most respected names in the business.



Photo courtesy of mikebyers.com

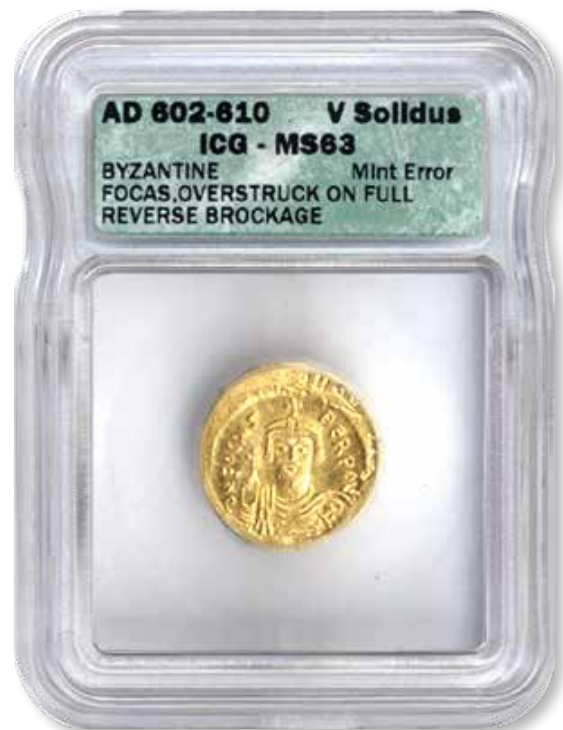


Photo courtesy of mikebyers.com

ICG

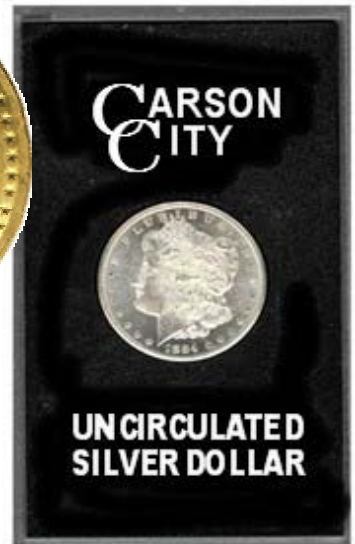
7901 East Belleview Ave., Suite 50
Englewood, CO 80111
877-221-4424 (Toll Free) - 303-221-5524 (Fax)

H
O
M
E
O
F
T
H
E
A
M
A
Z
I
N
G
B
R
O
K
E
N
C
C

NORTHERN NEVADA COIN

www.brokencc.com

*WE BUY & SELL
RARE COINS.
VISIT US ON THE
WEB TO VIEW
OUR
EVER-CHANGING
INVENTORY*



**3655 B RESERCH WAY
CARSON CITY, NV 89706**

1-888-836-8DOLLAR

1-888-836-5527

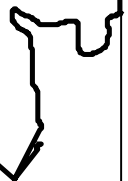
1-775-884-1660



MEMBER



MEMBER
Northern Nevada,
Inc.



ERROR WORLD

Join the *hottest*
Error Coin Club on the Net!

e r r o r w o r l d c l u b . o r g

The Error World on-line coin club exists for the purpose of advancing the knowledge and the field of error coin collecting.

Error World is dedicated to the promotion, discussion and dissemination of facts and ideas about error coinage, both domestic and world-wide.

Error World exists as a vehicle to bring collectors of both foreign and domestic error coinage together in a professional and relaxed atmosphere where they can exchange information, display photos and engage in lively debate about error coinage.

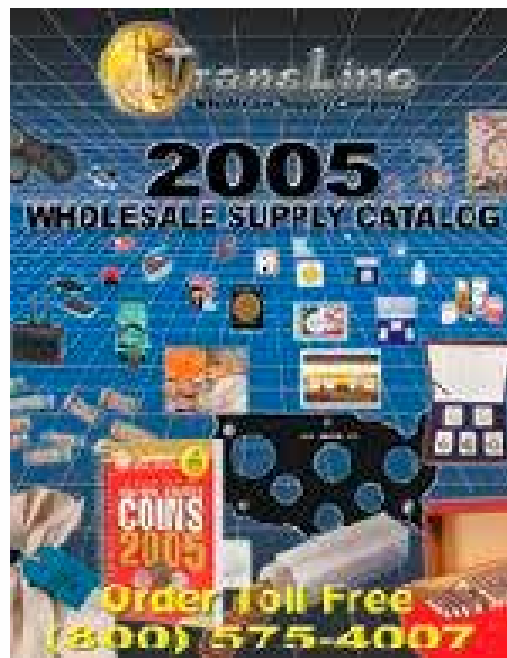
Error World is a non-profit organization with all revenues being put back into the club to provide improved services to the members of the club.

Error World will, from time to time, accept contributions from designated Patrons in the form of contest prizes, and/or cash to be used to defray club expenses.

Error World will, from time to time, attempt to obtain sponsors from the numismatic field who will bring price saving offers to Error World members.

Transline Wholesale Supply Company

Wholesale Only 1-800-575-4007



Bart Crane

translinesupply.com

CALL TOLL FREE: (800) 575-4007

Business Hours

Monday - Friday: 7:30AM - 5:30PM PST



JIM'S COINS & STAMPS
 702 N. Midvale Blvd. B-2
 Madison, WI 53705
 (608) 233-2118

ERROR AUCTIONS

Six per year for 22 years!

YR. Subs. \$8.00, Sample \$2.50

Free Download: www.jimscoins.net

Len Roosmalen



James Essence

Jim's Coins & Stamps - Error Auctions

CLOSES MARCH 31, 2005

- 1) SEND ALL BIDS TO: JIM'S COINS, 702 N. MIDVALE BLVD. B-2, MADISON, WI 53705, OR FAX #608-233-2118, OR PHONE 608-233-2118, OR EMAIL: jimscoins@sbcglobal.net
- 2) THE HIGHEST BIDDER ACKNOWLEDGED BY THE AUCTIONEER SHALL BE THE BUYER. THE AUCTIONEER RESERVES THE RIGHT TO REJECT ANY BID OR WITHDRAW ANY LOT FROM THE SALE. BIDDERS ARE RESPONSIBLE FOR THEIR OWN ERRORS, SO DOUBLE CHECK YOUR BIDS. THE FIRST POSTMARK WINS IN CASE OF A TIE BID.
- 3) ALL SALES ARE FOR CASH AND ARE PAYABLE IMMEDIATELY UPON RECEIPT OF THE INVOICE
- 4) AUCTIONS ARE OPEN TO ALL AND NO DEPOSIT IS REQUIRED OR DESIRED.
- 5) NO UNLIMITED BIDS ARE ACCEPTED. BIDDERS WILL BE AWARDED LOT AT A 10% ADVANCE OVER THE SECOND HIGHEST BID OR AT THE MINIMUM BID (OR ESTIMATE IF NO MINIMUM) IF NO OTHER BIDS ARE RECEIVED.
- 6) ALL ITEMS ARE GUARANTEED GENUINE. BIDDERS MAY RETURN ANY ITEM NOT AS DESCRIBED
- 7) BID EARLY AND BID OFTEN. THANKS! -LEN & JIM

*	1	(1887)	OTHER	DOUBLE WOWSER!!!! 1 PESO GOLD COIN STRUCK 35% OFF CENTER ON MEXICAN 5 CENT SILVER PLANCHET WOW, STUNNING ANAC	AU50	MB	\$1,850.00
	2	1990	\$5	GOLD AMERICAN EAGLE, STRUCK THRU MANY STRINGS 3 X 4mm 9:00 OBVERSE PSGS MS69 DCAM	MS69	MB	\$150.00
	3	1222-54	OTHER	GOLD ANCIENT, JOHN III, DOUBLE STRUCK, AV HYPERPYRON-MAGNESIA NICK SIZE HAMMERED GOLD, ICG	AU55	MB	\$450.00
	4	1921 S	DOLL	TILTED PARTIAL COLLAR LOOKS 3% OFF CENTER PCGS	EF45	MB	\$150.00
*	5	1921	DOLL	STRUCK 8% OFF CENTER 3:00 NICE EXAMPLE SCARCE PCGS	EF45	MB	\$2,150.00
	6	1976	DOLL	8% OFF CENTER 9:00 RARE BICENTENNIAL VAR 2 ANACS	MS60	MB	\$285.00
	7	1974 D	DOLL	STRUCK ON PHILIPPINE 1 PISO PLANCHET SCARCE IN HIGH GRADE NGC	MS66	MB	\$1,650.00
	8	1976 D	DOLL	DOUBLE STRUCK, 2ND 80% OFF CENTER 6:00 DIE STRUCK BOTH SIDES SUPER RARE PCGS	MS61	MB	\$2,750.00
	9	1979 D	DOLL	OBV CLAD LAYER OFF BEFORE STRUCK 6.08 GR NGC	MS64	MB	\$550.00
	10	1979 S	DOLL	REV CLAD LAYER OFF BEFORE STRUCK NICE RED PCGS	MS65	MB	\$595.00
	11	1979 S	DOLL	REVERSE CLAD LAYER OFF BEFORE STRUCK RED PCGS	MS65	MB	\$595.00
	11	1999 P	DOLL	STRUCK 35% OFF CENTER 2:00 SUPER GEM NGC	MS67	MB	\$795.00
*	12	1999 P	DOLL	DOUBLE STRUCK, 2ND 80% OFF CENTER 3:00 UNIFACE REV NGC	MS66	MB	\$1,995.00
	13	N.D.	DOLL	SAC TYPE II PLANCHET NGC	UNC	MB	\$89.00
	14	2001 P	DOLL	SAC STRUCK WITH OBV CLAD LAYER OFF BEFORE STRUCK BRIGHT RED NEAT NGC	MS63	MB	\$895.00
	15	2000 P	DOLL	SAC WITH 25% CURVED CLIP 10:00 PRETTY SCARCE & NEAT	MS66	MB	\$300.00
	16	1986	ASE	OBV 7 REV STRUCK THRU CENTER AND AROUND RIM NGC	MS	MB	\$200.00
	17	N.D.	HALF	TYPE 2 40% SILVER PLANCHET WITH 5% CURVED CLIP + RIM CLIP SCARCE WITHOUT CLIPS PCGS	MS62	MB	\$295.00
	18	1944 D	HALF	OBV STRUCK THRU LOOKS LIKE A SILVER PLUG DEAD CENTER UNUSAL NGC	MS65	MB	\$650.00

*	19	1957	HALF	6% STRAIGHT CLIP 8:00 11.8 GR NGC	MS62	MB	\$260.00
	20	1969 D	HALF	OBV CLAD LAYER MISSING BEFORE STRUCK 147 GRS PCGS	MS62	MB	\$300.00
	21	1964	HALF	TRIPLE CLIPPED 7% CURVED 4:30 + RIM CLIPS AT 7 & 2 ANACS	AU58	MB	\$32.00
*	22	1964	HALF	LARGE RAGGED CLIP 1:00 3/8" WIDE INTO TOP OF HEAD REALLY SCARCE ANACS	MS63	MB	\$65.00
	23	1989 P	HALF	FLIPOVER DOUBLE STRUCK 95% O/C 10:30 DIE STRUCK BOTH SIDES SCARCE NGC	MS63	MB	\$335.00
	24	2001 P	HALF	CAPITOL COMM, STRUCK IN RIM BURR 3:00 REV VERY NICE EXAMPLE NGC	MS69	MB	\$85.00
	25	N.D.	QUAR	STRUCK ON CENT PLANCHET 3.02 GR TINGES OF RE D BROWN NGC	MS63	MB	\$680.00
	26	1956	QUAR	STRUCK ON NICKEL PLANCHET NICE FULL DATE OLDER EXAMPLE PCGS	AU58	MB	\$725.00
	27	1970 D	QUAR	STRUCK ON PHILIPPINE 10c PLANCHET A NICE 2 COUNTRY COIN LOOKS LIKE DIME ANACS	MS60	MB	\$435.00
*	28	N.D.	QUAR	STRUCK 10% OFF CENTER WITH A LGE CUD OVER DATE AREA LOOKS LIKE ND-14 SUPER MULTI NGC	MS64	MB	\$395.00
	29	(1964)	QUAR	UNCENT BROADSTRIKE HEAVILY FROSTED P/L COIN LOOKS PROOF NGC	MS66	MB	\$450.00
	30	N.D.	QUAR	OBV STRUCK THRU CLOTH 12-4 TOWARDS 9:00 WEAVE VISABLE PCGS	AU55	MB	\$425.00
	31	N.D.	QUAR	OBV STRUCK THRU CLOTH ENTIRE OBV NICE WEAVE PATTERN CLAD PCGS	AU58	MB	\$390.00
	32	1998 P	QUAR	DOUBLE STRUCK IN COLLAR REEDED EDGE PCGS	MS64	MB	\$149.00
*	33	1999 P	QUAR	STATE TYPE, DUBL STRK DIE CAP, BROCKAGE WASHINGTON REV SUPER SCARCE PCGS	MS66	MB	\$1,250.00
	34	1999 P	QUAR	N.J, DUBL STRUCK, 2ND 85% OFF CENTER 12:30 UNIFACE REV PCGS	MS61	MB	\$485.00
	35	1999 P	QUAR	CT, DUBL STRUCK, 2ND 25% OFF CENTER 2:00 DIE STRK BOTH SIDES SUPER NGC	MS63	MB	\$575.00
	36	2000 P	QUAR	N.H, TRIPLE STRUCK, 2ND & 3RD 25% OFF CENTER 2:00 DIE STRK BOTH SIDES ANACS	MS63	MB	\$550.00
	37	1965-04	DIME	MULTIPLY STRUCK & BROCKAGED BONDED SCRAP WEIGHT 3.9 GRAMS A WOWSER ICG	MS60	MB	\$350.00
	38	N.D.	DIME	BROCKAGED MULTIDTRUCK CUPPED UP REV LIKE A CAP NEAT PCGS	MS66	MB	\$240.00
	39	1917	DIME	STRUCK 10% OFF CENTER 4:00 FULL BANDS LIGHT TONING NEAT NGC	AU58	MB	\$399.00
	40	1883WC	NICK	STRUCK THRU LATE STAGE CAPPED DIE REV NICE ONE ICG	VF20	MB	\$300.00
	41	1883NC	NICK	DOUBLE STUCK IN COLLAR ROTATED BETWEEN STRIKES SUPER DUBL RARE HAVE MADE THEM FOR 120 YEARS NGC	GD4	MB	\$750.00
*	42	N.D.	NICK	BUFFALO STRUCK ON CENT PLANCHET ANACS	VG8	MB	\$2,200.00
*	43	N.D.	NICK	BUFFALO STRUCK 35% OFF CENTER 9:00 STILL A NICE EXAMPLE IN VG NGC	VG8	MB	\$750.00
	44	2000 D	NICK	STRUCK ON 2000 D CENT NICE RED DUBL DENOMINATION NGC	MS66	MB	\$950.00
	45	1972 D	NICK	STRUCK ON CENT PLANCHET RED BROWN ANACS	MS63	MB	\$450.00
	46	1969 D	NICK	STRUCK ON PHILIPPINE 25 SENT PLANCHET 65 GRAINS PCGS	AU50	MB	\$250.00

Check out www.jimcoins.net for full auction!

MINTERRORNEWS™ MUSEUM

Enjoy viewing the major mint errors in our museum. These are exciting and dramatic examples of major mint errors that we wanted to share with our readers.

Liberty Nickel
Struck Off-Center
ANACS VF 30



1915-D Lincoln Cent
Struck 10% Off-Center
NGC MS 64 Brown



1903 Proof Indian Cent
Curved Clip @ 6:00
NGC PF 64 Red



Liberty Head Nickel
100% Brockage Obverse
ANACS



1920 Buffalo Nickel
Struck 30% Off-Center
PCGS MS 64



Denver Mercury Dime
Struck 20% Off-Center
NGC MS 63 FB



1918 Lincoln Cent
10% Ragged End Clip
PCGS MS 63 Red



1921 Morgan Dollar
1/3" Cracked Planchet
PCGS AU 53



2000-P Massachusetts Quarter
Struck on an Elliptical Planchet
PCGS MS 64



2000-P New Hampshire Quarter
Struck on an Elliptical Planchet
PCGS MS 66



1923 Lincoln Cent
5% Indent Obverse
PCGS MS 62 Brown



1914 Lincoln Cent
Broadstruck Out of the Collar
PCGS MS 63 Brown



1917-S Lincoln Cent
Struck 10% Off-Center
NGC MS 62 Brown



1976 Bicentennial Quarter
Struck 90% Off-Center & Brockage Rev
PCGS MS 65



1941 Lincoln Cent
Struck on Thick Brass Planchet
PCGS XF 40



1999-P Connecticut Quarter
40% Obverse Indent
PCGS MS 64



1999-P New Jersey Quarter
85% Obverse Indent
PCGS MS 66



Washington Quarter
Struck on 56% Scrap Planchet
PCGS MS 64



Washington Quarter
Struck on 50% Scrap Planchet
PCGS MS 64



(1976) Bicentennial Kennedy Half Dollar
Die Adjustment Strike
PCGS MS 61



1964 Washington Quarter
20% Brockage & Broadstruck
PCGS MS 64



SBA Dollar
Struck 40% Off-Center
ANACS MS 64



Frequently Asked Questions

What are mated pairs?



Mated pairs involve two individual coins with different errors that were struck together at the same time. Mated pair error combinations can be found in most error types and come in many shapes and sizes. Mated pairs can be overlapped when one of the coins is struck off-center on top of another coin. Another type involves a brockage where a struck coin was perfectly centered on a blank and restruck. Some mated pairs involve a die cap where the cap and brockage coin are discovered together, but this is a scarce find.

The rarest mated pair type involves two die caps (obverse and reverse) where both dies were capped at the same time and both die caps are mated. This last type is extremely rare and there are only a few known examples of mated pairs involving an obverse die cap and reverse die cap. There are several of these mated pairs known on Kennedy Halves including two dated 1976, which is the Bicentennial year. One of the most spectacular mated pairs involve two Barber Dimes, an obverse die cap mated to a reverse die cap and are unique.

Mated pairs can also involve an off-metal where a smaller blank planchet or smaller struck coin was struck on top of a larger coin. This type is extremely rare. The most spectacular pair known is a double struck Franklin Half which was mated to a Lincoln Cent. The Lincoln Cent blank was on top of the obverse of the struck Franklin Half. This pair was then struck together. It is unique.

Frequently Asked Questions

What is an overstrike?



Overstrikes are coins that have been struck over a struck coin. Generally speaking, there are two major types of overstrikes. The first type would be a double denomination (a Lincoln Cent struck over a struck Dime). Although these are overstrikes, they are referred to as double denominations and are known on many denominations of coins from many countries.

The other main type of overstrike is a coin which is struck (either deliberately or as a mint error) on a previously struck coin from a different era and country. In ancient times, it was not uncommon to strike coins over previously struck coins with portraits of earlier Kings. In Colonial times, coins circulating were sometimes struck using other coins that were in circulation, regardless of whether they were from the country striking the coin or from a different country.

A rare example of an overstrike is a 1915 Panama Half Commemorative which was struck in Proof over a cut down St. Gaudens \$20 gold piece. The example shown above is an example of a rare overstrike from Mexico. It is a gold 8 Escudos struck over an earlier type and is listed in Krause as rare. The Panama Half and 8 Escudos were intentional overstrikes. There are also examples of unintentional overstrikes which are classified as mint errors.

Upcoming Coin Shows



Visit Mike Byers at his table.

Jan. 12-16	FUN Show
Feb. 23-26	Long Beach Coin & Collectible Expo
March 4-6	Las Vegas
March 31-April 3	Santa Clara Coin Expo
April 8-10	ANA's National Money Show
May 5-8	Central States
June 1-4	Long Beach Coin & Collectible Expo
July 21-23	Santa Clara Coin Expo
July 26-31	ANA World's Fair of Money
Sept. 21-24	Long Beach Coin & Collectible Expo
Oct. 27-29	Las Vegas Coin Expo
Nov. 16-19	Santa Clara Coin Expo

Karl Stephens

ANA LM 3112

Dealer in World Coins, Patterns & Mint Errors

P.O. Box 3038, Fallbrook, CA 92088
760-731-6138 • FAX: 760-731-9132
www.karlstephensinc.com

MINTERRORNEWS MAGAZINE

Coming in Issue 11

Unique NGC Set of Paraguay Overstrikes



Wanted To Buy: Buffalo Nickel Errors

Large laminations, straight clips, curved clips, off centers, broadstrikes or cuds on any of the following dates: 1925-D, 1926, 1926-D, 1927-S, 1928-D, 1935-D, 1937-S.

Also:

Off centers	1930, 1931-S, 1938-D
Off centers	55% & 70%
Off centers	55% to 75% at 9:00
Misaligned die	10% or more
Reverse cuds	K-3, K-8, K-10
Curved Clips	Obverse - K-1, K-7, K-12

Please describe & price.

Bob Entlich
c/o Stacks
123 W. 57th St.
New York, NY 10019

BYERS NUMISMATIC CORP

MIKEBYERS.COM



The Largest Dealer of the World's Rarest Mint Errors™

U.S. ERRORS • WORLD & ANCIENT ERRORS • DIE TRIALS • CURRENCY ERRORS



We handle the world's finest Major Mint Errors and Numismatic Rarities. Our premier MULTI-MILLION DOLLAR INVENTORY includes only the best, museum quality, world class and exotic U.S. and World Major Mint Errors and Die Trials. Many of our purchases are immediately sold to our customers, and don't even reach our website to be sold, or eBay to be auctioned. Send us your want list, we may have what you're looking for.

MIKE BYERS

P.O. Box 5090, Lake Forest, CA USA 92674

Office: 949-276-7072 • Fax: 949-276-7073

Fed Ex Address only: 1001 Avenida Pico #C 612, San Clemente, CA 92673

E-Mail: mike@mikebyers.com • Website Design: sam@mikebyers.com

Mike Byers, Professional Numismatist since 1978

Byers Numismatic Corp. A California Corporation Since 1980

Mike Byers is a consultant to ANACS for Mint Errors

