

# MINT **ERROR** NEWS<sup>TM</sup> MAGAZINE

Bringing the latest mint error news to the collector.



## Unique Pair of 1806 Draped Bust Quarters Obverse & Reverse Brockages



Excited About Mint Errors?  
Join Error World Club  
[errorworldclub.org](http://errorworldclub.org)



Issue 9 • Spring 2005  
A Mike Byers Publication



# Al's Coins

Dealer in Mint Errors  
and Currency Errors

alscoins.com



**S**pecializing in Mint Errors and Currency Errors for 25 years. Visit my website to see a diverse group of type, modern mint and major currency errors. We also handle regular U.S. and World coins.



I'm a member of CONECA and the American Numismatic Association. I deal with major Mint Error Dealers and have an excellent standing with eBay. Check out my show schedule to see which major shows I will be attending. I solicit want lists and will locate the Mint Errors of your dreams.

## Al's Coins

P.O. Box 147

National City, CA 91951-0147

Phone: (619) 442-3728

Fax: (619) 442-3693

e-mail: [alscoins@aol.com](mailto:alscoins@aol.com)



# MINT ERROR NEWS MAGAZINE

Bringing the latest mint error news to the collector.



Issue 9 • Spring 2005

Publisher & Editor  
**Mike Byers**

Design & Layout

**Sam Rhazi**

Contributing Editors

**Tim Bullard**

**Allan Levy**

Contributing Writers

Heritage Galleries & Auctioneers

Saul Teichman

Martin Wettmark

Advertising

The ad space is sold out. Please e-mail  
editor@minterrornews.com to be added  
to the waiting list.

## Subscriptions

We are not offering a paid subscription at this time. Issues of Mint Error News Magazine are mailed to our regular customers and coin dealers that we are associated with. Issues can be downloaded for free at [minterrornews.com](http://minterrornews.com)

Mint Error News is the official publication of [minterrornews.com](http://minterrornews.com). All content Copyright 2005 Mint Error News. P.O. Box 5090, San Clemente, CA 92674. All rights reserved. No part of this magazine may be reproduced in any form without the expressed written permission of the publisher. Opinions expressed in this publication do not necessarily represent the viewpoints of Mint Error News. This publication is distributed with the understanding that the information presented herein is from various sources for which there can be no warranty or responsibility by the publisher as to accuracy, price or completeness. Mint Error News accepts unsolicited manuscripts, artwork, and photographs for publication. Direct editorial submissions to [editor@minterrornews.com](mailto:editor@minterrornews.com) or P.O. Box 5090, San Clemente, CA 92674. All unsolicited material will not be returned.

PRINTED IN THE U.S.A.

# Mint Error News Magazine

Issue 9 • Spring 2005

## - Table of Contents -

Mike Byers' Welcome	4
Off-Metal Errors	5
Unique Pair of 1806 Draped Bust Quarter Brockages	10
Heritage to Auction Part Two of the Larry Rausch Collection	12
Barber Half Full Obverse Brockage	16
Around The World - Updating Activity In and Around Error World	19
Buffalo Nickels on Cent Planchets	20
Martha Washington Nickel	22
1918-S Standing Liberty Quarter Struck 13% Off-Center	23
1876 Indian Cent Struck on a 3¢ Nickel Planchet	24
1898 Barber Quarter Obverse Die Cap & Brockage	26
Draped Bust Dollar Struck 15% Off-Center	27
Mint Error News Price Guide	31
Exclusive Discounts	49
Off-Center Gold Crown	53
Pair of Barber Dime Die Caps Obverse and Reverse	54
1795 Flowing Hair Dollar Struck on Flawed Planchet	56
1855 Large Cent Obverse Die Cap	58
1866 5¢ J-517 Double Struck Mule Pattern	60
Double Struck Double Eagle	62
Mint Error News Museum	73
Frequently Asked Questions	77

# MINT **ERROR** NEWS<sup>TM</sup> MAGAZINE

Bringing the latest mint error news to the collector.



Mike Byers, Publisher & Editor Welcomes You!

Welcome to Mint Error News Magazine, bringing the latest mint error news and information to the collector. This is our third year bringing you both a print magazine and an on-line PDF magazine filled with articles, features and discoveries of major mint errors (striking errors) from the United States and around the World. Minterrornews.com has become one of the most popular and informative Internet resources for mint errors and is read by thousands of dealers and collectors.

Two major Mint Error News sponsors are Mike Byers and ANACS. Mike Byers is the Publisher and Editor of Mint Error News Magazine.



Mike Byers (mikebyers.com) has been a Professional Numismatist since 1978. He specializes in U.S. and World errors, and is now the largest dealer of the world's rarest mint errors. His new discoveries of major mint errors has been front page news for years. Mike Byers is also a Consultant for ANACS for Mint Errors.



ANACS is one of the three major grading services. They have been authenticating, certifying and encapsulating mint errors since 1991 which is years longer than the other two grading services combined. ANACS is highly respected in the Numismatic Community and has extensive experience in authenticating mint errors.

Two other sponsors to minterrornews.com are Tim Bullard (errorcointrader.com) and Allan Levy (alsocoins.com). Because of their combined experience and insight of the error coin market, they will bring valuable news and information to minterrornews.com.

Additional sponsors are CoinLink, CoinFacts.com, errorworldclub.org, Eureka Trading, uspatterns.com, Northeast Numismatics, Robert L. Astrich and The Software Clinic. We encourage collectors and dealers to submit articles and photos of major mint errors that we may feature on the website.

# Off-Metal Errors

by Al Levy (alscoins.com)

1. ALL LOTS HAD BUYERS. IF THE COINS ACTUALLY CHANGED HANDS IS UNKNOWN.
2. A PICTURE ACCOMPANIED EACH LOT OR IT WAS NOT RECOGNIZED.
3. BLURRY PICTURES OR OTHER PROBLEMS ARE NOTATED UNDER "OBSERVATION".
4. ITEMS MISLABELLED COMMANDED A SMALL PREMIUM.
5. SOME LOTS CHANGED HANDS MORE THAN ONCE.
6. ANY SCRATCHES, DENTS OR DEFECTS NOTATED WERE EITHER IN THE DESCRIPTION OR GRADING SERVICES' HOLDERS.
7. AUCTION HOUSES THAT LISTED THESE ERRORS WERE IGNORED.
8. SHIPPING CHARGES ARE NOT INCLUDED.

FROM 06/01/04 TO 09/30/04			
DOUBLE DENOMINATIONS			
DESCRIPTION	GRADE	SOLD	OBSERVATION
198(?) STRUCK 1c ON A STRUCK 10c	BU	\$510.01	BAD PICTURE. IN ORIGINAL 2x2. COULD SEE IT WAS A DBL DENOM
1996 STRUCK 1c ON A STRUCK 10c	GEM BU	\$550.00	FLIPOVER, CENT DATE ONLY, LOTS OF OTHER DETAIL
1997 STRUCK 1c ON A STRUCK 10c	ANACS 65	\$751.01	TWO FULL DATES & MM, PERFECTLY STRUCK LINCOLN OVER ROOSEVELT
1998 STRUCK 1c ON A STRUCK 10c	NGC 58	\$650.00	CENT STRIKE 180 DEGREE TURN. FULL DATE W/10c STRIKE'S DATE 198(?) - P SHOWING.
1998 STRUCK 1c ON A STRUCK 10c	PCGS 62	\$605.00	CENT DATE ONLY. NO MINTMARK.
1998 STRUCK 1c ON A STRUCK 10c	PCGS 66	\$799.00	FLIPOVER, HARD TO SEE DATE
2000 STRUCK 1c ON A STRUCK 10c	CH BU	\$500.00	OBVERSE PICTURE ONLY, BLURRY BUT VISIBLE, CENT DATE VISIBLE
2001-D STRUCK 5c ON A STRUCK 1c	GEM BU R&B	\$676.00	FULL DATE & MINTMARK, NOT ALOT OF DETAIL REMAINING FROM CENT STRIKE
2001-D STRUCK 5c ON A STRUCK 1c	GEM BU RED	\$820.00	LOTS OF DETAIL REMAINED OF 1ST STRIKE.
ND-D CU STRUCK 25c ON A STRUCK 1c	ICG 65 RB	\$1,500.00	MY OPINION. COUNTERFEIT. I GOT TO EXAMINE THIS PIECE BEFORE ITS SALE.
<b>OFF METALS</b>			
1c/NORTH EAST INDIES PL 1945	NGC 65 R&B	\$895.00	PART OF THE "5" MISSING
1c/10c 1960 LD	BU	\$1,050.00	FULL DATE & MINTMARK AREA, PIECE OF COPPER STRUCK OVER "IB" OF LIBERTY

<b>DESCRIPTION</b>	<b>GRADE</b>	<b>SOLD</b>	<b>OBSERVATION</b>
1c/10c 1960 LD	ANACS 63	\$1,025.00	FULL DATE & MINTMARK AREA
1c/KOREA 10H 1960LD	ANACS 64 RED	\$910.00	FULL DATE, NICE COLOR. LOOKS LIKE A NORMAL LINCOLN CENT.
1c/PHILIPPINE 10c 1963	NGC 58	\$999.00	FULL DATE, 2.0 GRAMS
1c/10c 1966	ANACS 62	\$331.55	FULL DATE & MINTMARK AREA
1c/10c 1967	UNC	\$113.60	FULL DATE, MANY RIM BUMPS
1c/10c 1967	PCGS 61	\$315.00	FULL DATE & MINTMARK
1c/10c 1970-D	ANACS 60	\$318.00	FULL DATE & MINTMARK, OBVERSE DIE CLASHING, WEAK STRIKE
1c/10c 1973-D	UNC	\$133.50	SCRAPES ON OBVERSE, FULL DATE & MINTMARK
1c/10c 1980-D	XF	\$74.00	FULL DATE & MINTMARK, DESCRIBED AS STRUCK THRU COPPER WASH, SCRATCHES ON OBVERSE, LOOKS CORRODED
1c/10c 1980-D	XF	\$128.50	FULL DATE & MINTMARK, TONED DARK
1c/10c 1981-D	AU	\$162.50	FULL DATE & MINTMARK
1c/10c 1982 LD	ANACS 64	\$300.99	WELL CENTERED. FULL DATE & MINTMARK AREA.
1c/10c 1988	ANACS NET AU	\$282.00	FULL DATE & MINTMARK AREA. SCRATCHES ON OBVERSE IN FIELD.
1c/10c 1995	PCGS 65	\$600.00	FULL DATE & MINTMARK AREA
1c/SINGAPORE 1c 1996	ANACS 63 RED	\$155.49	FULL DATE, NICE COLOR
1c/FOREIGN 1996	PCGS 64 RED	\$182.50	FULL DATE, WEIGHT = 20 GRAINS
1c/FOREIGN 199(6)	PCGS 64 RED	\$185.11	WEIGHS 20 GRAINS
1c/10c 1998-D	BU	\$325.00	FULL DATE & MINTMARK AREA
5c/1c 1946	ANACS NET 20	\$610.01	HOLDER STATES COIN IS DAMAGED. NOT VISIBLE
5c/1c 1964	BU R&B	\$209.50	MOST OF DATE
5c/1c 1973-D	AU	\$153.50	OBVERSE SCRATCHES, FULL DATE & MINTMARK
5c/1c 1977	AU RED	\$170.38	MOST OF DATE SHOWS
5c/1c 1980-P	ANACS 62 R&B	\$165.50	PARTIAL DATE, REVERSE BLUMISH, LOOKS LIKE COUNTINGROOM DAMAGE ON OBVERSE
5c/1c 1980-P	PCGS 64 RED	\$450.00	NO DATE REMAINS. NO MINTMARK. HOW DID PCGS DETERMINE IT TO BE A 1980-P?
5c/1c (1980)-P	BU R&B	\$149.50	PARTIAL DATE, FULL MINTMARK. OBV & REV BLEMISHES
5c/1c (1980)-P	CH BU RED	\$180.50	RED COLOR, ♪ OF DATE MISSING
5c/1c (1980)-P	ICG 63 BRN	\$89.95	PARTIAL DATE, FULL MINTMARK. NO RED.
5c/1c 1981-P	ANACS 61 R&B	\$175.00	TOP OF DATE & PIECE OF MINTMARK MISSING
5c/1c 1999-P	CH BU RED	\$360.00	TOP OF DATE & PIECE OF MINTMARK MISSING
5c/1c ND	BU RED	\$289.99	LOOKS LIKE A 1980-P, MOST OF DATE MISSING
5c/1c ND	ANACS 63 R&B	\$143.57	NO DATE OR MINTMARK
5c/1c ND	PCGS 64 RED	\$178.52	NO DATE OR MINTMARK.
5c/1c ZINC ND	AU	\$83.00	OBVERSE SPOT
5c/10c 1952	NGC 58	\$499.99	PARTIAL DATE, POSSIBLY A "52", HOLDER-NO DATE & NO "SILVER"?????
5c/10c - SILVER ND	AU	\$213.00	DAMAGED, NODATE OR MINTMARK

<b>DESCRIPTION</b>	<b>GRADE</b>	<b>SOLD</b>	<b>OBSERVATION</b>
5c/90% SILVER 10c ND	NGC 61	\$785.00	55% OFF CENTER, OFF METAL "SILVER PLANCHET"
25c/1c 1970-D	GEM BU RED	\$850.00	FULL DATE & MINTMARK
25c/1c 1972-D	PCGS 64 R&B	\$861.00	FULL DATE & MINTMARK
25c/1c ND	PCGS 63	\$520.00	NOTE - RED & BROWN COLOR, NOT NOTATED ON HOLDER
25c/1c ND	PCGS 64 R&B	\$800.00	19(7) OF DATE SHOWS, NO MINTMARK
25c/5c 1968-D	NGC 65	\$200.50	TYPE I PLANCHET (?) FULL DATE & MINTMARK.
25c/5c 1970-D	XF	\$57.21	SMALL OBVERSE SCRSTCH
25c/5c 1972-D	PCGS 62	\$143.61	SCRATCH ON OBVERSE
25c/5c 1977	XF	\$81.00	FULL DATE
25c/5c 1977	PCGS 58	\$127.50	FULL DATE
25c/5c (1978)	UNC	\$147.50	MOST OF DATE SHOWS
25c/5c 1978	NGC 65	\$325.00	TINY BIT OF DATE MISSING, NICE GEM SURFACES
25c/5c 1978	PCI 62	\$152.50	GREEN LABEL - FULL DATE
25c/5c 1979	ANACS 65	\$152.50	FULL DATE
25c/5c 1980-P	AU	\$110.50	FULL DATE & MINTMARK, DESCRIBED AS HAVING DAMAGE ON THE PLANCHET
25c/5c (1980)-P	VG	\$79.00	PARTIAL DATE. (DID NOT LOOK REAL!)
25c/5c 1999-D	NGC 65	\$565.00	FULL DATE & MINTMARK.
25c/5c DELAWARE 1999-D	PCGS 62	\$500.00	REVERSE STRUCK THRU NOT ON HOLDER - FULL DATE & MINTMARK
25c/5c CONNECTICUT 1999-P	PCGS 64	\$1,350.00	FULL DATE & MINTMARK, SCRATCH ON OBVERSE BUT AUTHENTICATED
25c/5c MARYLAND 2000-P	BU	\$1,212.00	FULL DATE & MINTMARK
25c/5c FLORIDA 2004-P	UNC	\$1,750.00	FULL DATE & MINTMARK
25c/5c FLORIDA 2004-P	BU	\$1,875.00	FULL DATE & MINTMARK
25c/10c (1964)	NGC 64	\$593.00	WEIGHS 2.4 GRAMS. TOP OF DATE SHOWS.
25c/10c ND SILVER	ANACS 63	\$400.00	"D" MINTMARK SHOWS, NO DATE
25c/10c ND SILVER	ANACS 63	\$405.00	(196) "P"
25c/10c ND SILVER	NGC 58	\$550.00	NO DATE, "P" MINT, DIE CRACK FROM K7:00 TO CENTER
25c/10c ND SILVER	PCGS 64	\$596.00	TOP OF "19" ALL THAT SHOWS, NO MINTMARK AREA VISIBLE
25c/10c (19)70-D	NGC 58	\$282.01	REVERSE SCRATCHES NOT NOTATED ON HOLDER
25c/10c (1971)-(D)	NGC 65	\$381.17	TOP OF DATE MISSING
25c/10c ND CLAD	AU58	\$202.50	NO DATE. LOOKS LIKE A "P" MINTMARK.
25c/10c ND	ANACS 60	\$229.81	DATE COMPLETELY GONE. NO MINTMARK
25c/10c ND	NGC 66	\$356.55	NO DATE REMAINS. CLAD.
50c/25c (1964)	AU	\$500.00	TARNISHED, SCRATCHS ON NECK
50c/25c (1964)	NGC 63	\$1,075.56	MOST OF DATE MISSING
50c/25c ND CLAD	PCGS 63	\$500.00	MINTMARK "D", NO DATE
50c/25c ND CLAD	PCGS 64	\$600.00	NO DATE - "P" MINTMARK

<b>OFF STOCK</b>			
<u>DESCRIPTION</u>	<u>GRADED</u>	<u>SOLD</u>	<u>OBSERVATION</u>
1c 1943/THICK CORRODED PLANCHET	ANACS NET 40	\$1,000.00	WEIGHS 3.0 GRAMS. NORMAL 2.69 GRAMS
25c/10c STOCK 1967	XF	\$31.00	TYPICAL WEAKNESS AROUND THE RIM.
25c/10c STOCK 1970-D	FINE	\$17.50	WEIGHS 65.3 GRAINS
25c/10c STOCK 1970-D	VF	\$15.00	WEIGHS 65.2 GRAINS
25c/10c STOCK 1970-D	VF	\$18.75	WEIGHS 66.4 GRAINS
25c/10c STOCK 1970-D	XF	\$9.95	FEW OBERSE SCRATCHES
25c/10c STOCK 1970-D	XF	\$19.99	DAMAGED ON RIM
25c/10c STOCK 1970-D	XF	\$21.49	CLEANED
25c/10c STOCK 1970-D	XF	\$34.33	USUAL LOOK.
25c/10c STOCK 1970-D	UNC	\$16.05	OBERSE CIRCULAR COUNTING ROOM DAMAGE.
25c/10c STOCK 1970-D	ANACS AU58	\$51.01	WEIGHS 4.2 GRAMS. USUAL LOOK.
25c/10c STOCK 1970-D	NGC 65	\$192.50	WEIGHS 4.2 GRAMS. (LISTED WRONG ON ITEM'S DESCRIPTION. CLEARLY MARKED ON HOLDER.)
25c/10c STOCK 1971-D	ANACS 63	\$453.00	ALMOST A FULL DATE. MINTMARK COMPLETE.
25c/10c STOCK 1971-D	NGC 55	\$65.98	WEIGHS 43. GRAMS.

# **SUBMIT YOUR ARTICLE TO MINT ERROR NEWS MAGAZINE**

**Please make sure you have copyrights to any content that you submit. Your article may be subject to revision. If you include images with your article, please use a minimum resolution of 300 DPI.**

**Please submit all content to:**

**[editor@minterrornews.com](mailto:editor@minterrornews.com)**



DOWNLOAD NOW AT MIKEBYERS.COM

HARD COPIES ARE AVAILABLE TO OUR REGULAR CUSTOMERS

# BYERS NUMISMATIC CORP

MIKEBYERS.COM



The Largest Dealer of the World's Rarest Mint Errors™  
U.S. ERRORS • WORLD & ANCIENT ERRORS • DIE TRIALS • CURRENCY ERRORS

# Mike Byers' 2005 Catalog

Featuring  
U.S. & World  
Major Mint Errors  
and Die Trials

*This catalog features almost 700 rarities with a value of over \$6 million.*



# Unique Pair of 1806 Draped Bust Quarters Obverse & Reverse Brockages

by Mike Byers (mikebyers.com)

These two mirror brockages of 1806 Draped Bust Quarters are spectacular and are among the rarest U.S. type errors that I have ever handled. I just purchased these from a old time mint error collection and was very pleased since it took months of negotiations to buy them. PCGS just certified them and I am proud to offer them for sale since they have not been available for decades.

They are unique and the only known brockages in the Bust Quarter Series (1796-1838). These are the earliest known brockages on any U.S. Silver denomination. The obverse brockage was matched to the reverse die of the 1806 B-2. The reverse brockage was matched to the obverse die of the 1806 B-1 (1806/5 overdate).

Fred Weinberg, the mint error authenticator for PCGS, examined and authenticated these two brockages. He stated that “this pair of 1806 Draped Bust Quarters is unique, spectacular, incredible and has not been seen in 25 years.”

For comparison purposes, although not in the same class as the two Draped Bust Quarter brockages, the only early U.S. Silver brockage

that even comes close is a Cap Bust Dime Brockage that sold for \$20,700 in the Bowers and Merena Auction of the Logan Collection. It subsequently graded VG at NGC and is being offered for considerably more. These two brockages are from an early and rarer series, are larger denominations, are graded considerably higher and are unique for the series.

There really is no U.S. early type coin mint error that compares to the rarity, status, importance and excitement of this unique pair of Draped Bust Quarter brockages.





# Heritage to Auction Part Two of the Larry Rausch Collection of Error Coins at FUN 2005

Additional selections from Larry Rausch's superb collection of nineteenth and twentieth century error coins will be auctioned in Heritage's upcoming FUN Signature Auction, to take place January 12 to 15 in Fort Lauderdale. Heritage offered Part One of the Rausch Errors at the recent Pittsburgh ANA Signature Auction. These are the first coins Mr. Rausch has ever sold in a lifetime of collecting.

"Mr. Rausch started collecting at the age of ten, in 1958," noted Heritage President Greg Rohan. "His father was a vest pocket dealer during the 1960s, and as might be expected of the times, invested heavily in rolls, many of which Mr. Rausch still holds. Every week he searched \$50 in cents gathered from parking meters, with several finds nice enough to be mentioned in *Coin World*. Through his high school years, he accompanied his father to many small shows in the Midwest. He noted the occasional error coin at these shows, and his collection started when he traded with his father for a group of 31 Liberty Seated Dimes (purchased for \$34.10 from a collector). Incidentally, he still owns those Liberty Seated Dimes."

Larry Rausch's collection of error coins covers obsolete types ranging from Early Quarters and Half Cents to Buffalo Nickels and Mercury Dimes. Many collectors search for years for the kinds of dramatic errors seen in this collection without much success. Perhaps the oddest coin in Part Two of his collection is an 1856 Three

Cent Silver Stuck Over a European Taler. This is a very curious coin with a barely visible date, yet the obverse star is reasonably clear. The design elements of the Taler undertype are clear, with TALER and an oak leaf present on the obverse, while the reverse sports the partial word WAR with an O to the right on the lower portion of the Three Cent Silver design. A curious piece like this can become a great coin to study and show off.



Another truly fascinating coin is a 1923-S Standing Liberty Quarter, graded AU58, and struck 25% off center toward 10 o'clock on the obverse. Standing Liberty Quarter errors are rare to begin with, and to find this combination of a dramatic error and high grade on a key date coin makes it even that much more desirable. The coin has no signs of toning, remaining silvery-white with some luster in the fields. The date is drawn heavily by the off-center striking, but it is obviously a 1923-S. Liberty's shield is sharply struck, but her head is not present.



The Larry Rausch Collection includes coins of denominations and types ranging from Half Cents to Morgan Dollars, with the types of errors ranging from off-center strikes to wrong planchets. Connoisseurs of error coins will find a wealth of material in this collection to fit their interests.

## Other highlights of the Larry Rausch Collection include:

*1809 Half Cent, PCGS VG10, 25% Off-Center with rotated reverse*

*1858 Cent, Small Letters, ANACS G4, 25% Off-Center*

*1862 Cent, PCGS MS64, 20% Off-Center*

*1864 Cent, L on Ribbon, PCGS AU53, 5% Off-Center with Rotated Reverse*

*1865 Cent, PCGS XF45, 50% Off-Center*

*1874 Cent, PCGS XF40, 20% Off-Center*

*1906 Cent, PCGS MS63BN, 35% Off-Center*

*1907 Cent, PCGS MS64BN, 50% Off-Center*

*Undated Indian Head Cent, PCGS MS64RB, 50% Off-Center*

*Undated Indian Head Cent, PCGS VF30, 65% Off-Center*

*1865 Three Cent Nickel, PCGS MS63, 15% Off-Center*

*1866 Nickel, PCGS F12, 15% Off-Center*

*1901 Nickel, Struck on Cent Planchet, PCGS MS63BN*

*1912-D Nickel, PCGS AU55, 7% Off-Center*

*1918 Nickel, PCGS AU53, 25% Off-Center*

*1918 Nickel, Struck on Cent Planchet, PCGS AU58BN*

*1919 Nickel, PCGS MS64, 15% Off-Center*

*1935 Nickel, Struck on Cent Planchet, PCGS MS65RB*

*1876 Dime, PCGS AU55, 20% Off-Center*

*1887 Dime, PCGS MS64, 5% Off-Center*

*1890 Dime, PCGS MS64, 5% Off-Center*

*1891 Dime, PCGS MS64, 10% Off-Center*

*1901 Dime, PCGS AU58, 20% Off-Center*

*1904 Dime, PCGS AU58, 20% Off-Center*

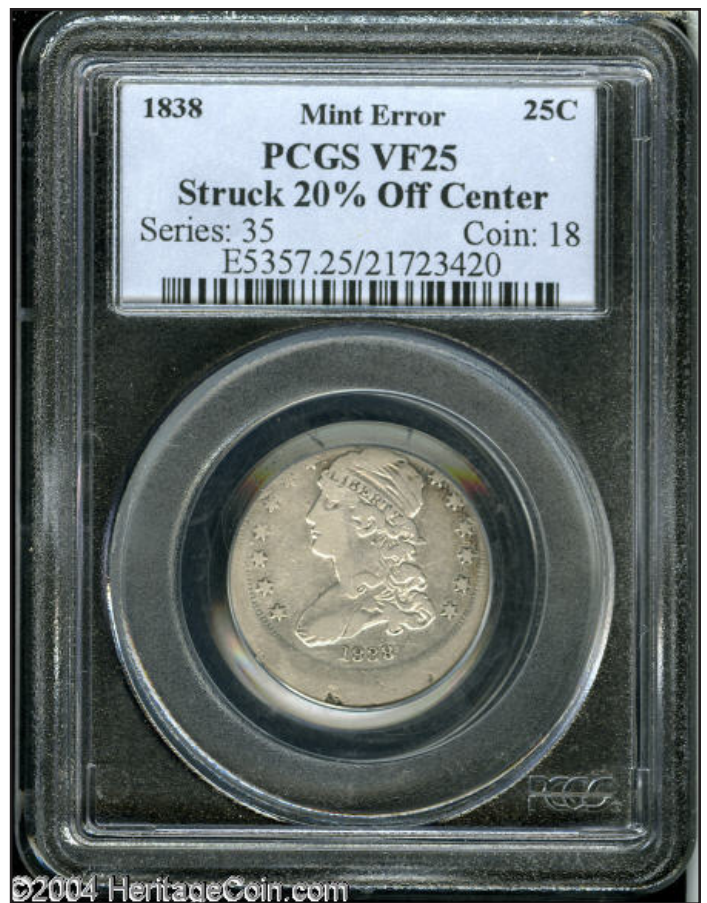
*1920 Dime, PCGS MS63, 40% Off-Center*

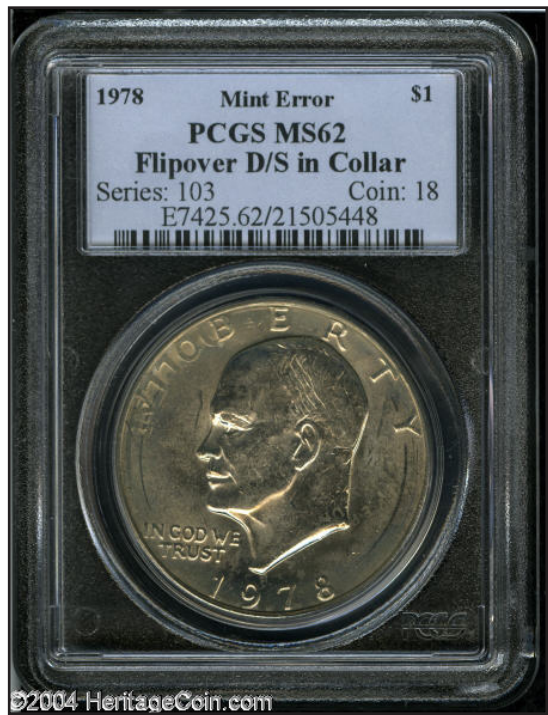
*1806 Quarter, PCGS VG8, Misaligned Obverse Die*

*1838 Bust Quarter, PCGS VF25, 20% Off-Center*

*Undated Seated Quarter, No Motto (Hubs of 1840-1859, struck in Philadelphia), PCGS XF40, 35% Off-Center*

*1883-O Silver Dollar, PCGS MS63, 20% Off-Center*





Catalogs for this auction will be available in mid-December. To purchase a catalog, please contact Nicole Jewell, 800-872-6467, 3500 Maple Avenue, 17th Floor, Dallas, TX, 75219.



# Barber Half

## Full Obverse Brockage

by Mike Byers (mikebyers.com)

This is one of the most spectacular major mint errors that I have ever had the pleasure of handling. It is a unique first strike full mirror brockage Barber Half. It is the only known Barber Half brockage for the entire series. It is almost uncirculated with original luster and beautiful toning.

This show piece mint error has traded between many dealers and collectors in the last 30 years. Every time it exchanges hands it causes a stir and draws attention among mint error enthusiasts. It was originally purchased by Steve Estes in 1972, who is a coin dealer in Oregon. When Steve bought the piece he was told that it was kept in a small leather pouch for almost 50 years. The person who sold it to Steve was a teller at Caliente Race Track in Tijuana, Mexico in 1926.

In 1976 Harlan White, another coin dealer, purchased this unique mint error as part of a large collection. It subsequently traded hands and was purchased by Fred Weinberg. At one point in time David Lawrence, author of *The Complete Guide to Barber Halves*, also had the pleasure of buying and selling this piece. Robert Astrich, a coin dealer from Hempstead, Texas, also handled it and wished he had kept it for himself.

It eventually became part of the Jerry Bobbe collection, who is a professional numismatist from Oregon. In 1997 Jerry Bobbe sold this piece to another dealer who offered it to me at the 2002 New York ANA. I was given the first opportunity to buy it from him. Having heard about this famous and unique mint error trading hands many times over the last quarter century, I immediately purchased the coin on the spot.

This Barber Half brockage is graded AU 58 by PCGS. Since it is an obverse brockage there is no date, but it was struck at the San Francisco mint. It is struck on a planchet that has extremely smooth surfaces, no distracting marks of any kind, original mint luster, reflective fields and original golden brown toning.


Since this was a first strike full mirror brockage mint error, the brockage is extremely deep, not distorted and was struck completely centered on the planchet without expanding beyond the collar.








**THE COMPLETE  
GUIDE TO  
BARBER  
HALVES**




By David Lawrence

**ERROR COINAGE**

All major errors of Barber halves are very scarce. Shown here are two of the more spectacular ones. The first, a full brockage half from the San Francisco Mint (shown at right), is believed to be unique. The coin has no obverse. In its place is an incuse mirror-image of the reverse because the reverse of another coin acted as the die. This half was purchased by Oregon coin dealer Steve Estes in 1972 at Lyle Clark in San Diego. It had been received in change by a teller at Caliente Race Track in Tijuana, Mexico in 1926. Bets were 50 cents at that time and supposedly it was the bettor's last half dollar, taken from a special place in his wallet. The teller was nearly 90 when he sold it to Steve and had kept it in a small leather pouch for the 46 years. The coin was sold to dealer Harlan White in 1976 as part of a large deal and has since passed through a number of hands (including the author's.) It is currently owned by Sharon and Jerry Bobbe, professional numismatists from Oregon, who vow they "will never sell it." The Bobbes kindly lent the coin to be photographed.



**Normal Reverse  
of Brockage Half**



**Incuse, Mirror-image  
Reverse of Brockage Half**

The Complete Guide to Barber Halves

# BYERS NUMISMATIC CORP

MIKEBYERS.COM



The Largest Dealer of the World's Rarest Mint Errors™

U.S. ERRORS • WORLD & ANCIENT ERRORS • DIE TRIALS • CURRENCY ERRORS

## BUYING & SELLING

### MAJOR U.S. MINT ERRORS

- ANACS, PCGS, NGC, ICG, SEGS & RAW
- U.S. 1¢ THRU \$50 ERRORS
- 19TH AND 20TH CENTURY TYPE COINS:  
**ALL DENOMINATIONS**
- MODERN COINS: STATES QUARTERS, KENNEDY HALVES, IKE, SBA AND SACAGAWEA DOLLARS
- MAJOR AND DRAMATIC ERRORS FROM \$500 TO \$100,000
- DIE TRIALS, HUB TRIALS, SPLASHERS, UNIFACE AND OFF-METAL STRIKES

### U.S. CURRENCY ERRORS

- ESPECIALLY ERRORS ON \$2, \$50, \$100 & \$500 NOTES
- DRAMATIC AND UNIQUE PRINTING & CUTTING ERRORS FROM \$500 TO \$10,000
- DOUBLE DENOMINATIONS, MULTIPLE IMPRESSIONS & MULTIPLE ERRORS
- LARGE SIZE NOTE ERRORS

### WORLD GOLD & SILVER ERRORS

- ANACS, PCGS, NGC, ICG & RAW
- ALL DENOMINATIONS FOR MAJOR WORLD COUNTRIES
- ESPECIALLY SWISS, GERMAN, ENGLISH, FRENCH, CANADIAN & MEXICAN
- ALL 12 COUNTRIES IN THE EUROPEAN MONETARY UNION (EUROS)
- ALL COUNTRIES IN THE BRITISH COMMONWEALTH
- MEDIEVAL THRU MODERN
- MAJOR AND DRAMATIC ERRORS FROM \$500 TO \$50,000
- DIE TRIALS, SPLASHERS, UNIFACE AND OFF-METAL STRIKES

### ANCIENT ERRORS

- ANACS, ICG & RAW
- ALL GOLD DENOMINATIONS
- 500 BC TO 950 AD
- GREEK, ROMAN AND BYZANTINE COINAGE
- MAJOR AND DRAMATIC ERRORS FROM \$500 TO \$10,000

## MIKE BYERS

P.O. Box 5090, San Clemente, CA USA 92674

Office: 949-276-7072 • Fax: 949-276-7073

Fed Ex Address only: 1001 Avenida Pico #C 612, San Clemente, CA 92673

E-Mail: [mike@mikebyers.com](mailto:mike@mikebyers.com) • Website Design: [sam@mikebyers.com](mailto:sam@mikebyers.com)

Mike Byers, Professional Numismatist since 1978

Byers Numismatic Corp. A California Corporation Since 1980

Mike Byers is a consultant to ANACS for Mint Errors



# “Around The World”

- Updating Activity In and Around Error World Groups -

by Jim Archibald - EW Founder

Error World Groups continue the steady growth and coin collecting is still a hot topic as this goes to press. The current statistics for EW Groups as of 12/01/04 are as follows...

EW1 - Error World - 113 members  
EW2 - Error World 2 - 508 members  
EW3 - Variety Coins - 266 members  
EW4 - U.S.Coin Collecting - 624 members  
EW5 - World Coin Collecting - 193 members  
Total - 1,704 Error World Members

The Holidays are now upon us, and I hope everyone has had a great time. By the time this issue goes out, it will be time for the big F.U.N. show in Florida. I would like to invite readers to join us live on-line. EW Groups covers most areas of collecting and we have some of the leading numismatists around in our various sites. Join us and see if you like it! We're 100% free and we intend to stay that way!

Recently, there has been lots of talk about doubled dies. Yes sir, these variety coins that are no longer supposed to happen. Well, I'm very happy to announce that they do. In fact, two of our members are now in the history books for discovering some of these modern 'single press' doubled dies. Gabe Alonzo who discovered a major example of the new Peace Nickel doubled die and Duane Smith who has found several doubled die reverse 2004 Lincoln Cents. You go guys! Make us proud! "Smitty" has also generously donated one of his finds to EW which will be raffled off totally free before Christmas to one lucky member. One of his coins recently sold on eBay for over \$250.00! Not too bad for a one Cent investment.

Our 5th Anniversary celebration was a great success and I want to thank all our members for making EW Groups the best place for coin collectors today! I'm looking forward to seeing you here sometime soon!

**ERROR**  
**WORLD**

Join the *hottest*  
Error Coin Club on the Net!

e r r o r w o r l d c l u b . o r g

# Buffalo Nickels on Cent Planchets

by Saul Teichman (uspatterns.com)

One of the things that hinders error collecting, in my opinion, is the lack of knowledge regarding just how rare certain popular collectibles are. In previous editions, I have listed the examples known to me of Shield nickels on cent planchets and Liberty nickels on cent planchets. I have since begun to track at a high level the number of buffalo nickels on cent planchets.

So far, I have seen the following dates.

- 1918 About a half dozen known*
- 1918-S HIM 11/82 sale*
- 1919 About a dozen known*
- 1919-D Bolt*
- 1920 About 1 ½ dozen known including one 40% off-center ex Rausch-Heritage 8/04, Byers – PCGS64BN*
- 1924 Federal Brand sale*
- 1925 1) Weinberg 7/04 Inventory PCGS61BN*  
*2) Byers NGCVG08*
- 1929 64 ANA*
- 1934 1) Weinberg 3/02 FPL, Saul Teichman - NGC62BN*  
*2) Rausch-Heritage 8/04, Saul Teichman – PCGS63BN*  
*3) Byers 10/04 – ANACS63*  
*One of these ex 64 ANA*
- 1935 Bolt*
- 1936 81 ANA - XF (mintmark area not on planchet so could be a 36-D)*
- 1936-D B/R 3/02 as ANACS-AU55, Heritage 7/02 now PCGSAU50*
- 1937-S Superior 9/98 to Tony Terranova - PCGSXF45*
- No Date Several known, Kagins had one well circulated.*

Obviously, this list is far from complete. This article is a call to all collectors of these pieces to tell the collecting fraternity just what is out there and possibly to build a condition census of these pieces. If you are willing to participate, please let me know what you have. I can be e-mailed at [saul.teichman@ey.com](mailto:saul.teichman@ey.com). All names will be kept confidential. The results and possibly the number of pieces out there will be published in a future edition.



# BYERS NUMISMATIC CORP



## MIKEBYERS.COM



### The Largest Dealer of the World's Rarest Mint Errors™

U.S. & WORLD MAJOR MINT ERRORS • DIE TRIALS • NUMISMATIC RARITIES



Unique SPECIMEN Silver Certificate Set of 16  
PCGS Certified



1920 SL 25¢  
Struck on Peru 20C Planchet  
NGC MS 60 FH Unique



1838 \$5 Die Trial Splasher  
J-A1838-6  
PCGS MS 65 UNIQUE



Unique 1866 \$2½ Struck on a 3 Cent Nickel Planchet  
NGC MS 66



Pair of Indian Head 1¢ Die Caps  
Obverse & Reverse  
PCGS MS 64



Barber Half  
Full Obverse Brockage  
PCGS AU 58 UNIQUE



Unique Set of Four Paraguay Gold Overstrikes  
NGC Certified



1921-S Morgan Dollar  
Struck 45% Off-Center  
NGC MS 63



1895-O Barber Dime  
Obverse Die Cap  
PCGS MS 64



1846 J-110A \$5 Obv Die Trial  
Struck on \$2½ Trial  
NGC MS 65 BN



1924 SL 25¢  
Double Struck  
ANACS AU 55



1862 Indian Head 1¢  
Deep Obverse Die Cap  
PCGS MS 62



Unique Set of Three Paraguay Gold Overstrikes  
NGC Certified



1887 \$3 Indian Gold Proof  
Triple Struck  
PCGS PR 63



1942 Walking Liberty 50¢  
Struck on Silver 25¢ Planchet  
PCGS MS 65



Unique Jefferson Nickel Die Trial  
PCGS Certified



1802/1 \$5 Draped Bust Gold  
Triple Struck Obverse  
ANACS EF 45



1865 2¢  
Deep Obverse Die Cap & Brockage



1804 \$2½ Capped Bust To Right  
Double Struck  
NGC Fine 15



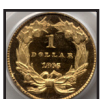
1898 Barber 25¢  
Obverse Die Cap & Brockage  
PCGS MS 62



1945-S WL 50¢  
Struck on El Salvador 25¢ Planchet  
NGC MS 63 UNIQUE



1806 \$5 Capped Bust Triple Struck  
Rotated 90°  
PCGS AU 50



1865 \$1 Indian Gold Proof  
Triple Struck Reverse  
PCGS PR 64 Cameo



1920 Buffalo Nickel  
Struck on Copper Planchet  
NGC AU 55 UNIQUE



1874 \$1 U.S. Gold T3  
Full Brockage  
PCGS MS 62 UNIQUE



1873 \$20 Closed 3 J-1344  
Double Struck  
NGC PF 61 RB



1901/0-S \$5 Liberty Gold  
10% Off-Center  
PCGS AU 55



1853 U.S. Assay Gold \$20  
Double Struck  
NGC AU 55



1965 English Penny  
Struck on Gold Planchet  
PCGS MS 62



1875-CC \$20 Liberty Gold  
Partial Collar  
NGC MS 62



Pair of Barber Dime Die Caps  
Obverse & Reverse  
PCGS AU 55 UNIQUE



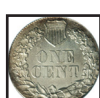
Franklin Half Dollar  
Struck on 1948 Cent  
NGC MS 64 BN



1910 Lincoln Cent  
Uniface Test Strike  
PCGS AU 58



1904 \$20 Gold  
Double Struck  
ANACS MS 60 Proof-Like



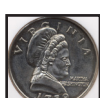
Indian Cent on Half Dime Planchet  
Uniface Obverse  
PCGS MS 63



1851 3¢ Obverse & Reverse  
Die Trials  
Struck on Cardboard



1864 2¢ Obverse Die Cap  
Mated With Brockage  
PCGS MS 62



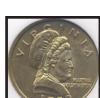
Martha Washington Dollar Test Piece  
Clad Plan w/Exp Edge  
NGC MS 64



1869 Indian Cent  
Struck on Silver Dime Planchet  
PCGS AU 55



1856 Large Cent Obverse Cap/  
Brockage Reverse  
Gem BU



Martha Washington Dollar Test Piece  
Sac Plan w/Exp Edge  
NGC MS 64



1906-D \$20 Liberty Gold  
Broadstruck  
NGC AU 58

# Martha Washington Nickel

by Saul Teichman (uspatterns.com)



The illustrated example is the first Martha Washington 5 cent piece to come onto the marketplace. It was offered as lot 899 in Superior's August 2004 sale.

Its existence confirms that the U.S. Mint has created these "token" dies in all currently minted denominations.

The Martha Washington design has been used by the Mint as an all-purpose test piece since 1965 when it was first used for testing the cupro-nickel clad sandwich alloy on most of today's coinage.

This discovery piece was struck from dies using the original 1965 design with the lettering close to the rims, Edward Groves initials under the portrait and on the reverse the tree touching the "A" in "Washington". To compare this die to the 1999 die, [click here](#).

It also represents some kind of enigma. To our knowledge, the Mint had not contemplated changing the alloy of the 5 cent piece. The piece is described by Superior as being struck in "cupronickel-copper composite metal", but, according to NGC, was struck on a standard nickel planchet.

We believe it was likely struck to test the Schuler coin press in the 1980s. As these dies were given by the Mint to outside contractors, it is not known whether this coin was struck inside or outside of the Mint.

We are hoping that additional information will be forthcoming now that the coin is available as to how many and what year they were struck.

Photo courtesy of Superior.

# 1918-S Standing Liberty Quarter Struck 13% Off-Center

by Mike Byers (mikebyers.com)

All Major Errors on Standing Liberty Quarters are extremely rare. Very few are known and they are considered to be among the most difficult series of U.S. type coins with major errors.

This early dated, San Francisco Minted Standing Liberty Quarter is struck 13% off-center. It is in choice mint state condition, has original Mint luster and is fully struck with the “full head” designation.

This is among the furthest off-center Standing Liberty Quarters known. This would be the highlight of any U.S. Major Mint Error collection or a showpiece of any Standing Liberty Quarter collection.



# 1876 Indian Cent Struck on a 3¢ Nickel Planchet

The standard weight for a 3¢ Nickel coin is 1.94 grams, with a tolerance of +/- 0.26 grams. Therefore, this rare off-metal is within the limit for a 3¢ Nickel planchet since it weighs 1.68 grams. There were no other similar weight planchets of the copper and nickel composition in use at the Philadelphia Mint in 1876.

Indian Cent off-metals are very rare. This mint error is sharply struck with very reflective fields. It is also a rarer date and is in gem mint state condition.





# **CONECA**

The Combined Organizations of Numismatic Error Collectors of America



**CONECA is a national numismatic organization devoted to the education of error and variety coin collectors. CONECA focuses on many error and variety specialties, including doubled dies, Repunched mintmarks, multiple errors, clips, double strikes, off-metals and off-centers -- just to name a few. It publishes an educational magazine, The Errorscope, which is printed and mailed to members bimonthly. CONECA offers a lending library, examination, listing and attribution services; it holds annual meetings at major conventions (referred to as Errorama) around the country, and offers auction services to its members. Please visit [conecaonline.org](http://conecaonline.org) and enjoy!**

#### **CONECA Variety Attribution Services**

CONECA offers two attribution services. One service enables members and non-members to send their coins directly to an authorized CONECA attributer. The other service is offered through the numismatic grading firm of ICG and enables CONECA members and non-members to have their coins attributed by a CONECA attributer and then graded and slabbed by ICG.

#### **CONECA Error Examination Services**

CONECA offers two examination services. One service enables members and non-members to send coins to an authorized CONECA examiner who will return an opinion of each coin's error classification. The other service is offered through the numismatic grading firm of ICG and enables CONECA members and non-members to have their coins examined by a CONECA examiner and then graded and slabbed by ICG.

# **[conecaonline.org](http://conecaonline.org)**

# 1898 Barber Quarter Obverse Die Cap & Brockage

This is the only known obverse die cap in the Barber Quarter Series. It is very deep and barely fits in the PCGS holder. The reverse has a brockage of the obverse design. This spectacular major mint error is in mint state condition with attractive toning. It would be the highlight of a type coin collection, a Barber coin collection or a mint error collection.



# Draped Bust Dollar Struck 15% Off-Center

This Draped Bust Dollar mint error is well known in the numismatic community since it is the furthest off-center known. It was struck a full 15% off-center. It is attractively toned and was conservatively graded.





**BYERS NUMISMATIC CORP**



**MIKEBYERS.COM**



**The Largest Dealer of the World's Rarest Mint Errors™**

U.S. ERRORS • WORLD & ANCIENT ERRORS • DIE TRIALS • CURRENCY ERRORS

# Consign Your Coins to Mike Byers

## Terms and Conditions

We are offering this service for error collectors and dealers alike. The reason why we are doing this is to promote the error business through the world wide web and to connect error collectors with the coins they have been searching for. In order to post your item on our web site: [byersnc.com](http://byersnc.com), you must agree to the following terms and conditions.

1. All major U.S. mint errors are accepted if they are certified by ANACS, PCGS, NGC or ICG.
2. The approximate value of each item must exceed \$1000.
3. The minimum time for any listing is thirty days.
4. Seller agrees to a seven day return privilege from date of receipt.
5. Seller agrees to use an escrow service if requested by the buyer.
6. We reserve the right to deny or cancel any listing at any time.
7. All listing are subject to prior sale.

Please do not offer us the following:

1. More than two coins bonded together.
2. Caps more than ½ inch high.
3. U.S. Errors that were obviously and intentionally struck as error coins. No impossible mint errors.

We only accept consignments of U.S. Errors that were legitimately found or released thru normal distribution channels.

## Scanning Specifications

1. Scan both the obverse and reverse of the entire holder.
2. Scan with a resolution of at least 300 dpi.
3. Save the picture in jpeg format (jpg).

## Information Requirements

In addition to e-mailing a photo of your item, please include the following information:

1. Name, Address & Phone Number
2. E-Mail Address
3. Asking Price

After your item is listed, we will contact you by e-mail with any offers and questions. Once a price is agreed upon we will handle the entire sale for a 10% transaction fee, which includes all costs (eBay fees, grading fees, webmaster charges, postage and registration fees, insurance, paperwork, etc.).

If you have a Mint Error collection for sale or would like to sell your duplicates and do not want to consign your coin(s), we can purchase your entire collection outright. Please contact us at [mike@mikebyers.com](mailto:mike@mikebyers.com).

Coming In 2005 From Zyrus Press  
A New Book By Mike Byers

From the Publisher & Editor of Mint Error News

# MINT **ERROR**<sup>TM</sup> GUIDE

Your Guide to the Most Spectacular Major Mint Errors



DISCOVERIES

AND

PRICE GUIDE

FOR U.S. AND WORLD  
MAJOR MINT ERRORS

AND DIE TRIALS



by Mike Byers

Design & Layout: Sam Rhazi

ZYRUS P.O. 17810  
PRESS Irvine, CA 92623  
(888) 622-7823



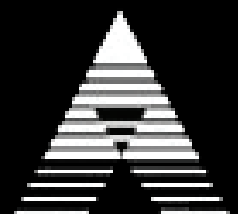
## Extraterrestrial Numismatics

[www.anacs.com](http://www.anacs.com)

ANACS is the Collector's Choice because we know what counts: knowledge, integrity, and service. How much we value coin collecting is evident in our work.

The ANACS team enthusiastically works to advance coin collecting by offering unequalled expertise and developing new services.

This makes ANACS the choice of hobbyists, professional numismatists, and dealers. We are the coin grading service to contact when you want to know all the details about your coin's authenticity and grading.



Collect with passion. ANACS

# Mint Error News Price Guide

This price guide is brought to you by Mint Error News. It has been compiled by many of the top major mint error dealers.

This price guide is a guide. Prices fluctuate due to the date, grade, eye appeal and how dramatic the striking error is. Rarity is also a factor. The price is sometimes based on the rarity and grade of the type of coin as well as how rare the error is. The price can also vary depending on whether two collectors are bidding for the same rare major mint error. When purchasing a mint error, it is important to use multiple resources to determine value, as there are many mint errors that do not fit into one category.

## Proof Errors



**P**roof coins are struck by technicians who hand feed the blanks into special presses. They are produced, examined, and packaged using extreme quality control. It is very unusual to find major proof errors. A few broadstrikes, off-centers, double strikes in collars and off-metals have been known to be found in sealed proof sets. Proof errors are aggressively sought after by many error collectors.

A very small group of Proof errors recently came from a collection that was auctioned by the State of California. The U.S. Secret Service inspected and released this collection to the State of California determining that it was legal to own. The State of California then auctioned the collection and it has been dispersed since the sale.

Denomination	Broadstrikes	Die Trials	Double/Triple Strikes	Off-Center Strikes	Partial Collar Errors
Proof Lincoln Cent	\$1,500 - \$2,500	N/A	\$4,000	\$1,500 - \$3,000	\$750
Proof Jefferson Nickel	\$2,500 - \$4,000	\$4,000	\$6,000	\$2,000 - \$5,000	\$1,000
Proof Clad Dime	\$3,000 - \$5,000	N/A	\$6,000	\$2,500 - \$5,000	\$1,250
Proof Clad Quarter	\$4,000 - \$5,000	N/A	\$7,500	\$3,000 - \$6,000	\$1,500
Proof Clad Half	\$5,000 - \$7,000	\$4,000 - \$5,000	\$7,500	\$4,000 - \$7,500	\$2,000

# Mint Error News Price Guide

## Broadstrikes



A broadstruck error occurs when a coin is struck without the collar to form the rim and edge that is part of the shape of the coin. Coins can be broadstruck on either type one or type two planchets. When a coin is broadstruck the blank being fed into the collar will spread and distort outward as it is being struck because the collar isn't in the correct position to retain it.

Denomination	(Small) XF/AU	(Small) Unc	(Large) XF/AU	(Large) Unc
Large Cent	\$150	\$300	\$400	\$1,500
Flying Eagle Cent (1857 – 1858)	\$1,000	\$2,500	\$1,500	\$5,000
Indian Cent	\$50	\$150	\$200	\$350
Lincoln Cent 1930 and Earlier	\$50	\$150	\$100	\$250
Lincoln Cent 1943 Steel	\$40	\$100	\$75	\$200
Proof Lincoln Cent	N/A	\$1,500	N/A	\$2,500
3 Cent Nickel	\$250	\$1,000	\$400	\$1,500
3 Cent Silver	\$1,000	\$3,500	\$1,500	\$5,000
Shield Nickel	\$400	\$1,250	\$1,000	\$2,500
Liberty Nickel	\$150	\$300	\$200	\$600
Buffalo Nickel	\$100	\$200	\$200	\$500
Jefferson Nickel War Time	\$100	\$200	\$200	\$500
Proof Jefferson Nickel	N/A	\$2,500	N/A	\$4,000
Seated Half Dime Legend	\$1,500	\$3,500	\$2,000	\$7,500
Seated Dime Legend	\$1,500	\$3,500	\$2,000	\$7,500
Barber Dime	\$150	\$250	\$200	\$400
Mercury Dime	\$40	\$150	\$150	\$250
Proof Clad Dime	N/A	\$3,000	N/A	\$5,000
Barber Quarter	\$600	\$1,250	\$1,000	\$2,500
Standing Liberty Quarter	\$2,000	\$4,000	\$3,000	\$6,000
Washington Quarter Silver	\$75	\$150	\$100	\$250
State Quarter	N/A	\$25	N/A	\$50
Proof Clad Quarter	N/A	\$4,000	N/A	\$5,000
Barber Half	\$2,500	\$3,500	\$3,000	\$5,000
Walking Liberty Half	\$3,000	\$5,000	\$4,000	\$7,000
Franklin Half	\$1,500	\$3,000	\$2,000	\$4,000
Kennedy Half Silver	\$150	\$250	\$200	\$300
Kennedy Half Clad	\$40	\$60	\$50	\$75
Proof Clad Half	N/A	\$5,000	N/A	\$7,000
Morgan Dollar	\$200	\$500	\$400	\$1,000
Peace Dollar	\$4,000	\$6,000	\$6,000	\$7,500
IKE Dollar	\$100	\$150	\$150	\$200
SBA Dollar	\$50	\$75	\$100	\$200
Sac Dollar	N/A	\$300	N/A	\$500



# Mint Error News Price Guide

## Partial Collars



**P**artial collar strikes occur when there is a malfunction of the striking press. This causes the collar to be in an incorrect position. The lower die (usually the reverse die) is recessed in the collar. This allows the coin which is going to be struck to have a formed rim. After a coin is struck the lower die raises upwards, pushing the struck coin out of the collar and ejecting it. If a blank entering the collar is not properly seated, it will only have partial reeding as it is struck. The edge of this coin will have a partial reeding and a partial blank surface area. Recently, the Mint has installed new machinery where either die can be installed in either position.

Denomination	XF/AU	Unc
Large Cent	\$100	\$200
Flying Eagle Cent (1857 – 1858)	\$500	\$1,500
Indian Cent	\$35	\$100
Lincoln Cent 1930 and Earlier	\$30	\$100
Lincoln Cent 1943 Steel	\$25	\$50
Proof Lincoln Cent	N/A	\$750
3 Cent Nickel	\$150	\$500
3 Cent Silver	\$750	\$2,000
Shield Nickel	\$200	\$600
Liberty Nickel	\$50	\$150
Buffalo Nickel	\$50	\$75
Jefferson Nickel War Time	\$40	\$60
Proof Jefferson Nickel	N/A	\$1,000
Seated Half Dime Legend	\$750	\$1,500
Seated Dime Legend	\$500	\$1,250
Barber Dime	\$75	\$150
Mercury Dime	\$30	\$100
Proof Clad Dime	N/A	\$1,250
Barber Quarter	\$300	\$750
Standing Liberty Quarter	\$1,250	\$2,000
Washington Quarter Silver	\$40	\$75
State Quarter	N/A	\$15
Proof Clad Quarter	N/A	\$1,500
Barber Half	\$1,000	\$1,500
Walking Liberty Half	\$1,500	\$3,500
Franklin Half	\$500	\$1,000
Kennedy Half Silver	\$50	\$100
Kennedy Half Clad	\$20	\$30
Proof Clad Half	N/A	\$2,000
Morgan Dollar	\$150	\$300
Peace Dollar	\$1,000	\$2,500
IKE Dollar	\$50	\$100
SBA Dollar	\$20	\$30
Sac Dollar	N/A	\$100

# Mint Error News Price Guide

## Uniface Strikes

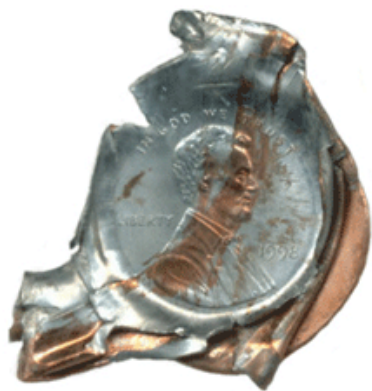


Uniface coins occur when there have been two blank planchets in the press at the same time. The other blank will obstruct the die on either the obverse or reverse side, which will prevent it from having that design on the coin. There are many different variations involving uniface errors. In addition to having a 100% blank obverse or reverse, a coin can be struck off-center, with a blank planchet in the collar which will obstruct one side of the off-center. There are also mated pairs which have a combination of multiple errors which can include a side which is uniface. Finally, there are uniface strikes due to a die cap which adhered to the die, forming itself in the shape of a die and striking blank planchets.

Denomination	Uniface Obverse XF	Uniface Obverse Unc	Uniface Reverse XF	Uniface Reverse Unc
Large Cent	\$1,500	\$4,000	\$1,250	\$3,000
Indian Cent	\$1,250	\$3,000	\$1,000	\$2,500
Lincoln Cent 1943 Steel	\$250	\$500	\$200	\$400
Lincoln Cent Wheat Ears	\$50	\$100	\$40	\$75
3 Cent Nickel	\$1,500	\$3,000	\$1,250	\$2,500
Shield Nickel	\$1,750	\$4,000	\$1,500	\$3,000
Liberty Nickel	\$2,000	\$3,500	\$1,500	\$3,000
Buffalo Nickel	\$2,250	\$3,000	\$2,000	\$2,500
Jefferson Nickel War Time	\$300	\$750	\$250	\$500
Jefferson Nickel	\$20	\$40	\$20	\$40
Barber Dime	\$2,000	\$3,000	\$1,500	\$2,500
Mercury Dime	\$1,500	\$2,500	\$1,250	\$2,250
Roosevelt Dime Silver	\$100	\$150	\$100	\$150
Roosevelt Dime Clad	\$40	\$75	\$35	\$60
Washington Quarter Silver	\$400	\$750	\$350	\$500
Washington Quarter Clad	\$100	\$125	\$75	\$100
State Quarter	N/A	\$300	N/A	\$500
Kennedy Half Clad	\$750	\$1,000	\$500	\$750
IKE Dollar	\$2,000	\$3,000	\$1,750	\$2,500
SBA Dollar	N/A	\$1,000	N/A	\$750
Sac Dollar	N/A	\$1,500	N/A	\$1,000

# Mint Error News Price Guide

## Bonded Coins



**B**onded coins occur when the feeder system, which supplies blank planchets to the coin press, malfunctions and jams. When this occurs, a struck coin is not properly ejected and another planchet is fed into the collar and is struck. This struck coin will land on top of the previously unejected strike. These coins will then crush and bond together. This may occur many times as more coins bond.

Denomination	2 Planchets	3-4 Planchets
Lincoln Cent Wheat Ears	\$2,500	–
Lincoln Cent Memorial	\$400	\$1,000
Jefferson Nickel	\$600	\$1,500
Roosevelt Dime Silver	\$1,000	–
Roosevelt Dime Clad	\$600	\$2,000
Washington Quarter Silver	\$2,500	–
Washington Quarter Clad	\$1,500	–
State Quarter	\$5,000	–
Kennedy Half Silver	\$10,000	–
Kennedy Half Clad	\$7,500	–
IKE Dollar	–	–
SBA Dollar	–	–
Sac Dollar	–	–

# Mint Error News Price Guide

## Coins Struck on Feeder Finger Tips



After a recent tour of the U.S. Mint at Philadelphia, it was discovered that the minting process had changed to some degree. One of the changes was that “feeder fingers” were used during the striking of all denominations of U.S. coins. Prior to this tour, U.S. coins that were struck on feeder finger tips were authenticated and described as being struck on aluminum scrap. Coins from all modern denominations have been discovered that were struck on the tips of these feeder fingers.

Denomination	Small	Medium	Large
Lincoln Cent Memorial	\$2,500	\$3,500	\$5,000
Jefferson Nickel	\$3,000	\$4,500	\$6,000
Roosevelt Dime Clad	\$3,000	\$6,000	\$7,500
Washington Quarter Clad	\$4,000	\$6,000	\$7,500
State Quarter	\$4,500	\$6,500	\$8,500
Kennedy Half Clad	–	–	–
SBA Dollar	–	–	\$12,500
Sac Dollar	\$4,500	\$7,500	\$10,000

# Mint Error News Price Guide

## Struck Fragments



The blanking press takes the coils of metal strips and punches blanks out of it, ejecting the webbing at the other end. The webbing is cut into small scrap pieces to be melted and recycled. Occasionally a scrap piece will be mixed with the blank planchets and struck by the dies. Struck fragments are rare in the larger denominations. These can be uniface or die struck both sides and are very rare on type coins.

Denomination	Uniface	Die Struck Both Sides
Indian Cent	–	\$4,000
Lincoln Cent Wheat Ears	\$750	–
Lincoln Cent Memorial	\$75	\$125
3 Cent Nickel	–	\$7,500
Jefferson Nickel	\$100	\$200
Roosevelt Dime Silver	\$300	\$750
Roosevelt Dime Clad	\$150	\$250
Washington Quarter Silver	\$750	–
Washington Quarter Clad	\$200	\$300
State Quarter	\$750	\$1,000
Kennedy Half Silver	–	–
Kennedy Half Clad	\$750	\$1,250
IKE Dollar	–	–
SBA Dollar	\$2,000	\$4,000
Sac Dollar	–	–

# Mint Error News Price Guide

## Mated Pairs



**M**ated pairs involve two individual coins with different errors that were struck together at the same time. Mated pair error combinations can be found in most error types and come in many shapes and sizes. Mated pairs can be overlapped when one of the coins is struck off-center on top of another coin. Another type involves a brockage where a struck coin was perfectly centered on a blank and restruck. Some mated pairs involve a die cap where the cap and brockage coin are discovered together, but this is a scarce find.

The rarest mated pair type involves two die caps (obverse and reverse) where both dies were capped at the same time and both die caps are mated. This last type is extremely rare and there are only a few known examples of mated pairs involving an

obverse die cap and reverse die cap. There are several of these mated pairs known on Kennedy Halves including two dated 1976, which is the Bicentennial year. One of the most spectacular mated pairs involve two Barber Dimes, an obverse die cap mated to a reverse die cap and are unique.

Mated pairs can also involve an off-metal where a smaller blank planchet or smaller struck coin was struck on top of a larger coin. This type is extremely rare. The most spectacular pair known is a double struck Franklin Half which was mated to a Lincoln Cent. The Lincoln Cent blank was on top of the obverse of the struck Franklin Half. This pair was then struck together. It is unique.

Denomination	Overlapping	Full Brockage	Die Cap	2 Die Caps
Lincoln Cent Wheat Ears	\$1,000	\$1,500	–	–
Lincoln Cent Memorial	\$200	\$300	\$500	\$750
Liberty Nickel	–	\$20,000	–	–
Jefferson Nickel (pre War Time)	–	–	–	\$15,000
Jefferson Nickel	\$350	\$500	\$650	\$1,000
Barber Dime	–	–	–	\$40,000
Roosevelt Dime Silver	\$1,000	\$2,000	\$1,500	–
Roosevelt Dime Clad	\$500	\$750	\$1,250	\$2,000
Washington Quarter Silver	\$2,000	–	–	–
Washington Quarter Clad	\$1,000	\$2,500	–	–
State Quarter	\$3,000	\$5,000	\$7,500	–
Kennedy Half Silver	–	–	\$10,000	–
Kennedy Half Clad	\$7,500	\$8,500	\$10,000	\$12,500
IKE Dollar	–	–	–	–
SBA Dollar	\$7,500	–	–	–
Sac Dollar	–	–	–	–

# Mint Error News Price Guide

## Transitional Errors



A transitional error occurs when a coin is struck on a planchet from a previous year with different metal composition. The most famous transitional is a 1943 copper cent struck on a 1942 copper blank. 1943 cents were struck in steel because of the copper shortage during World War II. Other famous transitionals include 1965 coinage struck in silver instead of clad.

There are also transitionals struck on blanks for the next year. An example is 1964 coinage in clad instead of silver. Most recently, transitionals were discovered involving the SBA and Sacagawea Dollars of 1999 and 2000. There are eight known 1999 SBA Dollars struck on the brass planchet for the 2000 Sacagawea Dollar, and four known 2000 Sacagawea Dollars struck on a clad planchet for the 1999 SBA Dollar.

Denomination	Off-Metal Planchet	Circulated	AU	Unc	Choice Unc – Gem
Lincoln Cent 1943 Transitional	Copper Cent Planchet	\$40,000 +	\$60,000 +	\$85,000 +	\$100,000 +
Lincoln Cent 1944 Transitional	Steel Cent Planchet	\$7,500	\$12,500	\$17,500	\$25,000
Lincoln Cent 1964 Transitional	Clad Dime Planchet	\$2,500	\$4,000	\$5,000	\$6,500
Lincoln Cent 1965 Transitional	Silver Dime Planchet	\$2,750	\$4,500	\$6,000	\$7,500
Roosevelt Dime 1964 Transitional	Clad Dime Planchet	\$5,000	\$6,500	\$7,500	\$8,500
Roosevelt Dime 1965 Transitional	Silver Dime Planchet	\$5,000	\$6,500	\$7,500	\$8,500
Washington Quarter 1964 Transitional	Clad Quarter Planchet	\$5,000	\$6,500	\$7,500	\$8,500
Washington Quarter 1965 Transitional	Silver Quarter Planchet	\$5,000	\$6,500	\$7,500	\$8,500
Kennedy Half 1964 Transitional	Clad Half Planchet	\$5,000	\$6,000	\$7,000	\$9,000
Kennedy Half 1965 Transitional	Silver Half Planchet	\$5,000	\$6,500	\$7,500	\$10,000
Kennedy Half 1964 Transitional	Clad Quarter Planchet	\$5,000	\$6,000	\$7,500	\$8,500
Kennedy Half 1965 Transitional	Silver Quarter Planchet	\$6,000	\$7,500	\$8,000	\$9,000
Ike Dollar Transitional	40% Silver Planchet	\$2,750	\$3,000	\$3,500	\$4,000
SBA Dollar Transitional	Sacagawea Planchet	N/A	N/A	\$12,500	\$15,000
Sacagawea Dollar Transitional	SBA Planchet	N/A	N/A	\$12,500	\$15,000

# Mint Error News Price Guide

## U.S. Gold Errors



Major mint errors on U.S. Gold coins are the most prized category of all mint errors. Gold errors are very rare and a few have traded in the \$75,000 to \$100,000 range. Even a broadstruck U.S. Gold coin can easily sell for \$15,000 to \$30,000 compared to a broadstruck Cent, Nickel, Dime or Quarter which all sell for well under \$10. Many serious collectors of Gold Errors have to wait patiently for months and sometimes even years to acquire that one special piece for their collection.

The prices listed here are for common dates in AU-Unc. Better dates and errors that are in gem condition are worth considerably more.

Denomination	Partial Collar	Broadstruck	Clipped Planchet	3% - 5% Off-Center	10% - 15% Off-Center
\$1 Gold Type 1	\$5,000	\$10,000	\$5,000	\$12,500	\$20,000
\$1 Gold Type 2	\$6,000	—	\$12,500	—	—
\$1 Gold Type 3	\$4,000	\$7,500	\$5,000	\$10,000	\$20,000
\$2½ Liberty	\$5,000	\$7,500	\$4,000	\$10,000	\$15,000
\$2½ Indian	—	—	\$4,000	\$7,500	\$12,500
\$3 Indian	\$7,500	\$20,000	\$7,500	—	—
\$5 Liberty	\$6,000	\$12,500	\$6,000	\$15,000	\$25,000
\$5 Indian	—	—	\$6,000	\$15,000	\$30,000
\$10 Liberty	\$10,000	\$20,000	\$7,500	\$25,000	\$40,000
\$10 Indian	—	—	\$7,500	\$25,000	\$40,000
\$20 Liberty	\$10,000	\$25,000	\$10,000	\$30,000	\$150,000
\$20 St. Gaudens	—	—	\$10,000	—	—
\$5 American Eagle	\$1,000	\$2,000	\$750	\$2,500	\$3,500
\$10 American Eagle	\$1,250	\$2,500	\$1,000	\$3,000	\$3,500
\$25 American Eagle	\$1,500	\$3,000	\$1,500	\$3,500	\$5,000
\$50 American Eagle	\$2,000	\$4,000	\$2,000	\$5,000	\$7,500



# Mint Error News Price Guide

## Indents



An indent error occurs when two blanks are fed inadvertently into the same collar, with one blank partly overlaying on top of the other. When the hammer die strikes this combination, the upper blank will be forced into the lower blank, creating a depression which is shaped similar to the upper blank. A scarce type of indent occurs when a blank intended for one denomination lands on top of a blank from a different denomination.

Denomination	10% - 25% XF	30% - 50% XF	10% - 25% Unc	30% - 50% Unc
Large Cent	\$300	—	—	—
Indian Cent	\$250	\$500	\$400	\$650
Lincoln Cent 1943 Steel	\$100	\$300	\$175	\$500
Lincoln Cent Wheat Ears	\$30	\$75	\$75	\$125
3 Cent Nickel	\$500	\$1,250	\$1,500	\$3,000
Shield Nickel	\$1,000	\$1,500	\$2,000	\$3,000
Liberty Nickel	\$400	\$1,000	\$750	\$1,500
Buffalo Nickel	\$300	\$1,000	—	—
Jefferson Nickel War Time	\$200	\$400	\$400	\$750
Jefferson Nickel	\$10	\$25	\$15	\$30
Barber Dime	\$1,000	\$2,000	\$1,500	\$3,000
Mercury Dime	\$300	\$750	\$500	\$1,500
Roosevelt Dime Silver	\$30	\$60	\$50	\$100
Roosevelt Dime Clad	\$10	\$20	\$15	\$30
Washington Quarter Silver	\$100	\$200	\$150	\$300
Washington Quarter Clad	\$25	\$50	\$35	\$100
State Quarter	N/A	N/A	\$200	\$350
Kennedy Half Clad	\$150	\$300	\$200	\$400
IKE Dollar	\$350	\$1,000	\$500	\$1,500
SBA Dollar	N/A	N/A	\$250	\$500
Sac Dollar	N/A	N/A	\$400	\$750

# Mint Error News Price Guide

## Capped Dies



A capped die is caused when a struck coin sticks to the upper hammer die. Once the coin is struck to the die face, the reverse of the struck coin becomes the new die face. When the next blank is fed into the collar and the strike occurs, the reverse design of the adhered struck coin impresses itself into the new blank. This struck coin is a brockage strike. The coin that adhered to the upper die is known as a die cap. This process repeats itself as more coins are struck by the cap. The greater the number of strikes, the higher the cap metal will be pushed around the upper die shaft. Eventually, the cap brakes away from the die in the shape of a thimble.

Denomination	Obverse Cap XF	Obverse Cap Unc	Reverse Cap XF	Reverse Cap Unc
Large Cent	\$12,500	\$15,000	—	—
Indian Cent 1859	\$10,000	\$15,000	—	—
Indian Cent 1860-1864	\$8,500	\$12,500	—	—
Indian Cent 1864-1909	\$6,500	\$10,000	\$5,000	\$7,500
Lincoln Cent 1943 Steel	—	—	—	—
Lincoln Cent Wheat Ears	\$1,000	\$1,500	\$500	\$750
Lincoln Cent Memorial	\$150	\$200	\$50	\$100
2 Cent Piece	\$12,500	\$20,000	\$10,000	\$15,000
3 Cent Nickel	—	—	—	—
Shield Nickel	—	—	—	—
Liberty Nickel	\$12,500	\$20,000	—	—
Buffalo Nickel (1 Known)	—	\$30,000	—	—
Jefferson Nickel War Time	\$10,000	—	—	—
Jefferson Nickel	\$200	\$350	\$150	\$250
Barber Dime	\$12,500	\$15,000	\$7,500	\$10,000
Mercury Dime (2 Known)	\$6,500	\$10,000	—	—
Roosevelt Dime Silver	\$750	\$1,250	\$500	\$750
Roosevelt Dime Clad	\$200	\$400	\$200	\$250
Barber Quarter	\$15,000	\$20,000	—	—
Washington Quarter Silver	\$1,500	\$2,500	\$1,500	\$2,000
Washington Quarter Clad	\$350	\$500	\$250	\$350
State Quarter	N/A	\$1,000	N/A	\$600
Kennedy Half Silver	\$3,000	\$5,000	\$2,000	\$3,000
Kennedy Half Clad	\$2,000	\$3,500	\$1,500	\$2,000
Kennedy Half Bicentennial	\$2,500	\$4,000	\$1,750	\$2,500
IKE Dollar	—	\$20,000	—	—
SBA Dollar	N/A	\$20,000	N/A	\$15,000
Sac Dollar	N/A	\$20,000	N/A	\$15,000

# Mint Error News Price Guide

## Die Adjustment Strikes



**D**ie adjustment strikes are also known as die trials. This error occurs when a coin is struck from the press with very little pressure. When the press is being set up and adjusted, extremely weak strikes occur as the strike pressure reaches its optimum level. These die trials are destroyed after being struck and are rarely found in circulation.

Denomination	XF/AU	Unc
Indian Cent	\$3,000	\$4,000
Lincoln Cent Wheat Ear	\$200	\$300
Lincoln Cent 1943 Steel	\$750	\$1,500
Lincoln Cent Memorial	\$50	\$75
2 Cent	\$5,000	—
Liberty Nickel	\$3,000	\$5,000
Buffalo Nickel	\$4,000	\$7,500
Jefferson Nickel War Time	\$1,250	\$2,000
Jefferson Nickel	\$75	\$100
Proof Jefferson Nickel	N/A	\$4,000
Barber Dime	\$4,000	\$5,000
Mercury Dime	\$3,500	\$5,000
Roosevelt Dime Silver	\$350	\$500
Roosevelt Dime Clad	\$100	\$125
Seated Quarter	\$10,000	\$15,000
Standing Liberty Quarter	\$15,000	\$20,000
Washington Quarter Silver	\$500	\$750
Washington Quarter Clad (Pre-State)	\$125	\$150
State Quarter	N/A	\$250 +
Walking Liberty Half	\$10,000	\$12,500
Kennedy Half Silver	\$500	\$750
Kennedy Half Clad	\$200	\$250
Proof Kennedy Half 40% Silver	N/A	\$5,000
Proof Kennedy Half Clad	N/A	\$4,000
Morgan Dollar	\$10,000	\$15,000
Peace Dollar	\$10,000	\$15,000
IKE Dollar	\$300	\$400
IKE Dollar Bicentennial	\$350	\$500
SBA Dollar	N/A	\$500
Sac Dollar	N/A	\$1,000

# Mint Error News Price Guide

## Double Denominations



One of the most expensive, popular, and desired types of errors are the double denominations. This error happens when a coin is struck on a previously struck coin of a smaller denomination. Examples are a cent on a struck dime, and a nickel on a struck cent. The most dramatic are those with considerable design visible from the original strike. There are a few known double denominations with different dates.

Denomination	Struck On	Circulated	AU	Unc
Lincoln Cent Wheat Ears	Mercury Dime	\$6,000	–	–
Lincoln Cent Wheat Ears	Roosevelt Dime	\$4,000	–	–
Lincoln Cent Wheat Ears	Foreign Coin	\$2,000	\$2,500	–
Lincoln Cent Memorial	Roosevelt Dime Silver	\$3,000	\$4,500	\$6,000
Lincoln Cent Memorial	Roosevelt Dime Clad	N/A	N/A	\$500
Lincoln Cent Memorial	Foreign Coin	N/A	600	\$750
Jefferson Nickel	Lincoln Cent Wheat Ears	\$1,500	\$2,000	\$2,500
Jefferson Nickel	Lincoln Cent Memorial	\$500	\$600	\$750
Jefferson Nickel	Foreign Coin	\$1,000	\$1,250	\$1,500
Jefferson Nickel	Roosevelt Dime	\$1,000	\$1,250	\$1,500
Roosevelt Dime Silver	Foreign Coin	\$4,000	\$5,000	\$7,500
Roosevelt Dime Clad	Foreign Coin	\$3,000	\$4,000	\$5,000
Washington Quarter Silver	Lincoln Cent Wheat Ears	\$3,000	\$4,000	\$6,000
Washington Quarter Silver	Lincoln Cent Memorial	\$2,500	\$3,000	\$3,500
Washington Quarter Silver	Foreign Coin	\$2,500	\$3,000	\$3,500
Washington Quarter Silver	Jefferson Nickel	\$3,000	\$4,000	\$6,000
Washington Quarter Silver	Roosevelt Dime Silver	\$2,500	\$3,000	\$3,500
Washington Quarter Clad	Lincoln Cent Memorial	\$2,500	\$3,000	\$3,500
Washington Quarter Clad	Foreign Coin	\$2,000	\$2,500	\$3,000
Washington Quarter Clad	Jefferson Nickel	\$2,500	\$3,000	\$3,500
Washington Quarter Clad	Roosevelt Dime Clad	\$2,000	\$2,500	\$3,000
State Quarter	Jefferson Nickel	N/A	\$5,000	\$6,000
State Quarter (Extremely Rare)	Any Other Denomination	N/A	\$10,000 +	–
Kennedy Half (Extremely Rare)	Any Denomination	–	–	–
IKE Dollar (Extremely Rare)	Any Denomination	–	–	–
Sac Dollar	Maryland State Quarter	N/A	\$4,500	\$5,500

# Mint Error News Price Guide

## Brockages



A brockage error can only occur when there are two coins involved. One of the coins involved will always be a struck coin which has not ejected properly. That struck coin will find its way back between the dies and will be struck next to a blank planchet which was fed into the collar. The image of that first struck coin will be impressed into that side of the blank planchet. The result will be a second coin which has images of the first coin impressed into it. Those images will be pressed into the coin and the image will be in reverse. This incuse sunken image is known as a brockage.

Denomination	50% Brockage XF	100% Brockage XF	50% Brockage Unc	100% Brockage Unc
Large Cent	\$600	\$1,000	\$3,000	–
Indian Cent	\$500	\$1,250	\$1,500	\$4,000
Lincoln Cent 1943 Steel	\$350	\$500	\$650	\$1,000
Lincoln Cent Wheat Ears	\$125	\$200	\$200	\$350
3 Cent Nickel	\$1,250	\$2,000	\$3,500	\$5,000
3 Cent Silver	\$2,000	\$3,000	\$3,000	\$6,000
Shield Nickel	\$1,500	\$2,500	\$3,500	–
Liberty Nickel	\$1,250	\$2,250	\$2,000	–
Buffalo Nickel	\$2,000	–	–	–
Jefferson Nickel War Time	\$250	\$750	\$750	–
Jefferson Nickel	\$50	\$75	\$50	\$150
Barber Dime	\$2,500	\$3,500	\$5,000	\$7,500
Mercury Dime	\$1,000	\$2,000	\$1,500	\$4,000
Roosevelt Dime Silver	\$100	\$200	\$150	\$250
Roosevelt Dime Clad	\$50	\$100	\$75	\$150
Washington Quarter Silver	\$200	\$500	\$500	\$1,000
Washington Quarter Clad	\$75	\$150	\$150	\$250
State Quarter	N/A	N/A	\$750	\$1,500
Kennedy Half Clad	N/A	N/A	\$650	\$1,500
IKE Dollar	\$1,500	\$2,000	\$3,000	\$5,000
SBA Dollar	N/A	N/A	\$500	\$1,500
Sac Dollar	N/A	N/A	\$1,500	–

# Mint Error News Price Guide

## Double & Multiple Strikes



When a blank planchet is struck by the dies, the normal procedure is for the feeders to eject the struck coin out of the collar and into a chute. If there is a malfunction and the struck coin isn't ejected, it may receive a second or third strike by the dies. A multiple struck coin can happen in many ways and have many combinations of errors.

Denomination	XF/AU	Unc
Large Cent	\$1,000	–
Indian Cent	\$600	\$1,000
Lincoln Cent 1930 and Earlier	\$850	\$1,500
Lincoln Cent 1943 Steel	\$400	\$1,000
Proof Lincoln Cent	N/A	\$4,000
3 Cent Nickel	\$2,000	\$3,500
Liberty Nickel	\$4,000	\$10,000
Buffalo Nickel	\$6,000	\$10,000
Jefferson Nickel War Time	\$750	\$2,000
Proof Jefferson Nickel	N/A	\$6,000
Barber Dime	\$4,000	\$10,000
Mercury Dime	\$3,500	\$8,500
Proof Clad Dime	N/A	\$6,000
Standing Liberty Quarter	\$12,500	\$20,000
Washington Quarter Silver	\$200	\$350
State Quarter	N/A	\$350 – \$750
Proof Clad Quarter	N/A	\$7,500
Walking Liberty Half	\$7,500	\$12,500
Franklin Half	\$5,000	\$10,000
Kennedy Half Silver	\$1,500	\$2,500
Kennedy Half Clad	N/A	\$750
Proof Kennedy Half Clad	N/A	\$7,500
Morgan Dollar	\$12,500	\$20,000
Peace Dollar	\$15,000	\$25,000
IKE Dollar	\$2,000	\$3,000
SBA Dollar	N/A	\$1,000 – \$2,500
Sac Dollar	N/A	\$1,500 – \$3,000

# Mint Error News Price Guide

## Off-Center Strikes



Off-center coins are one of the most common and best known types of errors. This happens when a blank which is supposed to be fed into the press, lands in the collar improperly. When this occurs only part of the blank is between the upper and lower dies. When the dies strike the blank, only that part will be struck with a design.

Denomination	10% - 15% XF/AU	25% - 60% XF/AU	10% - 15% Unc	25% - 60% Unc
Large Cent	\$400	\$2,500	\$1,000	\$7,500
Flying Eagle Cent (1857 – 1858)	\$2,500	\$10,000	\$5,000	\$15,000
Indian Cent	\$100	\$400	\$200	\$600
Lincoln Cent 1930 and Earlier	\$75	\$300	\$150	\$750
Lincoln Cent 1943 Steel	\$40	\$250	\$100	\$500
Proof Lincoln Cent	N/A	N/A	\$1,500	\$3,000
3 Cent Nickel	\$300	\$1,500	\$600	\$3,500
3 Cent Silver	\$1,000	\$5,000	\$2,000	–
Shield Nickel	\$750	\$2,500	\$1,000	\$7,500
Liberty Nickel	\$250	\$1,000	\$500	\$2,500
Buffalo Nickel	\$250	\$750	\$400	\$1,500
Jefferson Nickel War Time	\$100	\$500	\$200	\$1,000
Proof Jefferson Nickel	N/A	N/A	\$2,000	\$5,000
Seated Half Dime Legend	\$3,000	\$7,500	\$5,000	\$15,000
Seated Dime Legend	\$2,000	\$7,000	\$3,500	\$10,000
Barber Dime	\$300	\$1,500	\$500	\$2,500
Mercury Dime	\$100	\$750	\$150	\$1,250
Proof Clad Dime	N/A	N/A	\$2,500	\$5,000
Barber Quarter	\$1,500	\$5,000	\$2,500	\$10,000
Standing Liberty Quarter	\$5,000	–	\$15,000	–
Washington Quarter Silver	\$50	\$100	\$75	\$150
State Quarter	N/A	N/A	\$75	\$300
Proof Clad Quarter	N/A	N/A	\$3,000	\$6,000
Barber Half	\$3,000	\$8,500	\$5,000	–
Walking Liberty Half	\$4,000	\$12,500	\$7,500	–
Franklin Half	\$2,500	\$4,000	\$3,500	\$6,000
Kennedy Half Silver	\$100	\$500	\$250	\$1,000
Kennedy Half Clad	\$60	\$250	\$100	\$400
Proof Clad Half	N/A	N/A	\$4,000	\$7,500
Morgan Dollar	\$3,000	\$13,500	\$7,500	\$20,000
Peace Dollar	\$7,500	\$15,000	\$8,500	\$30,000
IKE Dollar	\$125	\$1,250	\$150	\$2,000
SBA Dollar	N/A	N/A	\$100	\$500
Sac Dollar	N/A	N/A	\$1,000	\$3,500

# Mint Error News Price Guide

## Off-Metals



Off-metal and wrong planchet errors occur when a correctly made blank from one denomination is accidentally fed into a press for another denomination. Examples are a nickel struck on a cent planchet and a cent struck on a dime planchet. The coin struck on an incorrect blank will weigh exactly what the denomination of that blank would have been. An even more dramatic wrong planchet error is a coin struck on a previously struck coin of a different metal.

Denomination	Off-Metal Planchet	Circulated	AU	Unc	Choice Unc – Gem
Indian Cent	Foreign Planchet	\$1,000	\$1,500	\$3,000	\$5,000
Indian Cent	Dime Planchet	\$7,500	\$12,500	–	–
Lincoln Cent Before 1919	Dime Planchet	\$4,000	\$6,500	\$10,000	–
Lincoln Cent Before 1919	Foreign Planchet	\$1,500	\$3,000	\$6,000	–
Lincoln Cent 1919 – 1940	Dime Planchet	\$2,000	\$2,500	\$4,000	\$6,000
Lincoln Cent 1919 – 1940	Foreign Planchet	\$750	\$1,250	\$2,000	\$2,500
Lincoln Cent 1943 Steel	Dime Planchet	\$1,500	\$2,500	\$3,500	\$4,500
Lincoln Cent 1943 Transitional	Copper Cent Planchet	\$40,000 +	\$60,000 +	\$85,000 +	\$100,000 +
Lincoln Cent 1944 Transitional	Steel Cent Planchet	\$7,500	\$12,500	\$17,500	\$25,000
Lincoln Cent Wheat Ears (1941-1964)	Dime Planchet	\$500	\$600	\$1,000	\$1,500
Lincoln Cent 1965 and Later	Dime Planchet	\$125	\$150	\$200	\$350
Lincoln Cent 1964 Transitional	Clad Dime Planchet	\$2,500	\$4,000	\$5,000	\$6,500
Lincoln Cent 1965 Transitional	Silver Dime Planchet	\$2,750	\$4,500	\$6,000	\$7,500
Shield Nickel	Foreign Planchet	\$7,500	\$12,500	–	–
Shield Nickel	Cent Planchet	\$6,000	\$12,500	\$15,000	–
Liberty Nickel	Foreign Planchet	\$400	\$750	\$1,250	\$2,000
Liberty Nickel	Cent Planchet	\$2,000	\$3,000	\$6,000	\$7,500
Buffalo Nickel	Foreign Planchet	\$2,500	\$6,000	\$10,000	–
Buffalo Nickel	Cent Planchet	\$2,000	\$4,000	\$6,000	\$8,000
Jefferson Nickel Before 1950	Cent Planchet	\$250	\$500	\$750	\$1,000
Jefferson Nickel 1950 and Later	Cent Planchet	\$125	\$150	\$200	\$250
Jefferson Nickel 1943	Steel Cent Planchet	\$1,000	\$2,000	\$3,000	\$5,000
Jefferson Nickel 1964 and Earlier	Silver Dime Planchet	\$200	\$300	\$350	\$400
Jefferson Nickel 1965 and Later	Clad Dime Planchet	\$150	\$200	\$225	\$250
Roosevelt Dime Silver	Foreign Planchet	\$2,000	\$2,500	\$3,000	\$3,500
Roosevelt Dime Clad	Foreign Planchet	\$1,500	\$2,000	\$2,250	\$2,500
Roosevelt Dime 1964 Transitional	Clad Dime Planchet	\$5,000	\$6,500	\$7,500	\$8,500
Roosevelt Dime 1965 Transitional	Silver Dime Planchet	\$5,000	\$6,500	\$7,500	\$8,500
Washington Quarter Silver	Cent Planchet	\$300	\$400	\$500	\$750
Washington Quarter Silver	Nickel Planchet	\$300	\$400	\$500	\$600
Washington Quarter Clad	Cent Planchet	\$250	\$300	\$400	\$500
Washington Quarter Clad	Nickel Planchet	\$100	\$150	\$200	\$250
Washington Quarter	Silver Dime Planchet	\$300	\$400	\$500	\$650
Washington Quarter	Clad Dime Planchet	\$250	\$300	\$350	\$400
Washington Quarter 1964 Transitional	Clad Quarter Planchet	\$5,000	\$6,500	\$7,500	\$8,500
Washington Quarter 1965 Transitional	Silver Quarter Planchet	\$5,000	\$6,500	\$7,500	\$8,500
State Quarter	Cent Planchet	N/A	\$6,500	\$7,500	\$8,000
Delaware State Quarter	Nickel Planchet	N/A	\$500	\$650	\$750
All Other State Quarters	Nickel Planchet	N/A	\$1,000	\$1,250	\$1,500
State Quarter	Dime Planchet	N/A	\$5,000	\$5,500	\$6,000
Walking Half	Quarter Planchet	\$12,500	\$15,000	\$17,500	\$22,500
Walking Half	Foreign Planchet	\$10,000	\$12,500	\$17,500	\$20,000
Franklin Half	Cent Planchet	\$3,000	\$4,000	\$5,000	\$6,000
Franklin Half	Nickel Planchet	\$3,000	\$4,000	\$5,000	\$6,000
Franklin Half	Dime Planchet	\$3,500	\$4,500	\$5,500	\$6,500
Franklin Half	Quarter Planchet	\$600	\$750	\$1,000	\$1,250
Kennedy Half Silver 1964	Cent Planchet	\$1,000	\$1,250	\$1,500	\$2,000
Kennedy Half Silver 1964	Nickel Planchet	\$1,000	\$1,250	\$1,500	\$2,000
Kennedy Half Silver 1964	Dime Planchet	\$1,000	\$1,250	\$2,000	\$2,500
Kennedy Half Silver 1964	Quarter Planchet	\$400	\$500	\$600	\$750
Kennedy Half Clad	Cent Planchet	\$750	\$850	\$1,000	\$1,500
Kennedy Half Clad	Nickel Planchet	\$750	\$850	\$1,000	\$1,250
Kennedy Half Clad	Dime Planchet	\$750	\$850	\$1,000	\$1,400
Kennedy Half Clad	Quarter Planchet	\$350	\$400	\$450	\$500
Kennedy Half 1964 Transitional	Clad Half Planchet	\$5,000	\$6,000	\$7,000	\$9,000
Kennedy Half 1965 Transitional	Silver Half Planchet	\$5,000	\$6,500	\$7,500	\$10,000
Kennedy Half 1964 Transitional	Clad Quarter Planchet	\$5,000	\$6,000	\$7,500	\$8,500
Kennedy Half 1965 Transitional	Silver Quarter Planchet	\$6,000	\$7,500	\$8,000	\$9,000
Ike Dollar	Cent Planchet	\$3,000	\$3,750	\$5,000	\$6,000
Ike Dollar	Nickel Planchet	\$3,000	\$3,500	\$5,000	\$6,000
Ike Dollar	Dime Planchet	\$3,250	\$3,750	\$5,500	\$6,500
Ike Dollar	Quarter Planchet	\$2,750	\$3,000	\$4,000	\$4,500
Ike Dollar	Half Planchet	\$1,600	\$1,750	\$2,000	\$2,500
Ike Dollar	Foreign Planchet	\$900	\$1,000	\$1,250	\$1,500
Ike Dollar Transitional	40% Silver Planchet	\$2,750	\$3,000	\$3,500	\$4,000
SBA Dollar	Cent Planchet	N/A	\$1,750	\$2,250	\$3,000
SBA Dollar	Nickel Planchet	N/A	\$6,000	\$7,000	\$8,000
SBA Dollar	Dime Planchet	N/A	\$6,000	\$7,000	\$8,000
SBA Dollar	Quarter Planchet	N/A	\$600	\$850	\$1,000
Sac Dollar	Cent Planchet	N/A	\$8,000	\$9,000	\$10,000
Sac Dollar	Nickel Planchet	N/A	\$7,500	\$8,000	\$9,000
Sac Dollar	Dime Planchet	N/A	\$8,000	\$9,000	\$10,000
Sac Dollar	Quarter Planchet	N/A	\$1,500	\$2,000	\$2,500



# MINTERRORNEWS™

## Exclusive Discounts

Good for purchases on-line, eBay and at coin shows!

alscoins.com



**\$10 off a purchase of a mint error valued at \$100 or more from Al's Coins.**

Offer valid on purchases made from alscoins.com, eBay and at coin shows. This offer is good for any purchase made in the year 2005. One coupon per purchase. This coupon can not be used in conjunction with any other offer.

errorcointrader.com



**\$20 off a purchase of a mint error valued at \$200 or more from Error Coin Trader.**

Offer valid on purchases made from errorcointrader.com, eBay and at coin shows. This offer is good for any purchase made in the year 2005. One coupon per purchase. This coupon can not be used in conjunction with any other offer.

mikebyers.com



**\$250 off a purchase of a mint error valued at \$2,500 or more from Mike Byers.**

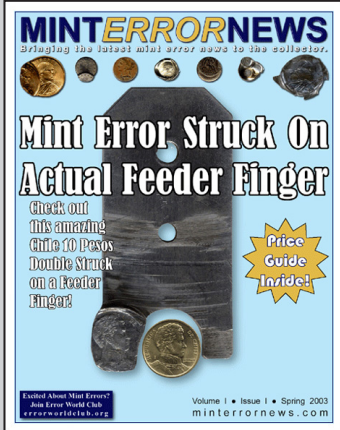
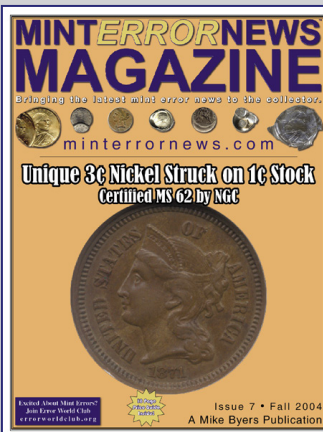
Offer valid on purchases made from mikebyers.com, eBay and at coin shows. This offer is good for any purchase made in the year 2005. One coupon per purchase. This coupon can not be used in conjunction with any other offer.

# MINTERRORNEWS MAGAZINE

Bringing the latest mint error news to the collector.

Issues of Mint Error News Magazine are available for you to read online at:  
**[minterrornews.com](http://minterrornews.com)**

Mike Byers is the Publisher and Editor of Mint Error News Magazine



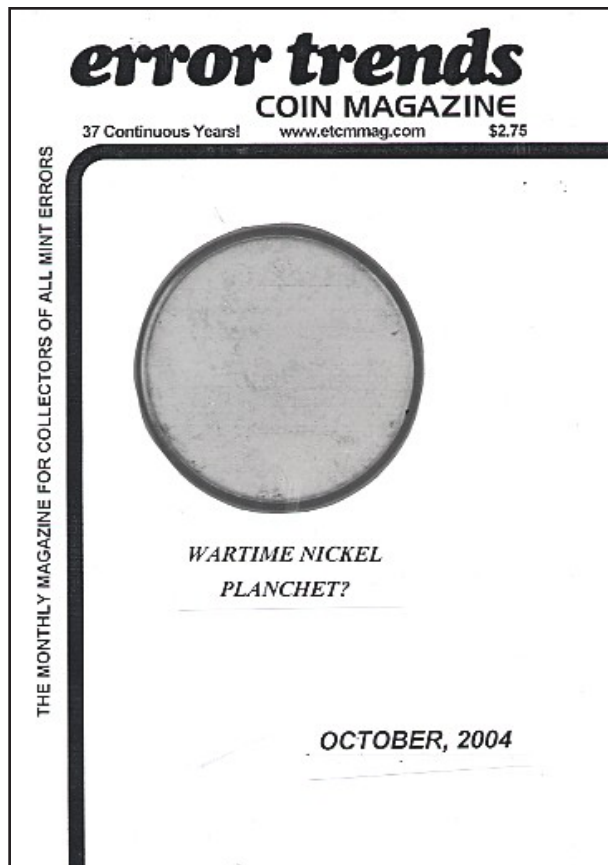
# error trends

## COIN MAGAZINE

Dedicated to serving the error coin hobby.

- Error coins
- Error Coin Trend Prices (Eight illustrated pages)
- Mistakes
- Mis-strikes
- Off-center errors
- Brockages
- Partial Collars
- Die Caps
- Cuds
- Missing Clad Layers

... and more!



## Subscribe to Error Trends Coin Magazine

**error trends** PO Box 158  
COIN MAGAZINE Oceanside NY 11572-0158

New  
 Renewal

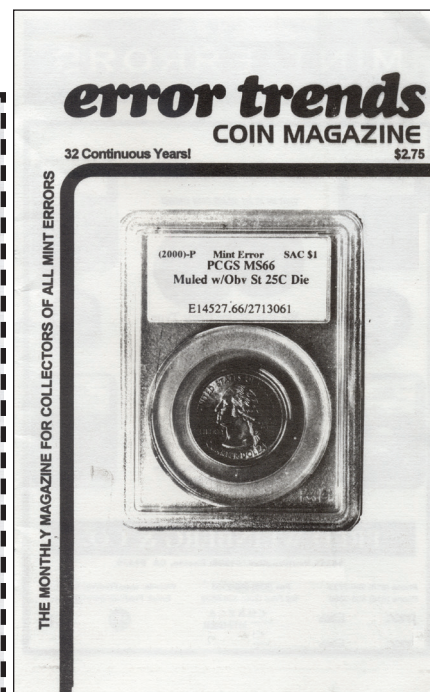
Dear Sirs,  
Please enter my subscription to **error trends** COIN MAGAZINE as follows:

1 Year: \$15.00     2 Years: \$28.00     3 Years: \$40.00  
 Single Sample Copy \$2.75 ppd.

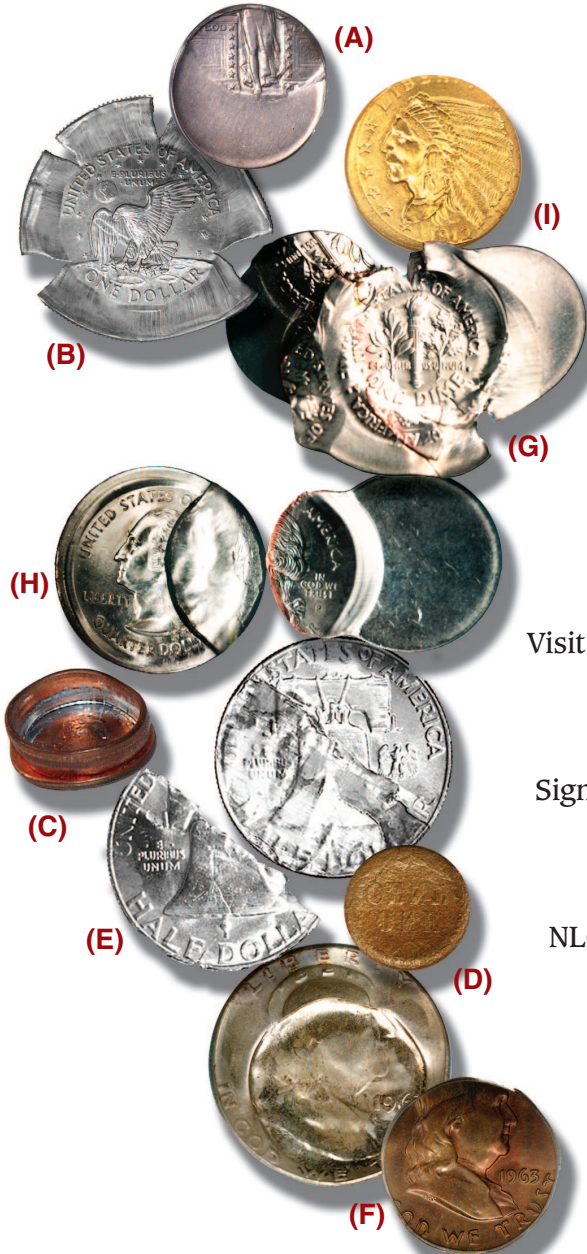
NAME \_\_\_\_\_  
ADDRESS \_\_\_\_\_  
CITY \_\_\_\_\_ STATE \_\_\_\_\_ ZIP \_\_\_\_\_ + \_\_\_\_\_

( Be sure to add "zip + four" zip code to assure more rapid mail delivery)

Please make all checks payable to Error Trends Coin Magazine or "ETCM". All payments from other countries in "US Funds" only. Additional postage charges required for other countries. Do not send cash through the mail. Thank you.



Visit [www.HeritageCoin.com](http://www.HeritageCoin.com) for your  
**ERROR COIN RESEARCH**  
**FREE MEMBERSHIP!**



Visit the [HeritageCoin.com](http://HeritageCoin.com)  
 website today  
 Easy to join  
 Free membership  
 Significant research tools  
 Easy to bid  
 Easy to buy  
 Winner of the  
 NLG's Best Commercial  
 Website Award!

These are only a sample of the thousands of error coins Heritage has handled. Consign your error coins today to the next Heritage Sale.

Look up these error coins in our Permanent Auction Archives for descriptions and full-color, enlargeable images:

- A. 2003 ANA National Money Show, lot 6963  
 1919 Quarter  
 Struck 50% Off Center  
 XF45 PCGS  
**REALIZED \$15,525**
- B. 2002 September Long Beach Sale, lot 9648  
 1999 SBA Dollar  
 Multiple Strike, Reeded Edge  
 MS65 PCGS  
**REALIZED \$6,900**
- C. 2002 New York Sale, lot 7290  
 1999 Cent  
 Die Cap With Second Coin Bonded  
 MS64 Red Uncertified  
**REALIZED \$920**
- D. 2002 February Long Beach Sale, lot 7300  
 Undated Struck Through  
 Capped Die Indian Cent  
 MS64 Brown PCGS  
**REALIZED \$1,265**
- E. 2002 FUN Sale, lot 9040  
 1963 Half Dollar  
 Split Planchet  
 AU58 Uncertified  
**REALIZED \$1,610**
- F. 2001 ANA Sale, lot 8658  
 1963 Half Dollar  
 Double Struck, Indented by a Cent Planchet  
 MS66 PCGS  
**REALIZED \$20,125**
- G. 2001 ANA Sale, lot 8651  
 1999-P Dime  
 Bonded Strike, Struck More Than 10 Times  
 MS64 Uncertified  
**REALIZED \$2,300**
- H. 2001 ANA Sale, lot 8657  
 1999 Mated Pair of Georgia Statehood Quarters  
 Partial Collar, Indent and Stretch Strike, Indent  
 MS64 Uncertified  
**REALIZED \$2,415**
- I. 2001 February Long Beach Sale, lot 7497  
 1912 Quarter Eagle  
 Struck 5% Off Center  
 MS64 NGC  
**REALIZED \$4,370**



Heritage Plaza, 100 Highland Park Village, 2nd Floor • Dallas, Texas 75205-2788  
 1-800-US COINS (800-872-6467) • 214-528-3500 • FAX: 214-443-8425  
[www.HeritageCoin.com](http://www.HeritageCoin.com) • e-mail: [Bids@HeritageCoin.com](mailto:Bids@HeritageCoin.com)  
[www.CurrencyAuction.com](http://www.CurrencyAuction.com) • e-mail: [Notes@CurrencyAuction.com](mailto:Notes@CurrencyAuction.com)

# Off-Center Gold Crown

This mint error was submitted by Martin Wettmark, a collector of major world errors. It is a Gold Crown from Gibraltar of Queen Elizabeth II struck 5% off-center.



# uspatterns.com

The Society of U.S. Pattern Collectors is dedicated to the study of many of the rarest coins struck at the U.S. Mint: patterns, die trials and experimental pieces.

Saul Teichman's  
Want List

Saul.Teichman@ey.com

I am looking for the following off-metal errors:

Wartime Nickel on a Copper Cent planchet.  
Bicentennial Half on a Cent planchet.  
Bicentennial Half on a Dime planchet.  
Kennedy Half on a Sacagawea Dollar planchet - if it exists.  
Ike Dollar on a Cent planchet.

Ike Dollar on a Nickel 5 Cent planchet.  
Ike Dollar on a Dime planchet.  
Ike Dollar on a Quarter planchet.  
Sacagawea Dollar on a Cent planchet.  
Sacagawea Dollar on a Nickel planchet.  
Sacagawea Dollar on a Dime planchet - if it exists.

# Pair of Barber Dime Die Caps Obverse and Reverse

This is a unique pair of Barber Dime Die Caps. They are both from the New Orleans Mint which produced very few Mint Errors. The Barber Dime obverse cap is one of 5 known for the series. The Barber Dime reverse cap is the only known reverse cap for the series, making this the only known set.

The Barber Dime obverse cap is an extremely deep die cap and barely fits in the PCGS holder. The reverse of this cap is a distorted impression of what was the raised design of the reverse. This cap formed incuse brockages on the obverse of many Barber Dimes that were being struck.

The Barber Dime reverse cap is also extremely deep and has a brockage. The obverse of this cap shows an incuse brockage design of the reverse of a struck Barber Dime cap. The obverse of this cap created counterbrockages on the reverse of Barber Dimes that were struck. A counterbrockage is a brockage from a brockage and is a very rare Mint Error.

It is exciting to have a unique set of both Barber Dime obverse and reverse caps. In addition, they are from the New Orleans Mint and have somehow survived over a hundred years. Truly the centerpiece of a Mint Error Collection.





# 1795 Flowing Hair Dollar Two Leaves Variety Struck on Flawed Planchet

by Mike Byers (mikebyers.com)



Major Mint Errors on Flowing Hair and Small Eagle Silver Dollars are extremely rare. This choice Mint State Flowing Hair Dollar is of the rarer two leaves variety.

This piece is virtually as struck with razor sharp detail, full cartwheel luster, light original gold and orange toning and with no rub on either side. It was struck on a planchet with major flaws on both sides. This coin never should have been struck, instead the blank should have been melted.

This Mint State Flowing Hair Dollar is well known in the Numismatic Community and has an impressive pedigree throughout the decades.

It was in a major U.S. Type Collection which sold in a Lester Merkin Auction. It was

also sold by Abe Kosoff, one of the premier Numismatists of the twentieth century. Julian Leidman also purchased and sold this Dollar many years ago.

The wholesale Coin Dealer Newsletter Quarterly lists this rarer two leaves variety at \$30,000 in MS 60. This coin is severely undergraded and almost every Professional Numismatist who viewed this coin graded it choice Mint State 63. It appears to have been graded conservatively due to the planchet flaws on both sides. Since it is correctly attributed as a Mint Error, the planchet flaws should not have influenced the grading.

This unusual type of Major Mint Error is on a choice Mint State Flowing Hair Dollar with a great pedigree.





# 1855 Large Cent Obverse Die Cap

There are only a handful of Large Cent caps known. This obverse die cap is very deep and barely fits in the NGC slab. The reverse is very spread out and created brockages on many Large Cents.

This is a very dramatic cap and it is almost in mint state condition.



# Harry E. Jones

## Rare Coins & Currency

Sell Harry Your Mistakes!!

Leading Dealer in Error Currency For Over 30 Years. Buying and Selling the Finest in Error Currency. Especially Want Errors on National Currency. Also Buying Uncut Sheets of Nationals Large and Small.

7379 Pearl Rd.  
Cleveland, OH 44130

440-234-3330

LM ANA PNG PCDA



# Rich Schemmer

specializing in rare error coins for the collector

[richerrors.com](http://richerrors.com)

[Richerrors@aol.com](mailto:Richerrors@aol.com)

# COINLINK



## Numismatic News & Rare Coin Web Site Directory

# coinlink.com

# 1866 5¢ J-517

## Double Struck Mule Pattern

by Mike Byers (mikebyers.com)

This pattern is a deliberate muling of two dies since each side has the inscription UNITED STATES OF AMERICA. The obverse die has the portrait of George Washington. The reverse is the regular die without rays, which was adopted in 1867 for the Shield Nickel.

This fascinating pattern muling was also double struck. There is a 5 degree rotation between the strikes on the obverse. The reverse shows a 45 degree rotation between the two strikes.

This is one of two known mulings of this pattern that are double struck. The other known example shows an 80 degree rotation on the reverse between the strikes.

There are many different Nickel patterns struck in 1866 using different die combinations. 1866 is considered one of the most fascinating years in the history of U.S. patterns.





# Double Struck Double Eagle

by Heritage Galleries & Auctioneers (heritagecoin.com)



This Double Struck Double Eagle was sold in auction by Heritage in their August 2004 Pittsburgh ANA Signature Sale. Here is the press release describing this incredible coin:

Dallas, Texas: One of just a handful of known double struck gold coins is being auctioned by Heritage at the Pittsburgh ANA convention, August 16-21, 2004. Heritage is the official auctioneer of the American Numismatic Association's National Money Show.

“This is a fabulous and incredibly rare error,” noted Heritage Vice President Jim Stoutjesdyk. “This Double Eagle has been certified MS60PL and is classified as Double Struck by ANACS. It features an exceptionally bold strike and highly reflective, proof-like fields with some light hairlines, as is typically seen in this grade. The surfaces are extremely lustrous and the color is rich and full.”

“Mint errors on United States' gold coins are very rare and in many respects are the *crème de la crème* of the error market,” continued Stoutjesdyk. “It's been struck at least twice, with a visible slight rotation between strikes. As a result, there is prominent doubling on the date and the stars, along with Liberty's profile and hair. The doubling is also seen on the reverse, although to a less prominent degree than the obverse.”

At least one major error and variety expert speculates that it was intended as a proof or as a trial strike of proof dies. Stoutjesdyk believes that “theories such as this only add to the mystery of the coin, and close inspection with a loupe rewards the viewer with prominent doubling on all of the obverse elements and invites one to form his or her own theory regarding its production.”

He adds, “errors on United States gold coins are rare by the nature of their production, which included heightened quality control measures. Even insignificant errors on gold coins are prized by numismatists. It is truly an event when a major error such as this crosses the block. Recently, a 1904 Double Eagle certified by PCGS as MS63 Double Struck in Collar sold in a well-publicized private transaction for \$102,000.” Attesting to the importance of this piece, Stoutjesdyk stated, “This is arguably the most important gold error that Heritage has had the pleasure of selling at auction. An error of this magnitude would surely be a highlight of any top collection and could be a centerpiece of a Double Eagle aficionado's cabinet.”



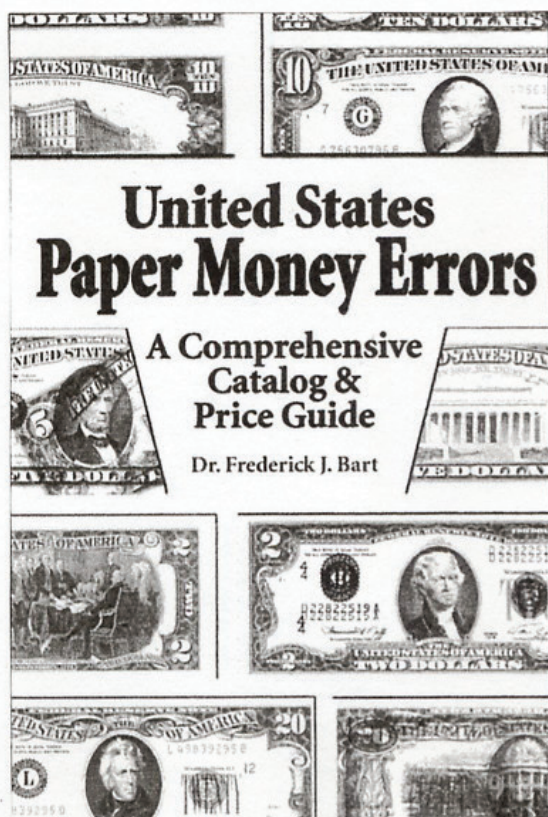
The LONG AWAITED SECOND EDITION of

# United States Paper Money Errors: A Comprehensive Catalog & Price Guide

by **FREDERICK J. BART**

foreword by **HARRY E. JONES**

Will be **READY to SHIP** in a **COUPLE** of **WEEKS ...RESERVE YOUR COPY** now  
published by **KRAUSE PUBLICATIONS**  
available from Krause Publications, their distributors, your supplier, or directly from the author



- **COMPREHENSIVE INFORMATION on US PAPER MONEY ERRORS**  
ranging from **DOUBLE DENOMINATIONS** to **INK SMEARS**
- **COMPLETELY RE-WRITTEN**
- **UP-to-DATE PRICE GUIDE**  
in **THREE GRADES**
- **550 PHOTOGRAPHS** (b & w) of **SMALL SIZE & LARGE SIZE ERRORS**
- **256 PAGES**, 6" x 9", softbound
- **HISTORICAL PHOTOGRAPHS**
- **BEHIND-the-SCENES** peeks at "INSIGHTS and INCIDENTS"
- **SUITED for both the ADVANCED COLLECTOR and the BEGINNER**
- **DATA for the RESEARCHER, CATALOGUER, and DEALER**

-----ORDER FORM-----

I wish to reserve--and am enclosing payment for--one copy of *United States Paper Money Errors* at \$24.95. My check will not be cashed until the book is ready to ship. I would like the book:

- autographed by the author  
 inscribed, as indicated below, and autographed

\_\_\_\_\_  
 \_\_\_\_\_  
 \_\_\_\_\_

Please mail the book to:

\_\_\_\_\_  
 \_\_\_\_\_  
 \_\_\_\_\_  
 \_\_\_\_\_



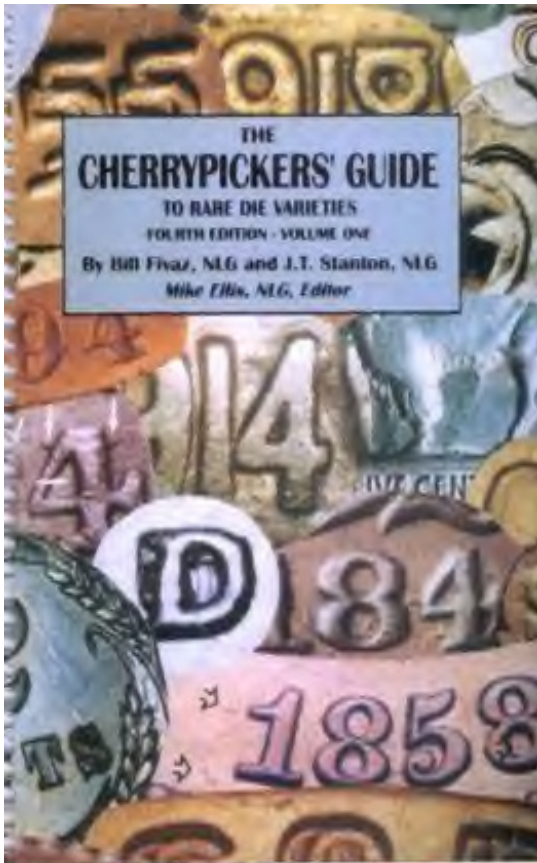
**Order your copy today!**

# *The Cherrypickers' Guide* *To Rare Die Varieties* Volume Two, Fourth Edition

The Second Volume of the Fourth Edition of *The Cherrypickers' Guide* is just around the corner. We are now accepting prepublication orders at a 20% discount off the retail price. To place your order, please visit [www.cherrypickersguide.com](http://www.cherrypickersguide.com). Or send an e-mail to [jtstanton@aol.com](mailto:jtstanton@aol.com) for instructions, or write to J. T. Stanton, P. O. Box 15487, Savannah, GA 31416-2187.

There are three versions being offered for this volume. The standard 5.5" x 8.5" page size coil bound, the most popular version. A hard bound version with a 5.5" x 8.5" page size (available approx. November, 2003). There will also be a new, large format version available. The copy will be the same as for the 5.5" x 8.5", but will be printed on an 8.5" x 11" page. Again coil bound, this version will allow about 1.5" space on all 4 sides of the copy for notes, plus will include extra note pages within the book. Those who like to keep detailed notes of their collection and of new varieties will find this version the most accommodating.

Only orders placed with J. T. Stanton either by mail, fax or via the web site will be autographed and numbered. If you have a copy of Volume One which is numbered, please note your Volume One book number and your Volume Two will also have the same book number. Payment by check, money order or PayPal only.



5.5" x 8.5" Coil bound \$39.95

5.5" x 8.5" Hard bound \$69.95

8.5" x 11" Large format, spiral bound \$64.95

P & H is \$3.50 for the first copy, and \$1.50 for each additional copy.  
Mailing will be via Media Mail.

For mail orders, send check or money order to:  
(PayPal account is [jtstanton@aol.com](mailto:jtstanton@aol.com))

J. T. Stanton  
P. O. Box 15487  
Savannah, GA 31416-2187

Phone: 912-355-1976  
Fax: 912-355-3399

E-mail: [jtstanton@aol.com](mailto:jtstanton@aol.com)

Website: [www.cherrypickersguide.com](http://www.cherrypickersguide.com)

# Fred Weinberg & Co.

Dealer in Major Mint Error Coins & Currency



[fredweinberg.com](http://fredweinberg.com)



## BUYING MAJOR ERROR COINS & CURRENCY

If you have a single major mint error coin, either a recent issue or an older type coin, or 1,000 Off-Center Cents, please contact us. We stock over 60,000 Major Mint Error Coins and constantly need to purchase Major Error Coins for our clientele (please note that we do not deal in or buy Die Varieties, Damaged Coins, Doubled Dies, Filled Dies, or Die Cracks).

We do buy Major Mint Errors - such as Off-Center, Off-Metals, Double Strikes, Clad Layers missing, Die Caps, Double Denomination, etc.

Because of the many differences in each Error Coin we request that you send scans of your coin(s) to us for our examination and firm offer.

Postal Correspondence:

Telephone/Fax:

16311 Ventura Blvd.

Phone: (818) 986-3733

Suite #1298

Toll-free: (800) 338-6533

Encino, California 91436

Fax: (818) 986-2153

e-mail: [fred@fredweinberg.com](mailto:fred@fredweinberg.com)

# fredweinberg.com

# Robert L. Astrich

P.O. Box 981

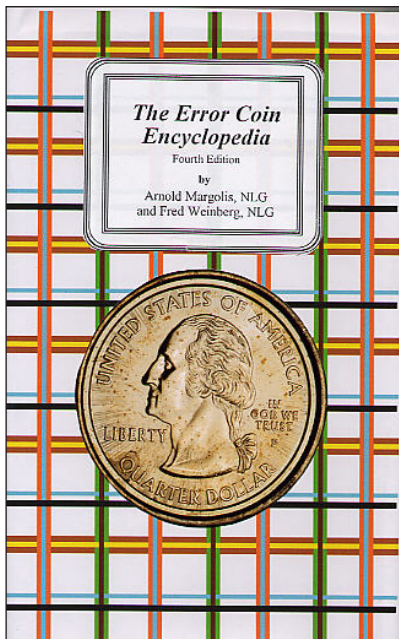
Hempstead, TX 77445

Office: (979) 826-2221 Fax: (979)826-6566

I BUY AND SELL MAJOR ERROR COINS, ALL U.S. COINS & EARLY FOREIGN CROWNS & GOLD, HIGH GRADE CERTIFIED MORGAN & PEACE DOLLARS, U.S. DATED GOLD & HI RELIEFS, EARLY 1936-42 PROOF SETS CERTIFIED & RAW.

I AM A STRONG BUYER OF ORIGINAL EARLY MINT SETS 1947-58, AND PAY STRONG PRICES FOR ORIGINAL ROLLS OF CENTS THRU HALF DOLLARS 1954 & EARLIER. I ALSO BUY ORIGINAL BU DOLLAR ROLLS. I AM A FULL TIME USER OF THE CERTIFIED COIN EXCHANGE AND THE COIN NET SYSTEMS. I AM AN ACTIVE BUYER OF LARGE COIN COLLECTIONS.

ALL TRANSACTIONS WILL REMAIN CONFIDENTIAL.



Entirely rewritten edition. 495 pages.  
Hard Cover 4th Edition: \$39.95 postpaid

Available from:

**Arnie Margolis  
&  
Fred Weinberg**

# Silver Towne L.P.

50 years of quality Tradition: Make new friends  
but keep the old - one is silver the other is gold.

[silvertowne.com](http://silvertowne.com)

**100 GREATEST  
U.S. COINS**



New Book - 100 Greatest U.S. Coins  
by Jeff Garrett and Ron Guth  
Order your copy today!  
**CoinFacts.com**

# Independent Coin Grading Company

## A Company Formed By Some Of The Industry's Top Graders.



KEITH LOVE, FOUNDER AND CEO

Only ICG offers you all this:

ICG's "No-grade, No-Fee" policy. We charge a \$5 processing fee if we "no grade" a coin.

Intercept Shield, Ultimate protection for your collectibles.

\$1 credit for returning our insert tags, (pre 1950 coins) and a 50¢ credit for all 1950 or later coins.

Quick turnaround times to preserve cash flows.

Sonically sealed, tamper-evident, attractive holder with our SECUREGRAM™ hologram system.

And, most important ... expert, consistent grading by the most respected names in the business.



Photo courtesy of mikebyers.com



Photo courtesy of mikebyers.com

### ICG

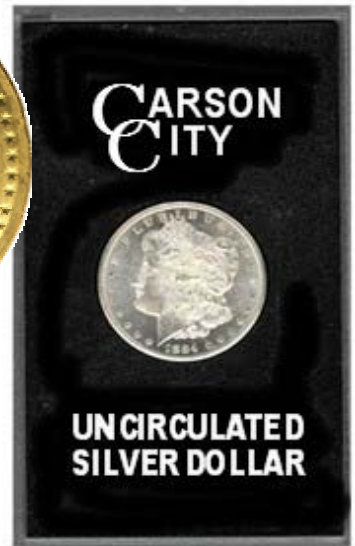
7901 East Belleview Ave., Suite 50  
Englewood, CO 80111  
877-221-4424 (Toll Free) - 303-221-5524 (Fax)

H  
O  
M  
E  
O  
F  
T  
H  
E  
A  
M  
A  
Z  
I  
N  
G  
B  
R  
O  
K  
E  
N  
C  
C

# NORTHERN NEVADA COIN

[www.brokencc.com](http://www.brokencc.com)

WE BUY & SELL  
RARE COINS.  
VISIT US ON THE  
WEB TO VIEW  
OUR  
EVER-CHANGING  
INVENTORY



3655 B RESERCH WAY  
CARSON CITY, NV 89706

**1-888-836-8DOLLAR**

**1-888-836-5527**

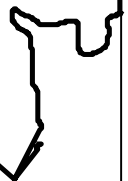
**1-775-884-1660**



MEMBER



MEMBER  
Northern Nevada,  
Inc.



# CoinFacts.com

Your Online Reference For U.S. Coins



**“The Ultimate Coin Book” by CoinFacts.com, Inc.  
Now Available on CD-Rom**

Our new CD-Rom is a mirror image of the CoinFacts website but with no download delays caused by slow Internet connections. In fact, no Internet connection is required at all, making the CoinFacts CD-Rom perfect for use in your home, office or even your portable computer at coin shows. Plop the CoinFacts CD-Rom in your PC and have immediate, lightning-fast access to the thousands of full color images and indispensable numismatic information. Please visit CoinFacts.com for more information and to purchase.

## eureka trading systems



## eurekatrading.com

## The Software Clinic

Specializing in numismatic  
website creation.



**Ray Gaudette**



**surok@adelphia.net**



# NORTHEAST NUMISMATICS INC. RARE COINS · PERSONAL SERVICE

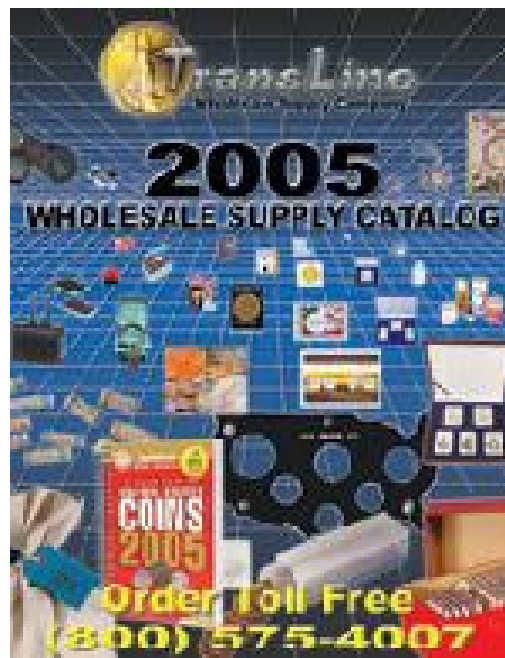
Northeast Numismatics  
10 Concord Crossing, Ste. 220  
Concord, MA 01742  
800-449-2646  
www.northeastcoin.com

Northeast Numismatics has an impressive inventory of over 1,200 U.S. and foreign coins. We have a strong selection of mint errors, both U.S. and foreign. And we carry every area of United States coinage from colonials through rare gold including type, commemoratives, silver dollars and much, in addition to our extensive inventory of world coins.

High quality “fresh” coins are what we are known for and take pleasure in offering. We constantly are hearing from our customers about our excellent prices and high customer service. 2003 is our 39th year of business, so order with complete confidence. Also, please keep in mind that we are always buying coins of all kinds, certified and uncertified, to fill our want lists.

Transline Wholesale Supply Company

*Wholesale Only 1-800-575-4007*



**Bart Crane**

**[translinesupply.com](http://translinesupply.com)**

**CALL TOLL FREE: (800) 575-4007**

**Business Hours**

**Monday - Friday: 7:30AM - 5:30PM PST**

# ERROR WORLD

Join the *hottest*

**Error Coin Club on the Net!**

**e r r o r w o r l d c l u b . o r g**

The Error World on-line coin club exists for the purpose of advancing the knowledge and the field of error coin collecting.

Error World is dedicated to the promotion, discussion and dissemination of facts and ideas about error coinage, both domestic and world-wide.

Error World exists as a vehicle to bring collectors of both foreign and domestic error coinage together in a professional and relaxed atmosphere where they can exchange information, display photos and engage in lively debate about error coinage.

---

Error World is a non-profit organization with all revenues being put back into the club to provide improved services to the members of the club.

Error World will, from time to time, accept contributions from designated Patrons in the form of contest prizes, and/or cash to be used to defray club expenses.

Error World will, from time to time, attempt to obtain sponsors from the numismatic field who will bring price saving offers to Error World members.

Mike Byers is the Patron of [errorworldclub.org](http://errorworldclub.org)



# MINTERRORNEWS™ MUSEUM

Enjoy viewing the major mint errors in our museum. These are exciting and dramatic examples of major mint errors that we wanted to share with our readers.

1999-P Connecticut Quarter  
40% Obverse Indent  
PCGS MS 64



1999-P New Jersey Quarter  
85% Obverse Indent  
PCGS MS 66



Washington Quarter  
Struck on 56% Scrap Planchet  
PCGS MS 64



(1976) Bicentennial Kennedy Half Dollar  
Die Adjustment Strike  
PCGS MS 61



1964 Washington Quarter  
20% Brockage & Broadstruck  
PCGS MS 64



SBA Dollar  
Struck 40% Off-Center  
ANACS MS 64



Lincoln Cent  
Struck Fragment  
ANACS MS 63 Red



1942/1 Mercury Dime  
Planchet Clip at K-5:30  
ICG EF 45



1940 Jefferson Nickel  
Double Struck in Collar  
PCGS MS 64



1879 Morgan Dollar  
Wire Struck in Reverse  
PCGS AU 50



1965 Lincoln Cent  
Struck on Clad Dime Planchet  
PCGS MS 63



1875-CC Liberty Seated Dime  
Struck Off-Center  
ANACS F 12



Philippine 25S  
Struck on U.S. Cent Planchet  
NGC MS 64 RB



1942 Lincoln Cent  
Struck on a 80% Cu 17% Zn Planchet  
NGC XF 40



1945-S War Time Nickel  
Struck on a Foreign Planchet  
NGC AU 55



1888 Liberty Nickel  
Struck on a Foreign Planchet  
ANACS AU 50



1979-D SBA Dollar  
Reverse Clad Layer Missing  
PCGS MS 65



1964 Kennedy Half Dollar  
Struck on a Silver Quarter Planchet  
PCGS MS 63



1898 Indian Cent Double Struck  
2nd Strike 85% Off-Center  
NGC MS 66 Brown



1916-D Buffalo Nickel  
Struck Off-Center  
ANACS MS 64



Lincoln Cent  
Struck on Bow-Tie Dime Scrap  
PCGS MS 65



Wheat Ear Cent  
Struck Fragment  
PCGS MS 65 Red



# Frequently Asked Questions

---

## What are broadstrikes?



A broadstrike error occurs when a coin is struck without the collar to form the rim and edge that is part of the shape of the coin. Coins can be broadstruck on either type one or type two planchets. When a coin is broadstruck the blank being fed into the collar will spread and distort outward as it is being struck because the collar isn't in the correct position to retain it.

# Frequently Asked Questions

---

## What are fold-over strikes?



A fold-over coin is one of the most dramatic types of errors. It occurs when the blank is standing vertically between the dies. During the strike, the force is so great that it bends and folds the blank. These fold-overs can be on-center or off-center, and come in many different shapes. There are a few fold-overs with multiple errors, either with an additional strike or fold-over. Denominations above quarters are very scarce.

## Upcoming Coin Shows



Visit Mike Byers at his table.

Jan. 12-16	FUN Show
Feb. 23-26	Long Beach Coin & Collectible Expo
March 4-6	Las Vegas
March 31-April 3	Santa Clara Coin Expo
April 8-10	ANA's National Money Show
May 5-8	Central States
June 1-4	Long Beach Coin & Collectible Expo
July 21-23	Santa Clara Coin Expo
July 26-31	ANA World's Fair of Money
Sept. 21-24	Long Beach Coin & Collectible Expo
Oct. 27-29	Las Vegas Coin Expo
Nov. 16-19	Santa Clara Coin Expo

## Karl Stephens

ANA LM 3112

**Dealer in World Coins,  
Patterns & Mint Errors**

P.O. Box 3038, Fallbrook, CA 92088  
760-731-6138 • FAX: 760-731-9132  
www.karlstephensinc.com

## MINTERRORNEWS MAGAZINE

### Coming in Issue 10

### Spectacular Double Struck Clark Gruber \$20 Gold Piece



## Wanted To Buy: Buffalo Nickel Errors

Large laminations, straight clips, curved clips, off centers, broadstrikes or cuds on any of the following dates: 1925-D, 1926, 1926-D, 1927-S, 1928-D, 1935-D, 1937-S.

### Also:

Off centers	1930, 1931-S, 1938-D
Off centers	55% & 70%
Off centers	55% to 75% at 9:00
Misaligned die	10% or more
Reverse cuds	K-3, K-8, K-10
Curved Clips	Obverse - K-1, K-7, K-12

*Please describe & price.*

**Bob Entlich  
c/o Stacks  
123 W. 57th St.  
New York, NY 10019**

# BYERS NUMISMATIC CORP

MIKEBYERS.COM



## The Largest Dealer of the World's Rarest Mint Errors™

U.S. ERRORS • WORLD & ANCIENT ERRORS • DIE TRIALS • CURRENCY ERRORS



We handle the world's finest Major Mint Errors and Numismatic Rarities. Our premier MULTI-MILLION DOLLAR INVENTORY includes only the best, museum quality, world class and exotic U.S. and World Major Mint Errors and Die Trials. Many of our purchases are immediately sold to our customers, and don't even reach our website to be sold, or eBay to be auctioned. Send us your want list, we may have what you're looking for.

# MIKE BYERS

P.O. Box 5090, San Clemente, CA USA 92674

Office: 949-276-7072 • Fax: 949-276-7073

Fed Ex Address only: 1001 Avenida Pico #C 612, San Clemente, CA 92673

E-Mail: [mike@mikebyers.com](mailto:mike@mikebyers.com) • Website Design: [sam@mikebyers.com](mailto:sam@mikebyers.com)

Mike Byers, Professional Numismatist since 1978

Byers Numismatic Corp. A California Corporation Since 1980

Mike Byers is a consultant to ANACS for Mint Errors

